

WAAS CH <b>77717</b> <b>W35A</b>	APP CRS <b>352°</b>	Rwy Idg TDZE Apt Elev	<b>4000</b> <b>1035</b> <b>1040</b>
--	------------------------	-----------------------------	---

# RNAV (GPS) RWY 35

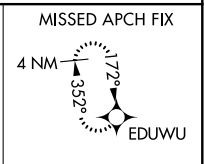
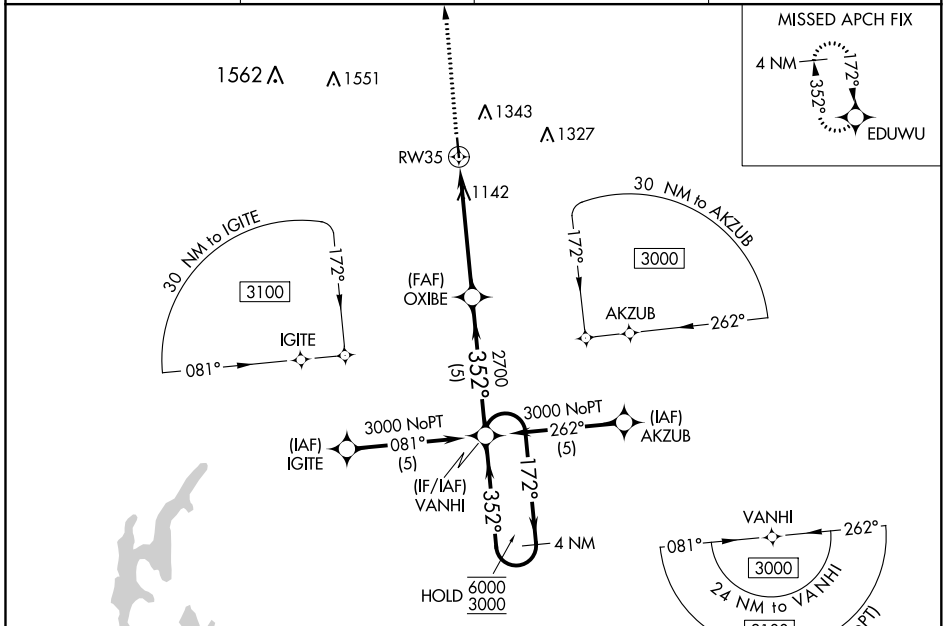
CAMERON MEML (E/ZZ)

RNP APCH.

▼ Rwy 35 helicopter visibility reduction below ¾ SM NA. For uncompensated Baro-VNAV systems, LNAV/VNAV NA below -17°C or above 54°C.

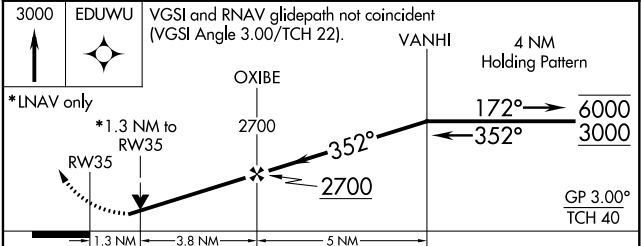
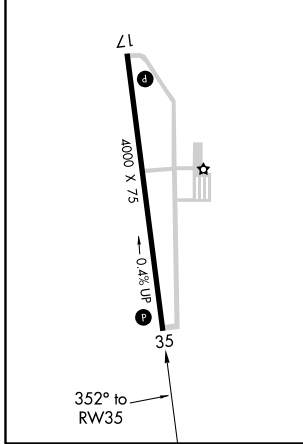
MISSED APPROACH: Climb to 3000 direct EDUWU and hold.

AWOS-3 <b>121.05</b>	KANSAS CITY APP CON <b>118.4 307.35</b>	CLNC DEL <b>121.6</b>	UNICOM <b>122.8</b> (CTAF) <b>1</b>
-------------------------	--	--------------------------	--



ELEV 1040	TDZE 1035
-----------	-----------

MIRL Rwy 17-35 **1**  
REIL Rwys 17 and 35 **1**



CATEGORY	A	B	C	D
LPV DA	1285-¾	250 (300-¾)		NA
LNAV/VNAV DA	1310-⅞	275 (300-⅞)		NA
LNAV MDA	1460-1	425 (500-1)		NA
CIRCLING	1660-1	620 (700-1)		NA

NC-3, 07 OCT 2021 to 04 NOV 2021

NC-3, 07 OCT 2021 to 04 NOV 2021