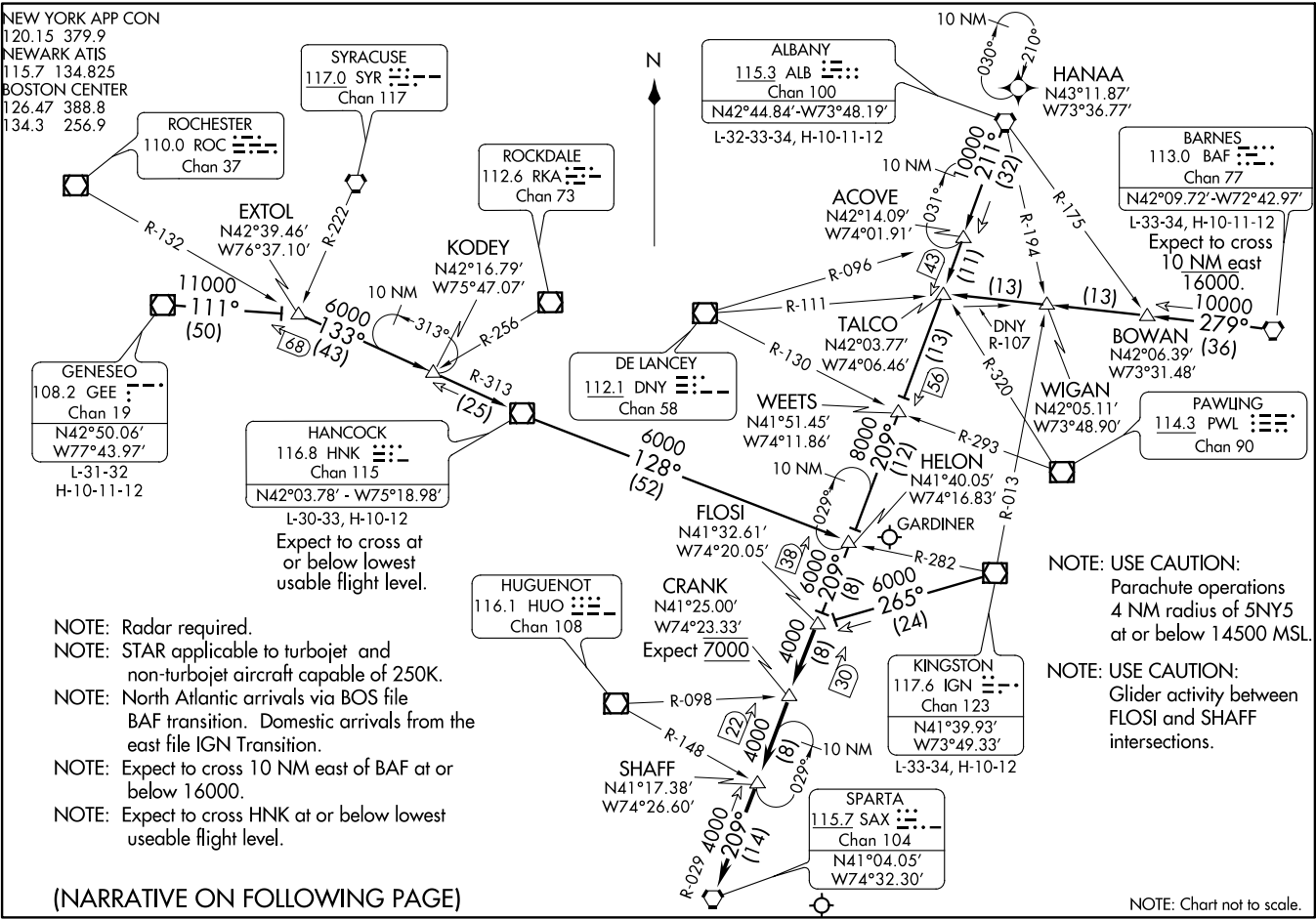


SHAFF SEVEN ARRIVAL
 (SHAFF SHAFF7) 31MAY12



(SHAFF SHAFF7) 17117
 SHAFF SEVEN ARRIVAL

AL-285 (FAA)

NEWARK LIBERTY INTL (E/W/R)
 NEWARK, NEW JERSEY

NEW YORK APP CON
 120.15 379.9
 NEWARK ATIS
 115.7 134.825
 BOSTON CENTER
 126.47 388.8
 134.3 256.9

ROCHESTER
 110.0 ROC
 Chan 37

SYRACUSE
 117.0 SYR
 Chan 117

ROCKDALE
 112.6 RKA
 Chan 73

ALBANY
 115.3 ALB
 Chan 100
 N42°44.84'-W73°48.19'
 L-32-33-34, H-10-11-12

HANAA
 N43°11.87'
 W73°36.77'

BARNES
 113.0 BAF
 Chan 77
 N42°09.72'-W72°42.97'
 L-33-34, H-10-11-12
 Expect to cross
 10 NM east
 16000.

EXTOL
 N42°39.46'
 W76°37.10'

KODEY
 N42°16.79'
 W75°47.07'

ACOVE
 N42°14.09'
 W74°01.91'

TALCO
 N42°03.77'
 W74°06.46'

BOWAN
 N42°06.39'
 W73°31.48'

GENESEO
 108.2 GEE
 Chan 19
 N42°50.06'
 W77°43.97'
 L-31-32
 H-10-11-12

HANCOCK
 116.8 HNK
 Chan 115
 N42°03.78' - W75°18.98'
 L-30-33, H-10-12
 Expect to cross at
 or below lowest
 usable flight level.

DE LANCEY
 112.1 DNY
 Chan 58

WEETS
 N41°51.45'
 W74°11.86'

HELON
 N41°40.05'
 W74°16.83'

PAWLING
 114.3 PWL
 Chan 90

NOTE: USE CAUTION:
 Parachute operations
 4 NM radius of 5NY5
 at or below 14500 MSL.

NOTE: USE CAUTION:
 Glider activity between
 FLOSI and SHAFF
 intersections.

- NOTE: Radar required.
- NOTE: STAR applicable to turbojet and non-turbojet aircraft capable of 250K.
- NOTE: North Atlantic arrivals via BOS file BAF transition. Domestic arrivals from the east file IGN Transition.
- NOTE: Expect to cross 10 NM east of BAF at or below 16000.
- NOTE: Expect to cross HNK at or below lowest useable flight level.

(NARRATIVE ON FOLLOWING PAGE)

NOTE: Chart not to scale.

NEWARK NEW JERSEY
 NEWARK LIBERTY INTL (E/W/R)

ARRIVAL ROUTE DESCRIPTION

ALBANY TRANSITION (ALB.SHAFF7): From over ALB VORTAC on ALB R-211 to WEETS INT, then on SAX R-029 to FLOSI INT. Thence. . . .

BARNES TRANSITION (BAF.SHAFF7): From over BAF VORTAC on BAF R-279 to TALCO INT, then on ALB R-211 to WEETS INT, then on SAX R-029 to FLOSI INT. Thence. . . .

GENESEO TRANSITION (GEE.SHAFF7): From over GEE VOR/DME on GEE R-111 to EXTOL INT, then on HNK R-313 to HNK VOR/DME, then on HNK R-128 to HELON INT, then on SAX R-029 to FLOSI INT. Thence. . . .

HANCOCK TRANSITION (HNK.SHAFF7): From over HNK VOR/DME on HNK R-128 to HELON INT, then on SAX R-029 to FLOSI INT. Thence. . . .

KINGSTON TRANSITION (IGN.SHAFF7): From over IGN VOR/DME on IGN R-265 to FLOSI INT. Thence. . . .

. . . . From over FLOSI INT on SAX R-029 to CRANK INT, then to SHAFF INT, then to SAX VORTAC. Expect radar vectors to final approach course.

NE-2, 29 MAR 2018 to 26 APR 2018

NE-2, 29 MAR 2018 to 26 APR 2018