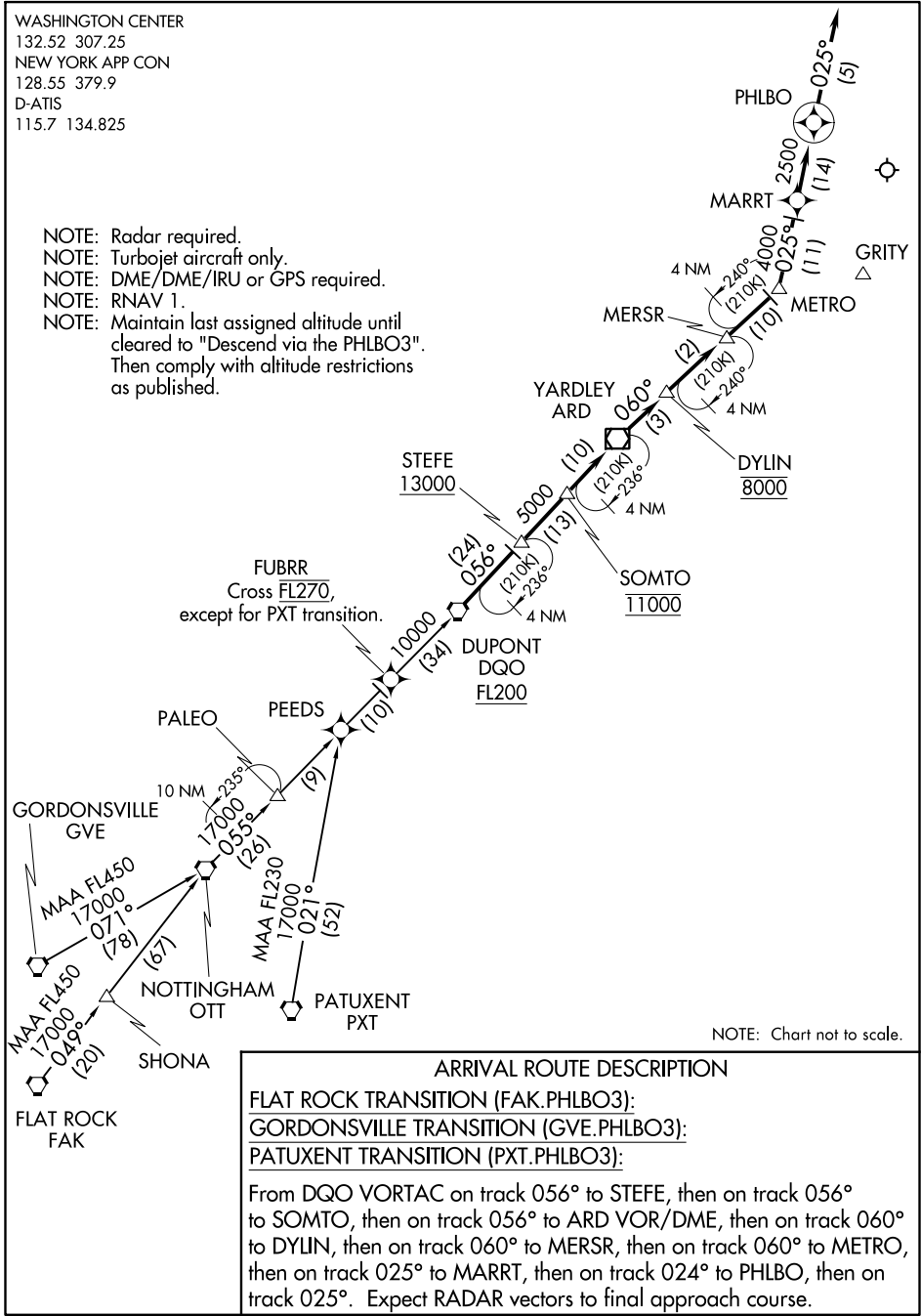


PHLBO THREE ARRIVAL (RNAV)

WASHINGTON CENTER
132.52 307.25
NEW YORK APP CON
128.55 379.9
D-ATIS
115.7 134.825

- NOTE: Radar required.
- NOTE: Turbojet aircraft only.
- NOTE: DME/DME/IRU or GPS required.
- NOTE: RNAV 1.
- NOTE: Maintain last assigned altitude until cleared to "Descend via the PHLBO3". Then comply with altitude restrictions as published.



NE-2, 09 SEP 2021 to 07 OCT 2021

NE-2, 09 SEP 2021 to 07 OCT 2021

NOTE: Chart not to scale.

ARRIVAL ROUTE DESCRIPTION

- FLAT ROCK TRANSITION (FAK.PHLBO3):
- GORDONSVILLE TRANSITION (GVE.PHLBO3):
- PATUXENT TRANSITION (PXT.PHLBO3):

From DQO VORTAC on track 056° to STEFE, then on track 056° to SOMTO, then on track 056° to ARD VOR/DME, then on track 060° to DYLIN, then on track 060° to MERSR, then on track 060° to METRO, then on track 025° to MARRT, then on track 024° to PHLBO, then on track 025°. Expect RADAR vectors to final approach course.

PHLBO THREE ARRIVAL (RNAV)