

WAAS CH 40302 W35A	APP CRS 355°	Rwy Idg TDZE Apt Elev	4488 70 70
--	------------------------	-----------------------------	---------------------------------------

RNAV (GPS) RWY 35

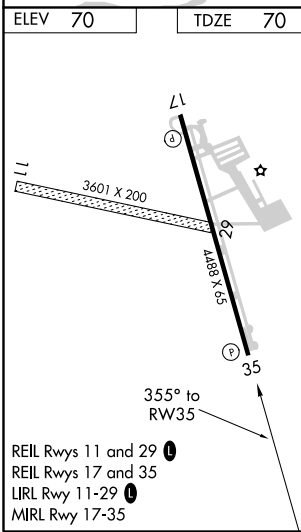
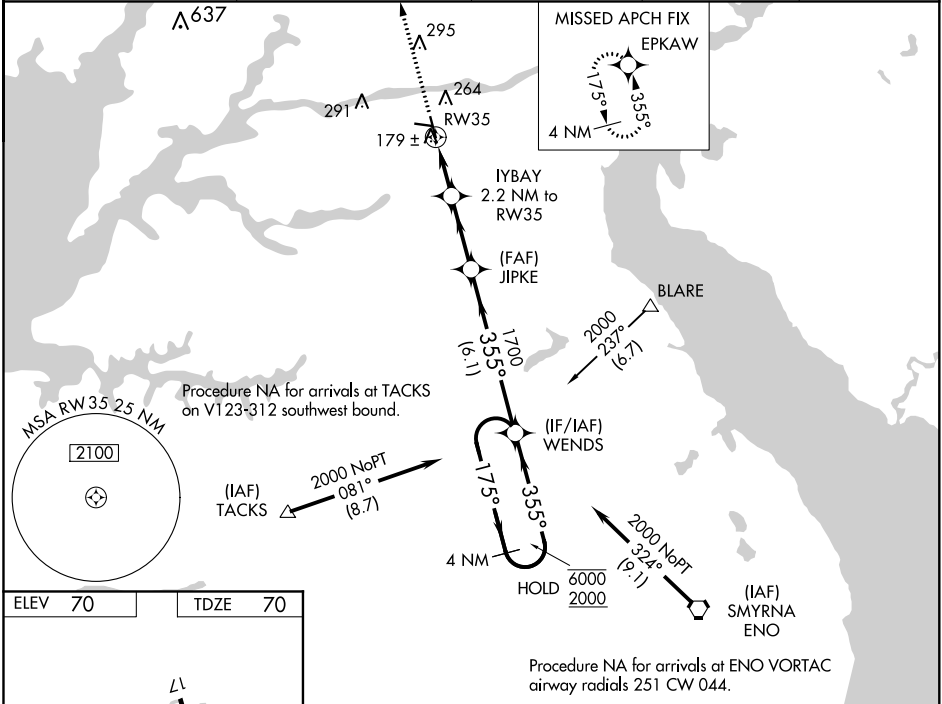
SUMMIT (EVY)

RNP APCH.

NA Baro-VNAV and VDP NA when using Wilmington altimeter setting. Rwy 35 helicopter visibility reduction below 3/4 SM NA. For uncompensated Baro-VNAV systems, LNAV/VNAV NA below -15°C or above 47°C. When local altimeter setting not received, use Wilmington altimeter setting and increase all DA 27 feet, all MDA 40 feet and LNAV Cat C visibility 1/8 SM.

MISSED APPROACH: Climb to 2000 direct EPKAW and hold.

AWOS-3 132.325	PHILADELPHIA APP CON 118.35 323.1	CLNC DEL 125.3	UNICOM 122.725 (CTAF)	123.5 0
--------------------------	---	--------------------------	---------------------------------	-----------------------



2000	EPKAW	VGSI and RNAV glidepath not coincident (VGSI Angle 3.00/TCH 41).		4 NM Holding Pattern
↑	✧	IYBAY 2.2 NM to RW35	JIPKE 1700	WENDS 175° → 6000 ← 355° 2000
* LNAV only.		* 1.3 NM to RW35	* 820	GP 3.00° TCH 50
RW35		1.3 NM	0.9 NM	2.7 NM
CATEGORY		A	B	C
LPV DA		320-1 250 (300-1)		
LNAV/VNAV DA		480-1½ 410 (500-1½)		
LNAV MDA		440-1 370 (400-1)		440-1¼ 370 (400-1¼)

NE-3, 20 MAY 2021 to 17 JUN 2021

NE-3, 20 MAY 2021 to 17 JUN 2021