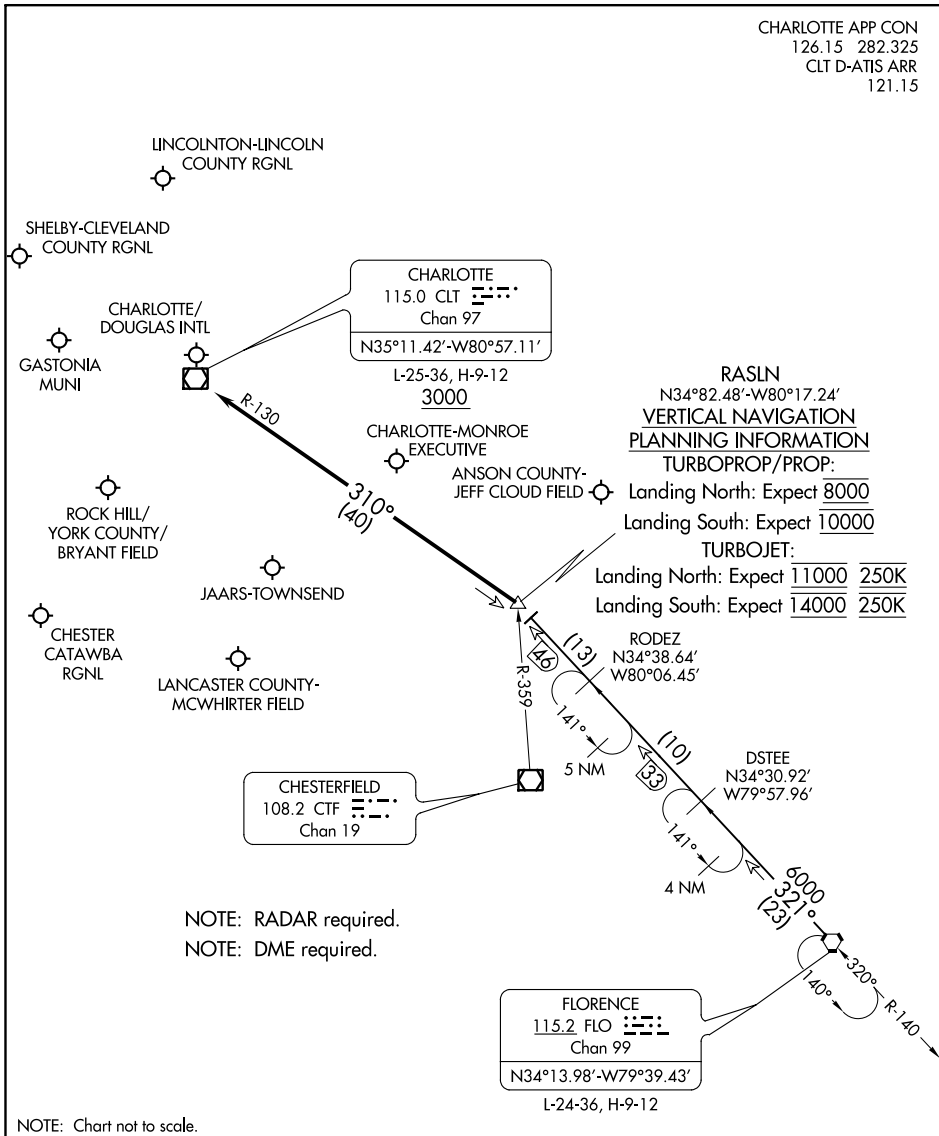


CHARLOTTE APP CON
 126.15 282.325
 CLT D-ATIS ARR
 121.15



SE-2, 07 OCT 2021 to 04 NOV 2021

SE-2, 07 OCT 2021 to 04 NOV 2021

NOTE: RADAR required.
 NOTE: DME required.

ARRIVAL ROUTE DESCRIPTION

FLORENCE TRANSITION (FLO.RASLN3): From over FLO VORTAC on FLO R-321 to RASLN INT. Thence

. . . . from RASLN on CLT R-130 to cross CLT VOR/DME at or above 3000. Expect RADAR vectors to destination airport or final approach course prior to CLT VOR/DME.