

(KWEEN4.KWEEN) 19003

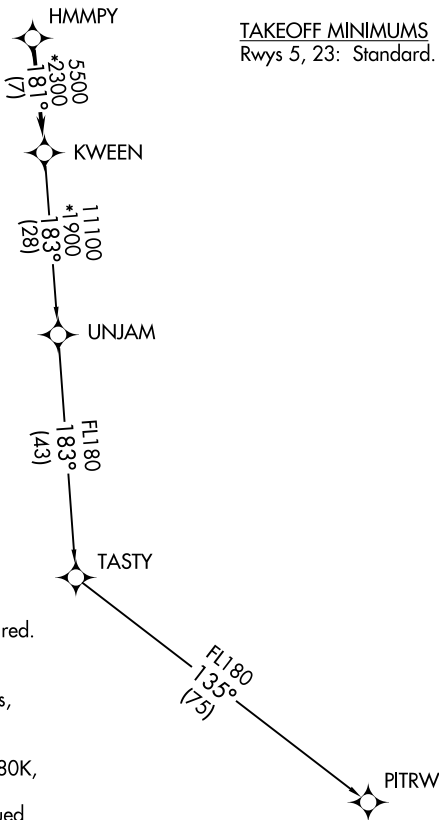
AL-5726 (FAA)

CHARLOTTE-MONROE EXECUTIVE (EQY)
MONROE, NORTH CAROLINA

KWEEN FOUR DEPARTURE (RNAV)

ASOS
135.775
CLNC DEL
132.55
UNICOM (CTAF)
122.7
CHARLOTTE DEP CON
120.05 307.8

**TOP ALTITUDE:
3000**



TAKEOFF MINIMUMS
Rwys 5, 23: Standard.

- NOTE: For turbojets only.
- NOTE: DME/DME/IRU or GPS required.
- NOTE: RNAV 1.
- NOTE: RADAR required.
- NOTE: If unable to accept climb rates, advise ATC on initial contact.
- NOTE: Upon reaching 10000 MSL, accelerate to and maintain 280K, if unable advise ATC.
- NOTE: Transponder code will be issued via PDC or Charlotte CLNC DEL.

NOTE: Chart not to scale.

DEPARTURE ROUTE DESCRIPTION

Climb on heading assigned by ATC, expect RADAR vectors to HMMPY, then on track 181° to KWEEN, then on assigned transition, maintain 3000, expect filed altitude within 10 minutes after departure.

PITRW TRANSITION (KWEEN4.PITRW)
UNJAM TRANSITION (KWEEN4.UNJAM)

KWEEN FOUR DEPARTURE (RNAV)
(KWEEN4.KWEEN) 03JAN19

MONROE, NORTH CAROLINA
CHARLOTTE-MONROE EXECUTIVE (EQY)

SE-2, 02 DEC 2021 to 30 DEC 2021

SE-2, 02 DEC 2021 to 30 DEC 2021