

LOC/DME I-EKY 111.75 Chan 54 (Y)	APP CRS 053°	Rwy Idg TDZE Apt Elev	6007 700 700
--	------------------------	-----------------------------	---

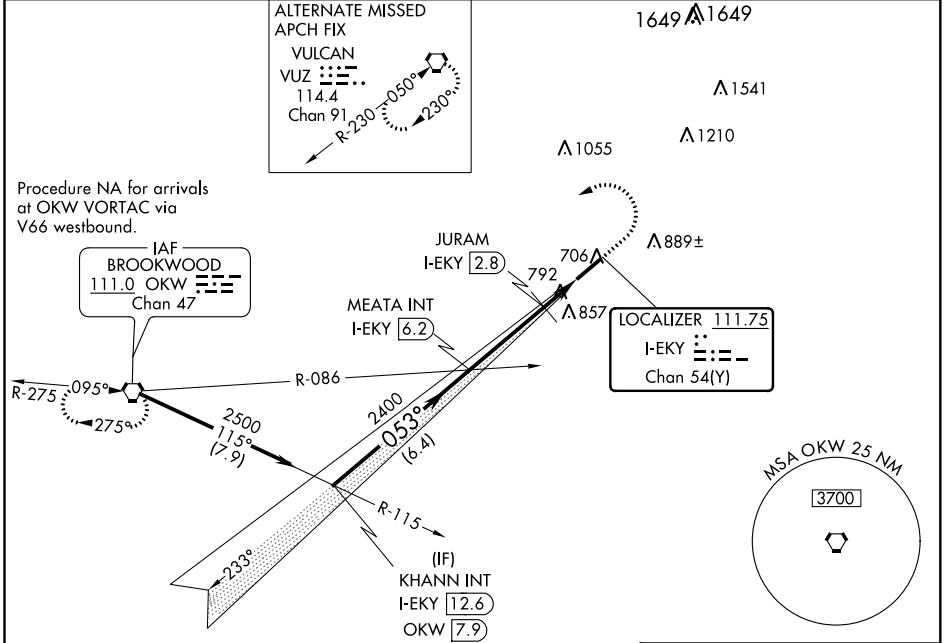
ILS or LOC RWY 5

BESSEMER (EKY)

NA When local altimeter setting not received, use Alabaster altimeter setting and increase all DA 41 feet, increase all MDA 60 feet and increase S-LOC 5 Cat C and D visibility ¼ mile. Increase JURAM Fix S-LOC Cat C and D visibility ¼ mile. VDP NA with Alabaster altimeter setting.

MISSED APPROACH: Climb to 1200 then climbing left turn to 3000 direct OKW VORTAC and hold.

AWOS-3PT 118.825	BIRMINGHAM APP CON 124.9 351.85	CLNC DEL 123.75	UNICOM 123.0 (CTAF) 0
----------------------------	---	---------------------------	--



Procedure Turn NA

KHANN INT I-EKY [12.6] # 1260 when using Alabaster altimeter setting.

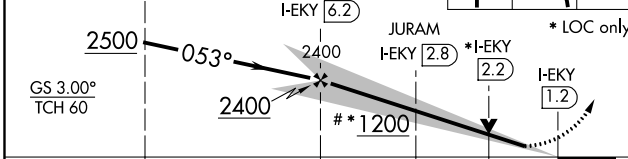
MEATA INT I-EKY [6.2]

JURAM I-EKY [2.8]

OKW 1200 3000

OKW

ELEV 700 TDZE 700



CATEGORY	A	B	C	D
S-ILS 5	900-¾		200 (200-¾)	
S-LOC 5	1200-1	500 (500-1)	1200-1¼ 500 (500-1¼)	1200-1½ 500 (500-1½)
CIRCLING	1200-1	500 (500-1)	1220-1½ 520 (600-1½)	1260-2 560 (600-2)
JURAM FIX MINIMUMS				
S-LOC 5	1100-1		400 (400-1)	1100-1¼ 400 (400-1¼)
CIRCLING	1200-1	500 (500-1)	1220-1½ 520 (600-1½)	1260-2 560 (600-2)

