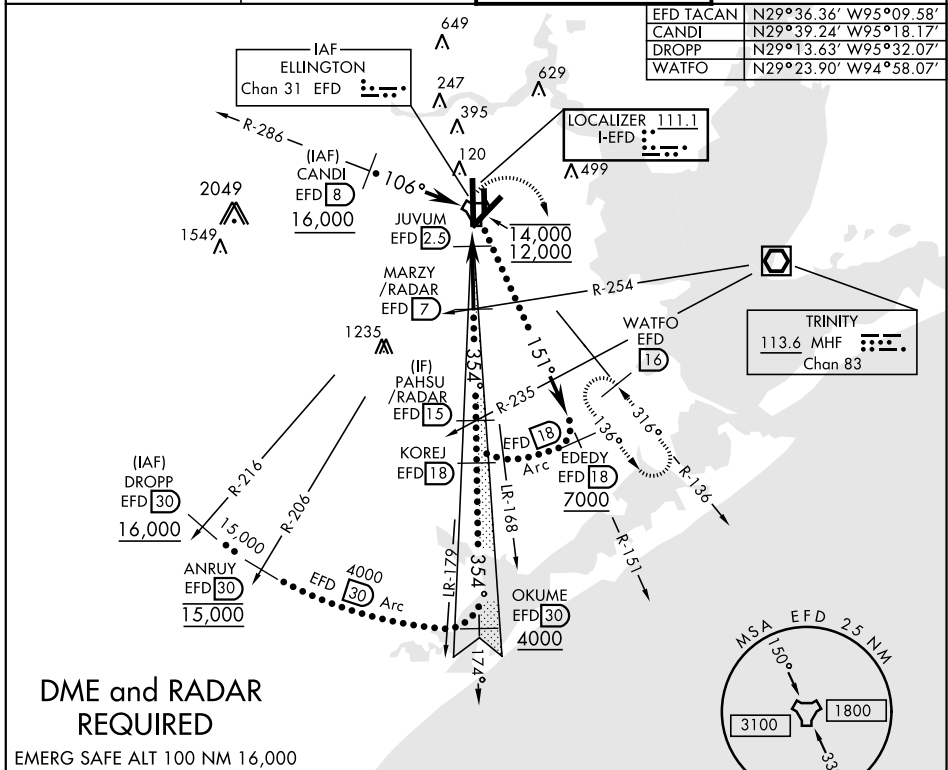


HOUSTON, TEXAS

# HI-ILS or LOC/DME RWY 35L

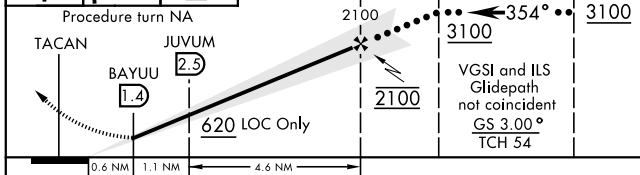
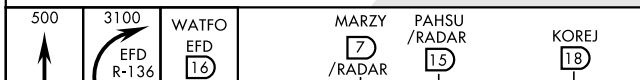
LOC I-EFD <b>111.1</b>	APCH CRS <b>354°</b>	Rwy Idg THRE <b>9001</b> Arpt Elev <b>33</b>	JAL-197 [USAF]	HOUSTON/ELLINGTON (KEFD)
* When ALS inop, increase CAT CDE RVR to 60, vis to 1/8 mile. ** Circling not authorized W of rwy 17L-35R			MALSF 	MISSED APPROACH: Climb to 500 then climbing right turn to 3100 via EFD R-136 to WATFO INT/EFD 16 DME and hold.

ATIS <b>135.575 269.9</b>	HOUSTON APP CON <b>134.45 284.0</b>	ELLINGTON TOWER <b>126.05 253.5</b>	GND CON <b>121.6 275.8</b>
------------------------------	--	--	-------------------------------



## DME and RADAR REQUIRED

EMERG SAFE ALT 100 NM 16,000



CATEGORY	C	D	E
S-ILS 35L	228/40	200	(200-3/4)
S-LOC 35L*	440/50	412	(500-1)
CIRCLING**	500-1 1/2 467 (500-1 1/2)	600-2 567 (600-2)	660-2 1/4 627 (700-2 1/4)

ELEV 33	THRE 28
---------	---------

HOUSTON, TEXAS

29°37'N-95°10'W

HOUSTON/ELLINGTON (KEFD)

Amtd 4 10JAN13

# HI-ILS or LOC/DME RWY 35L

SC-5, 04 JAN 2018 to 01 FEB 2018

SC-5, 04 JAN 2018 to 01 FEB 2018