

VOR/DME DVL	APP CRS	Rwy Idg	<b>6401</b>
<b>111.0</b>	<b>138°</b>	TDZE	<b>1470</b>
Chan <b>47</b>		Apt Elev	<b>1470</b>

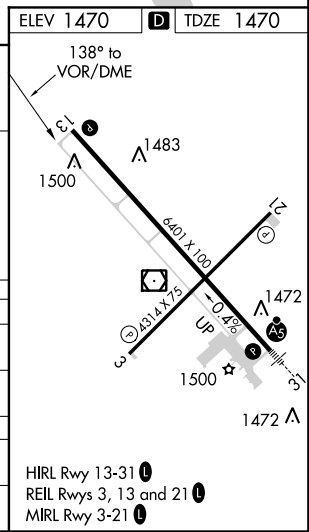
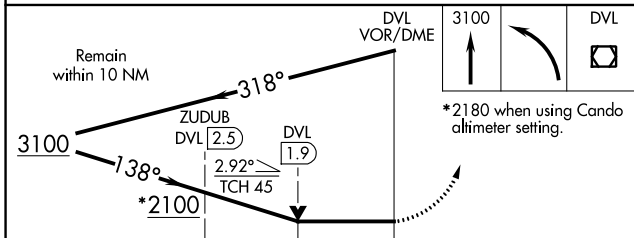
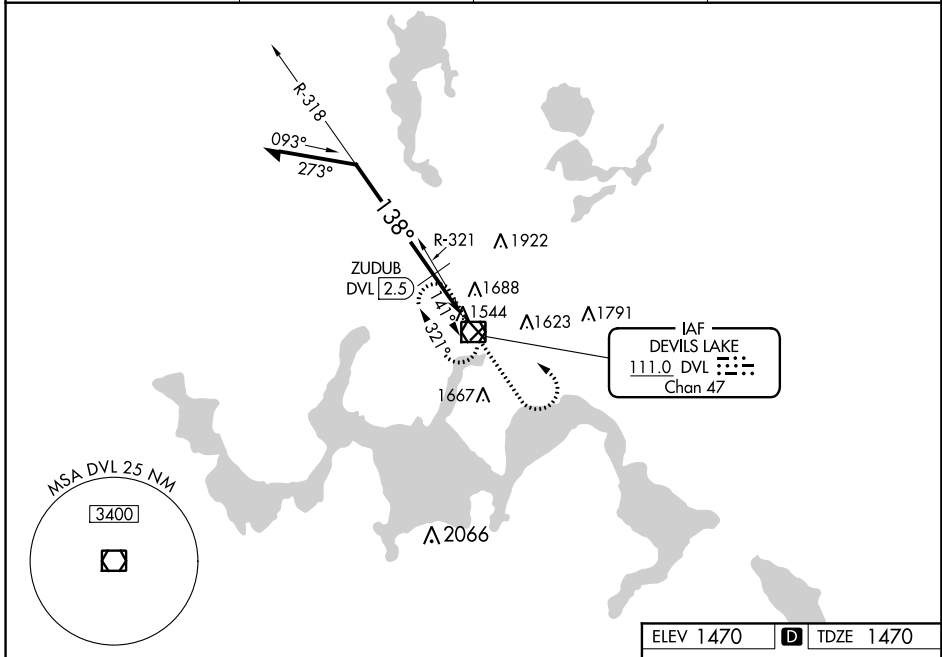
# VOR RWY 13

DEVILS LAKE RGNL (DVL)

**⚠** VDP NA with Cando altimeter setting. When local altimeter setting not received, use Cando altimeter setting and increase all MDA 80 feet, and increase S-13 and Circling Cats C and D visibility  $\frac{1}{4}$  mile, increase ZUDUB fix minimums S-13 and Circling Cats C and D visibility  $\frac{1}{4}$  mile.

**MISSED APPROACH:** Climb to 3100 then left turn direct DVL VOR/DME and hold.

AWOS-3PT <b>125.875</b>	MINNEAPOLIS CENTER <b>124.2 270.3</b>	GRAND FORKS RADIO <b>122.3</b>	UNICOM <b>122.8 (CTAF)</b>
----------------------------	--	-----------------------------------	-------------------------------



CATEGORY	A	B	C	D
S-13	2100-1	630 (700-1)	2100-1 $\frac{3}{4}$	630 (700-1 $\frac{3}{4}$ )
<b>C</b> CIRCLING	2100-1	630 (700-1)	2240-2 $\frac{1}{4}$ 770 (800-2 $\frac{1}{4}$ )	2240-2 $\frac{1}{2}$ 770 (800-2 $\frac{1}{2}$ )
ZUDUB FIX MINIMUMS (DME REQUIRED)				
S-13	1940-1	470 (500-1)	1940-1 $\frac{3}{8}$	470 (500-1 $\frac{3}{8}$ )
<b>C</b> CIRCLING	2000-1	530 (600-1)	2240-2 $\frac{1}{4}$ 770 (800-2 $\frac{1}{4}$ )	2240-2 $\frac{1}{2}$ 770 (800-2 $\frac{1}{2}$ )

HIRL Rwy 13-31 **⓪**  
REIL Rws 3, 13 and 21 **⓪**  
MIRL Rwy 3-21 **⓪**