

WESTMINSTER, MARYLAND

AL-5533 (FAA)

15232

WAAS CH 82117 W34A	APP CRS 339°	Rwy Idg 5100 TDZE 788 Apt Elev 789
--	------------------------	---

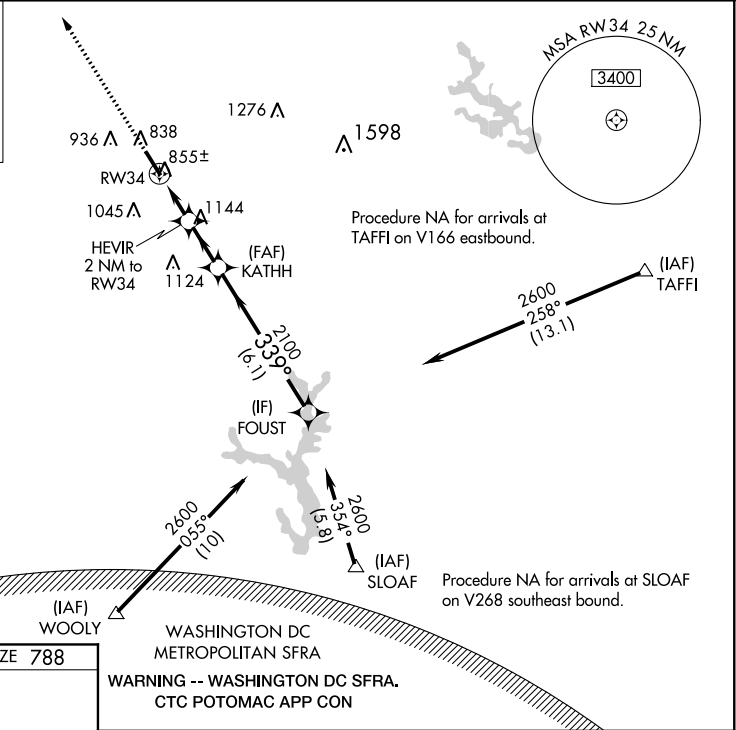
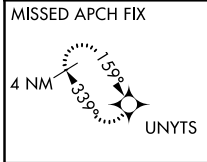
RNAV (GPS) RWY 34

CARROLL COUNTY RGNL/JACK B. POAGE FIELD (DMW)

▼ For uncompensated Baro-VNAV systems, LNAV/VNAV NA below -16°C (4°F) or above 54°C (130°F).
▲ DME/DME RNP-0.3 NA.

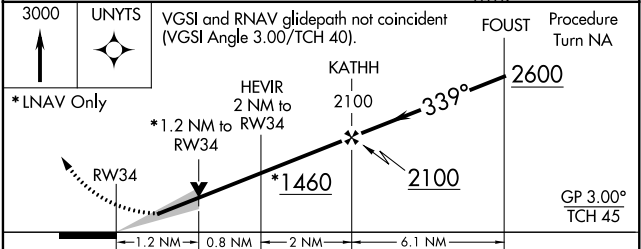
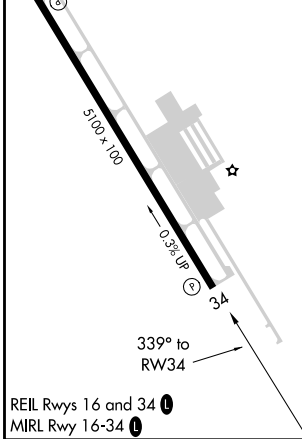
MISSED APPROACH: Climb to 3000 direct UNYTS and hold

AWOS-3 121.25	POTOMAC APP CON 125.525 291.625	GCO 121.725	UNICOM 122.7 (CTAF) 0
-------------------------	---	-----------------------	---------------------------------



ELEV 789	TDZE 788
----------	----------

WASHINGTON DC METROPOLITAN SFRA
WARNING -- WASHINGTON DC SFRA. CTC POTOMAC APP CON



CATEGORY	A	B	C	D
LPV DA	988-1 200 (200-1)			NA
LNAV/VNAV DA	1105-1½ 317 (400-1½)			NA
LNAV MDA	1180-1 392 (400-1)			NA
CIRCLING	1300-1 511 (600-1)		1300-1½ 511 (600-1½)	NA

WESTMINSTER, MARYLAND
 Amdt 1A 02MAY13

CARROLL COUNTY RGNL/JACK B. POAGE FIELD (DMW)
 39°36'N-77°00'W

RNAV (GPS) RWY 34

NE-3, 01 MAR 2018 to 29 MAR 2018

NE-3, 01 MAR 2018 to 29 MAR 2018