

LOC IDHN <b>108.3</b>	APP CRS <b>318°</b>	Rwy Idg TDZE Apt Elev	<b>8496</b> <b>382</b> <b>401</b>
--------------------------	------------------------	-----------------------------	---

# ILS or LOC RWY 32

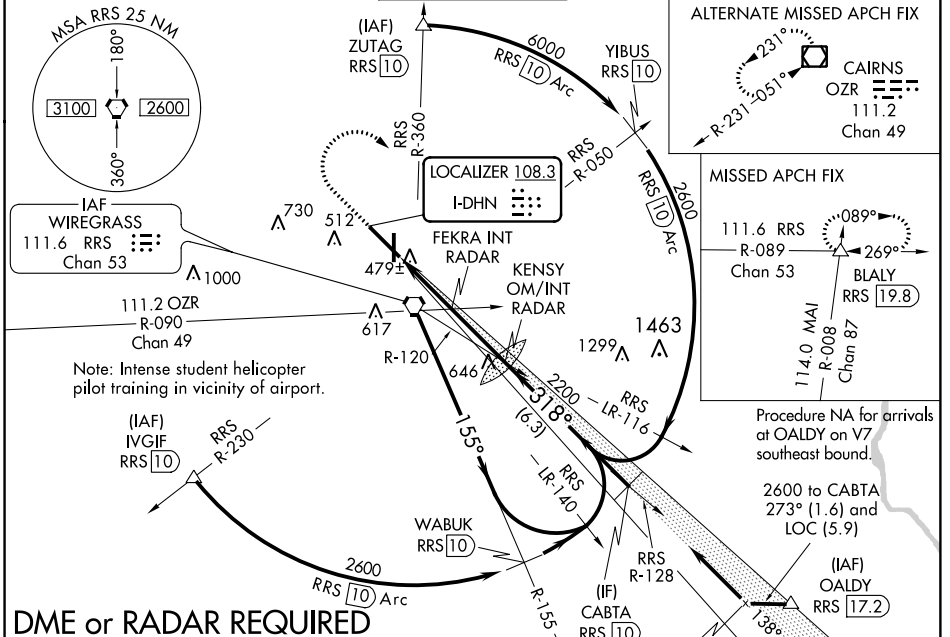
DOTHAN RGNL (DHN)

**⚠** For inoperative MALSR, increase S-LOC 32 Cat C/D visibility to 2½ miles.  
**\*\*** RVR 1800 authorized with use of FD or AP or HUD to DA.

MALSR

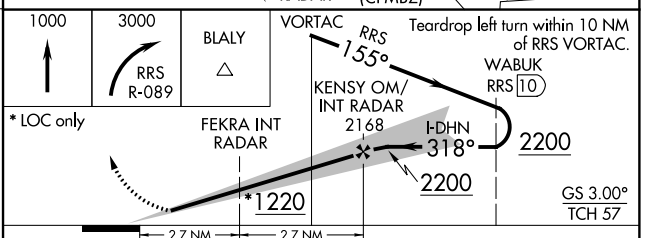
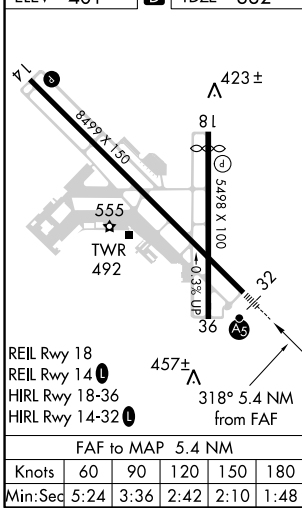
MISSED APPROACH: Climb to 1000 then climbing right turn to 3000 on hdg 130° and RRS VORTAC R-089 to BLALY INT/RRS 19.8 DME and hold.

ATIS <b>135.725</b>	CAIRNS APP CON* <b>125.4 327.125</b>	DOTHAN TOWER ★ <b>118.4 (CTAF) 0 257.6</b>	GND CON <b>121.7 348.6</b>	UNICOM <b>122.95</b>
------------------------	---	---	-------------------------------	-------------------------



**DME or RADAR REQUIRED**

ELEV 401	<b>D</b>	TDZE 382
----------	----------	----------



CATEGORY	A	B	C	D
S-ILS 32 **	582/24 200 (200-½)			
S-LOC 32	1220/24 838 (900-½)	1220/40 838 (900-¾)	1220-1⅞ 838 (900-1⅞)	838 (900-1⅞)
CIRCLING	1220-1¼	819 (900-¼)	1220-2½ 819 (900-2½)	1220-2¾ 819 (900-2¾)
FEKRA FIX MINIMUMS (DUAL VOR RECEIVERS OR RADAR REQUIRED)				
S-LOC 32	820/24	438 (500-½)	820/40	438 (500-¾)
CIRCLING	860-1	459 (500-1)	860-1½ 459 (500-1½)	960-2 559 (600-2)

SE-4, 26 APR 2018 to 24 MAY 2018

SE-4, 26 APR 2018 to 24 MAY 2018