

# RNAV (RNP) Z RWY 31L

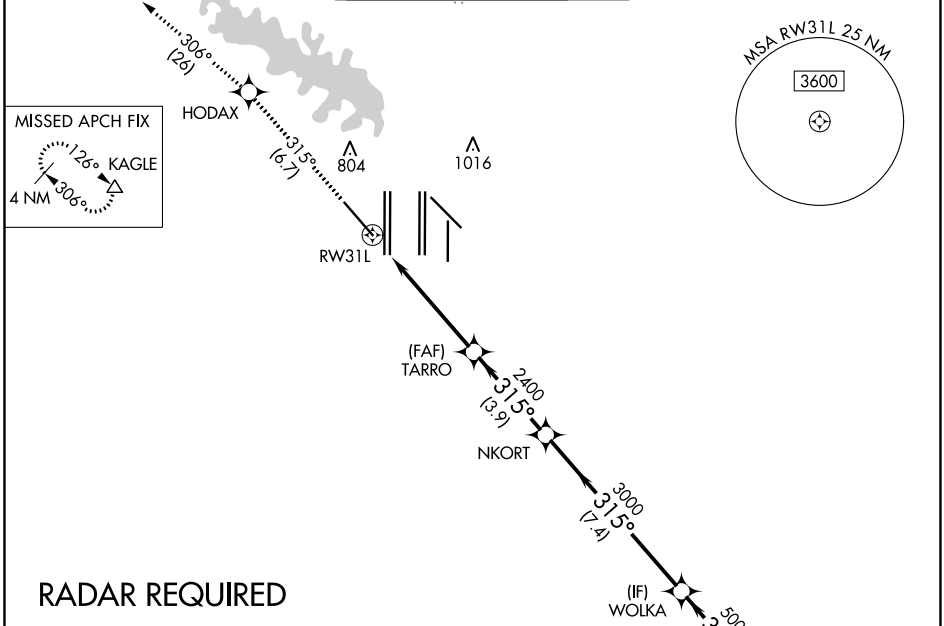
DALLAS-FORT WORTH INTL (DFW)

APP CRS <b>315°</b>	Rwy Idg <b>9301</b> TDZE <b>581</b> Apt Elev <b>607</b>
------------------------	---------------------------------------------------------------

**▼** For uncompensated Baro-VNAV systems, procedure NA below -4°C (25°F) or above 54°C (130°F). Simultaneous approach authorized with Rwy 31R. GPS Required. Use of FD or AP providing RNAV track guidance required during simultaneous operations.

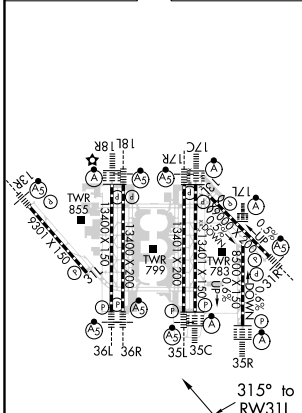
**MISSED APPROACH:** Climb to 3000 on track 315° to HODAX and on track 306° to KAGLE and hold.

D-ATIS ARR <b>123.775</b> DEP <b>135.925</b>	REGIONAL APP CON <b>133.15 118.1</b>	DFW TOWER <b>126.55 127.5 EAST</b> <b>124.15 134.9 WEST</b>	GND CON <b>121.65 121.8 EAST</b> <b>121.85 WEST</b>	CLNC DEL <b>128.25</b>	CPDLC
----------------------------------------------------	-----------------------------------------	-------------------------------------------------------------------	-----------------------------------------------------------	---------------------------	-------



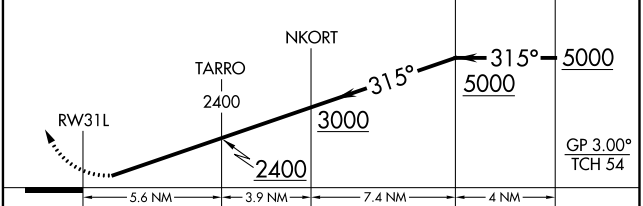
## RADAR REQUIRED

ELEV <b>607</b>	<b>D</b>	TDZE <b>581</b>
-----------------	----------	-----------------



HIRL all Rwy's  
REIL Rwy's 13L and 31L  
TDZ/CL all Rwy's except 13L and 31L

3000	HODAX	KAGLE	VGSI and RNAV glidepath not coincident (VGSI Angle 3.13/TCH 72).
fr 315°	tr 306°		



CATEGORY	A	B	C	D
RNP	0.30 DA	951/60	370 (400-1¼)	

## AUTHORIZATION REQUIRED

SC-2, 20 JUN 2019 to 18 JUL 2019

SC-2, 20 JUN 2019 to 18 JUL 2019