

WAAS CH 87005 W36A	APP CRS 356°	Rwy Idg 13400 TDZE 581 Apt Elev 607
--	------------------------	--

RNAV (GPS) RWY 36R

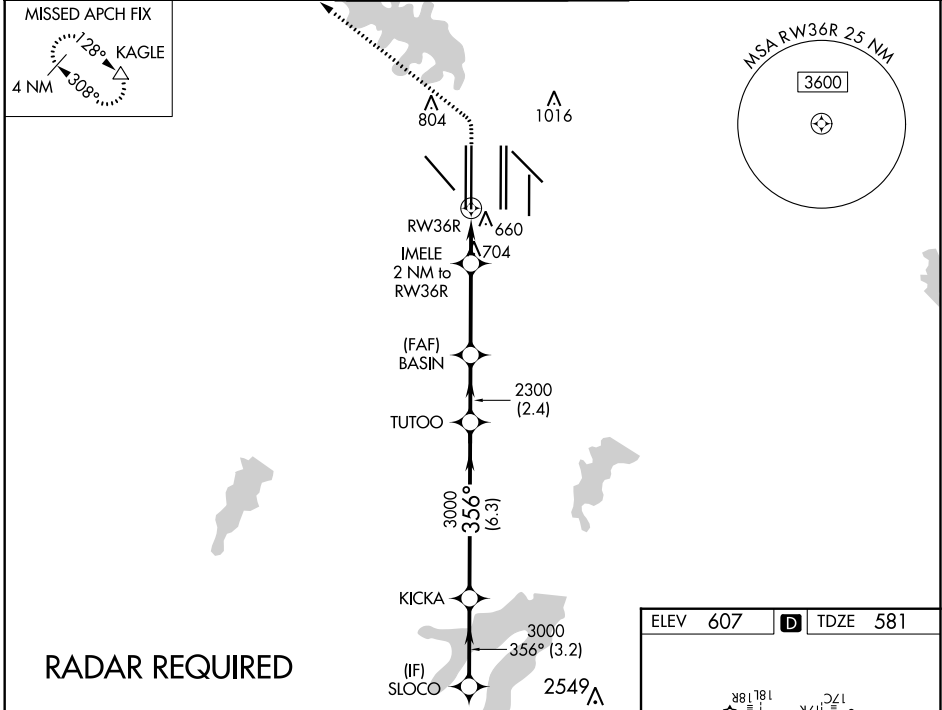
DALLAS-FORT WORTH INTL (DFW)

▽ For uncompensated Baro-VNAV systems, LNAV/VNAV NA below -4°C (25°F) or above 54°C (130°F). For inop MALS, increase LNAV Cats C/D visibility to RVR 5500. Simultaneous approach authorized with Rwy 35L/C/R. DME/DME RNP-0.3 NA. LNAV procedure NA during simultaneous operations. Use of FD or AP providing RNAV track guidance required during simultaneous operations.

MALS

MISSED APPROACH: Climb to 1100 then climbing left turn to 3000 direct KAGLE and hold.

D-ATIS ARR 123.775 DEP 135.925	REGIONAL APP CON 118.425	DFW TOWER 126.55 127.5 EAST 124.15 134.9 WEST	GND CON 121.65 121.8 EAST 121.85 WEST	CLNC DEL 128.25	CPDLC
--	------------------------------------	---	---	---------------------------	-------



VGSI and RNAV glidepath not coincident (VGSI Angle 3.00/TCH 66).

SLOCO	KICKA	TUTOO	BASIN	IMELE 2 NM to RW36R	RW36R
4000	3000	3000	2300	*1260	
GP 3.00° TCH 50	3.2 NM	6.3 NM	2.4 NM	3.3 NM	1 NM
CATEGORY	A	B	C	D	
LPV DA	781/18		200 (200-½)		
LNAV/VNAV DA	941/40		360 (400-¾)		
LNAV MDA	960/24		379 (400-½)		
			960/35		379 (400-⅝)

*LNAV only.

*1 NM to RW36R

1100

3000

KAGLE

ELEV 607	D	TDZE 581
----------	----------	----------

HIRL all Rwys
REIL Rwys 13L and 31L
TDZ/CL all Rwys except 13L and 31L

SC-2, 30 JAN 2020 to 27 FEB 2020

SC-2, 30 JAN 2020 to 27 FEB 2020