

LOC/DME I-FJN <b>110.55</b> Chan <b>42 (Y)</b>	APP CRS <b>356°</b>	Rwy 36R Idg <b>13400</b> TDZE <b>581</b> Apt Elev <b>607</b>	Rwy 36L Idg <b>13400</b> TDZE <b>588</b> Apt Elev <b>607</b>
--	------------------------	--	--

# ILS or LOC RWY 36R

DALLAS-FORT WORTH INTL (DFW)

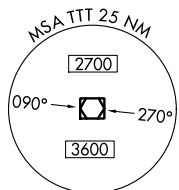
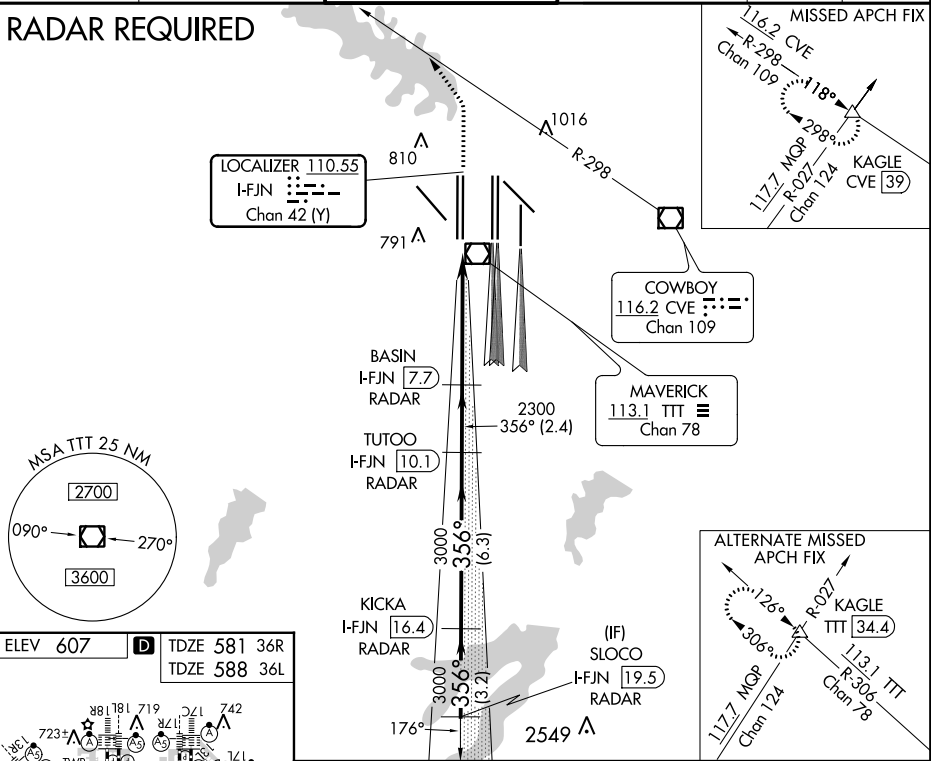
Simultaneous approach authorized with Rwy 35L/C/R. Inop table does not apply to Sidestep 36L Cats A and B. DME or RADAR required.

Rwys 36R/L MALSRR

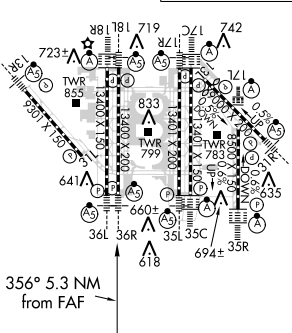
MISSED APPROACH: Climb to 1100, then climbing left turn to 3000 on heading 320° and CVE VOR/DME R-298 to KAGLE INT/CVE 39 DME and hold.

D-ATIS ARR <b>123.775</b> DEP <b>135.925</b>	REGIONAL APP CON <b>118.425</b>	DFW TOWER <b>126.55 127.5 EAST</b> <b>124.15 134.9 WEST</b>	GND CON <b>121.65 121.8 EAST</b> <b>121.85 WEST</b>	CLNC DEL <b>128.25</b>	CPDLC
--	------------------------------------	---	---	---------------------------	-------

## RADAR REQUIRED



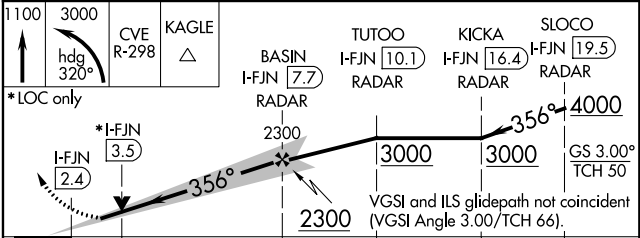
ELEV <b>607</b>	<b>D</b> TDZE <b>581 36R</b> TDZE <b>588 36L</b>
-----------------	---



HIRL all Rwys  
REIL Rwys 13L and 31L  
TDZ/CL all Rwys except 13L and 31L

FAF to MAP 5.3 NM

Knots	60	90	120	150	180
Min:Sec	5:18	3:32	2:39	2:07	1:46



CATEGORY	A	B	C	D
S-ILS 36R	781/18 200 (200-½)			
S-LOC 36R	1000/24	419 (400-½)	1000/40	419 (400-¾)
SIDESTEP 36L	1080/50 492 (500-1)			1080-1½ 492 (500-1½)

SC-2, 29 MAR 2018 to 26 APR 2018

SC-2, 29 MAR 2018 to 26 APR 2018