

# AKUNA SEVEN DEPARTURE (RNAV)

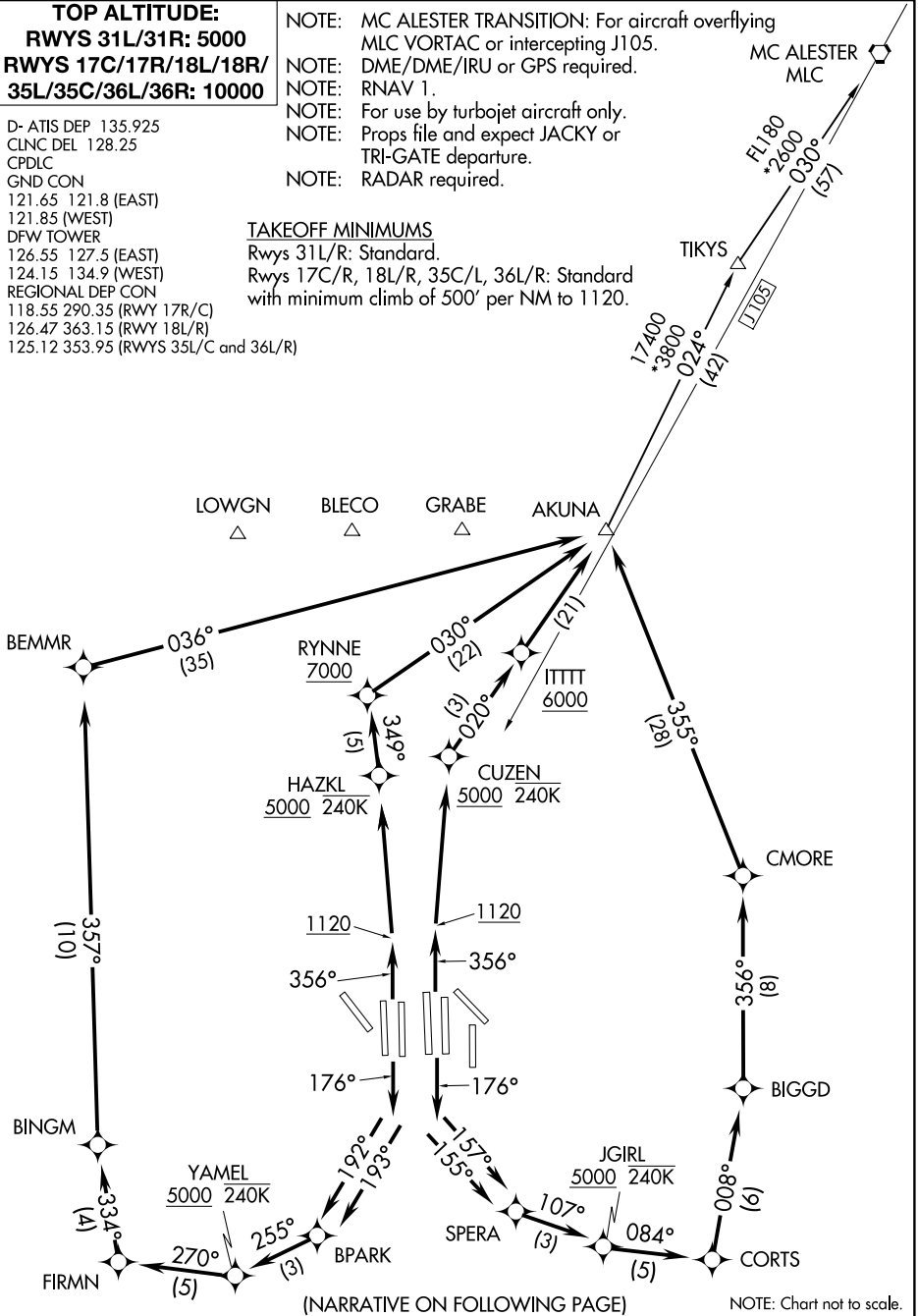
**TOP ALTITUDE:**  
**RWYS 31L/31R: 5000**  
**RWYS 17C/17R/18L/18R/  
35L/35C/36L/36R: 10000**

NOTE: MC ALESTER TRANSITION: For aircraft overflying  
MLC VORTAC or intercepting J105.  
NOTE: DME/DME/IRU or GPS required.  
NOTE: RNAV 1.  
NOTE: For use by turbojet aircraft only.  
NOTE: Props file and expect JACKY or  
TRI-GATE departure.  
NOTE: RADAR required.

D- ATIS DEP 135.925  
CLNC DEL 128.25  
CPDLC  
GND CON  
121.65 121.8 (EAST)  
121.85 (WEST)  
DFW TOWER  
126.55 127.5 (EAST)  
124.15 134.9 (WEST)  
REGIONAL DEP CON  
118.55 290.35 (RWY 17R/C)  
126.47 363.15 (RWY 18L/R)  
125.12 353.95 (RWYS 35L/C and 36L/R)

### TAKEOFF MINIMUMS

Rwys 31L/R: Standard.  
Rwys 17C/R, 18L/R, 35C/L, 36L/R: Standard  
with minimum climb of 500' per NM to 1120.



(NARRATIVE ON FOLLOWING PAGE)

NOTE: Chart not to scale.

SC-2, 30 JAN 2020 to 27 FEB 2020

SC-2, 30 JAN 2020 to 27 FEB 2020

# AKUNA SEVEN DEPARTURE (RNAV)



DEPARTURE ROUTE DESCRIPTION

TAKEOFF RWY 17C: Climb heading 176° to intercept course 157° to SPERA, then on track 107° to cross JGIRL at or above 5000 and at or below 240K, then on depicted route to AKUNA, thence. . . .

TAKEOFF RWY 17R: Climb heading 176° to intercept course 155° to SPERA, then on track 107° to cross JGIRL at or above 5000 and at or below 240K, then on depicted route to AKUNA, thence. . . .

TAKEOFF RWY 18L: Climb heading 176° to intercept course 193° to BPARK, then on track 255° to cross YAMEL at or above 5000 and at or below 240K, then on depicted route to AKUNA, thence. . . .

TAKEOFF RWY 18R: Climb heading 176° to intercept course 192° to BPARK, then on track 255° to cross YAMEL at or above 5000 and at or below 240K, then on depicted route to AKUNA, thence. . . .

TAKEOFF RWYS 35L/C: Climb heading 356° to 1120, then direct CUZEN, cross CUZEN at or above 5000 and at or below 240K, then on track 020° to cross ITTTT at or above 6000, then on depicted route to AKUNA, thence. . . .

TAKEOFF RWYS 36L/R: Climb heading 356° to 1120, then direct HAZKL, cross HAZKL at or above 5000 and at or below 240K, then on track 349° to cross RYNNE at or above 7000, then on depicted route to AKUNA, thence. . . .

. . . .on (transition) maintain 10000. Expect filed altitude ten minutes after departure.

TAKEOFF RWYS 31L/R: Climb heading assigned by ATC, expect RADAR vectors to AKUNA, thence. . . .

. . . .on (transition) maintain 5000. Expect filed altitude ten minutes after departure.

MC ALESTER TRANSITION (AKUNA7.MLC)

SC-2, 30 JAN 2020 to 27 FEB 2020

SC-2, 30 JAN 2020 to 27 FEB 2020