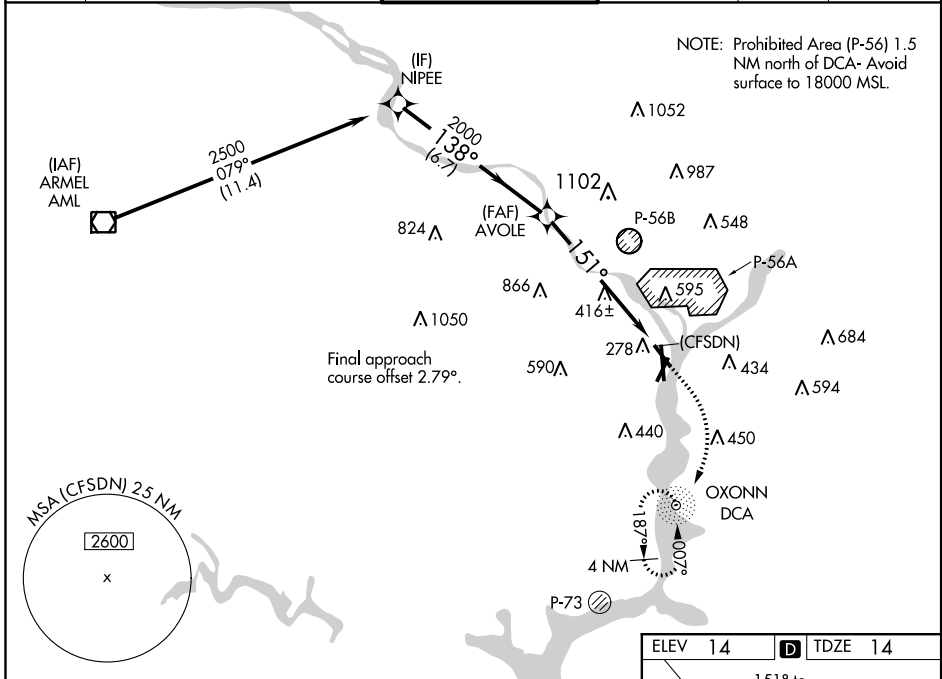


WAAS CH <b>70737</b> <b>W15A</b>	APP CRS <b>151°</b>	Rwy Idg <b>5204</b> TDZE <b>14</b> Apt Elev <b>14</b>
--	------------------------	---

# RNAV (GPS) RWY 15

RONALD REAGAN WASHINGTON NATIONAL (DCA)

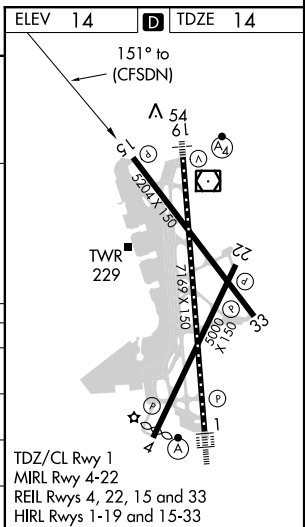
RNP APCH.		MISSED APPROACH: (Do not exceed 210 KIAS until reaching 600 MSL) Climb to 600 then climbing right turn to 1800 direct DCA NDB and hold.		
<p>▼ For uncompensated Baro-VNAV systems, LNAV/VNAV NA below -9°C (16°F) or above 54°C (130°F). Circling NA northeast of Rwy 15-33.                  ▲ Rwy 15 helicopter visibility reduction below ¾ SM NA.</p>				
D-ATIS <b>132.65</b>	POTOMAC APP CON <b>119.85 239.25</b> (WEST/SOUTH) <b>124.2 360.8</b> (EAST)	WASHINGTON TOWER <b>119.1 257.6</b>	GND CON <b>121.7 257.6</b>	CLNC DEL <b>128.25</b>
		CPDLC		



VGSI and RNAV glidepath not coincident (VGSI Angle 3.00/TCH 36).

	600	1800	DCA
	↑	↷	⊙
			* LNAV only.

CATEGORY	A	B	C	D
LPV DA	394-1¼ 380 (400-1¼)			
LNAV/VNAV DA	745-2½ 731 (800-2½)			
LNAV MDA	800-1 786 (800-1)	800-1¼ 786 (800-1¼)	800-2½	786 (800-2½)
CIRCLING	800-1 786 (800-1)	800-1¼ 786 (800-1¼)	840-2½ 826 (900-2½)	900-3 886 (900-3)



NE-3, 12 SEP 2019 to 10 OCT 2019

NE-3, 12 SEP 2019 to 10 OCT 2019