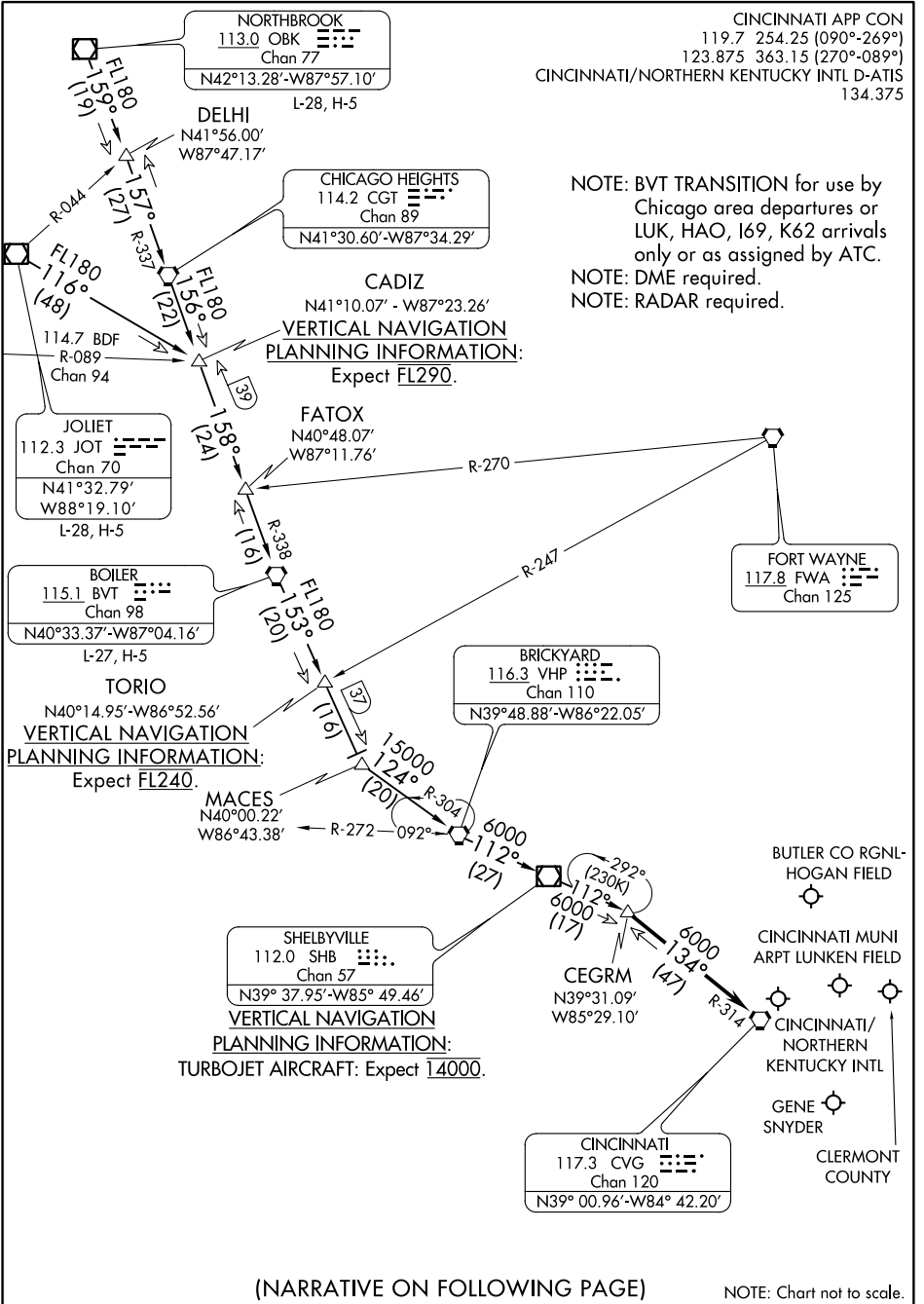


# SHELBYVILLE SIX ARRIVAL

AL-655 (FAA)

COVINGTON, KENTUCKY



SE-1, 10 OCT 2019 to 07 NOV 2019

SE-1, 10 OCT 2019 to 07 NOV 2019

(NARRATIVE ON FOLLOWING PAGE)

NOTE: Chart not to scale.

# SHELBYVILLE SIX ARRIVAL

COVINGTON, KENTUCKY

ARRIVAL ROUTE DESCRIPTION

BOILER TRANSITION (BVT.SHB6): From over BVT VORTAC on BVT R-153 to MACES, then on VHP R-304 to VHP VORTAC, then on VHP R-112 to SHB VOR/DME, then on SHB R-112 to CEGRM, thence....

JOLIET TRANSITION (JOT.SHB6): From over JOT VOR/DME on JOT R-116 to CADIZ, then on BVT R-338 to BVT VORTAC, then on BVT R-153 to MACES, then on VHP R-304 to VHP VORTAC, then on VHP R-112 to SHB VOR/DME, then on SHB R-112 to CEGRM, thence....

NORTHBROOK TRANSITION (OBK.SHB6): From over OBK VOR/DME on OBK R-159 to DELHI, then on CGT R-337 to CGT VORTAC, then on CGT R-156 to CADIZ, then on BVT R-338 to BVT VORTAC, then on BVT R-153 to MACES, then on VHP R-304 to VHP VORTAC, then on VHP R-112 to SHB VOR/DME, then on SHB R-112 to CEGRM, thence....

....from over CEGRM on CVG R-314 to CVG VORTAC. Expect RADAR vectors to final approach course after CEGRM.

SE-1, 10 OCT 2019 to 07 NOV 2019

SE-1, 10 OCT 2019 to 07 NOV 2019