

APP CRS	Rwy Idg	10000
004°	TDZE	896
	Apt Elev	896

RNAV (RNP) Z RWY 36R

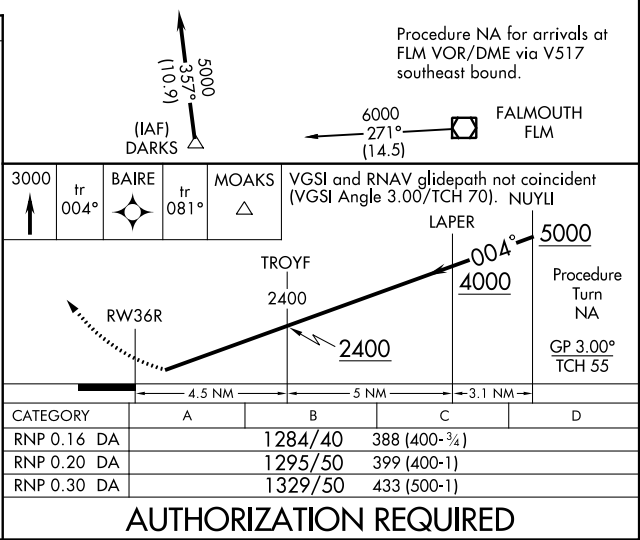
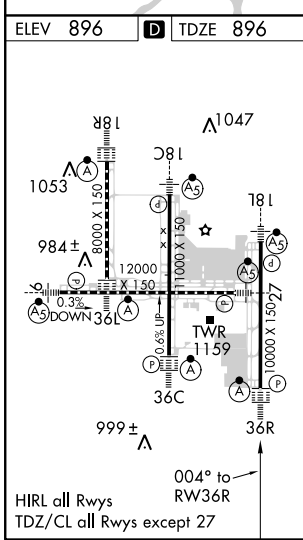
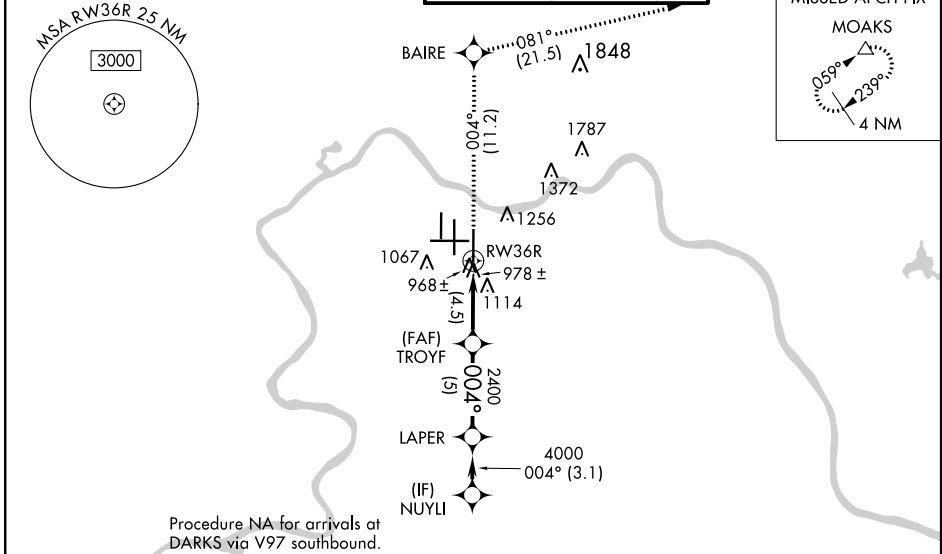
CINCINNATI/NORTHERN KENTUCKY INTL (CVG)

GPS Required. For uncompensated Baro-VNAV systems, procedure NA below NA-16°C (4°F) or above 47°C (116°F). For inoperative ALSF, increase RNP 0.16 and RNP 0.20 visibility to RVR 6000, RNP 0.30 visibility to 1½. Simultaneous approach authorized with Rwy 36L/C. Use of FD or AP providing RNAV track guidance required during simultaneous operations.



MISSED APPROACH: Climb to 3000 via 004° track to BAIRE and via 081° track to MOAKS and hold.

D-ATIS	CINCINNATI APP CON	CINCINNATI TOWER	GND CON	CLNC DEL
ARR 134.375 DEP 135.3	119.7 254.25 (090°-269°) 123.875 363.15 (270°-089°)	118.975 360.85 (RWY 18L/36R) 118.3 (RWYS 18C/36C, 09/27) 133.325 (RWY 18R/36L)	121.7	127.175



SE-1, 18 JUL 2019 to 15 AUG 2019

SE-1, 18 JUL 2019 to 15 AUG 2019