

APP CRS	Rwy Idg	11000
004°	TDZE	851
	Apt Elev	896

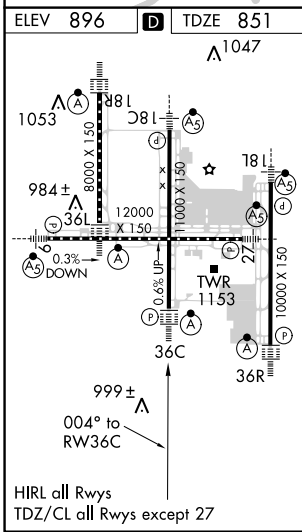
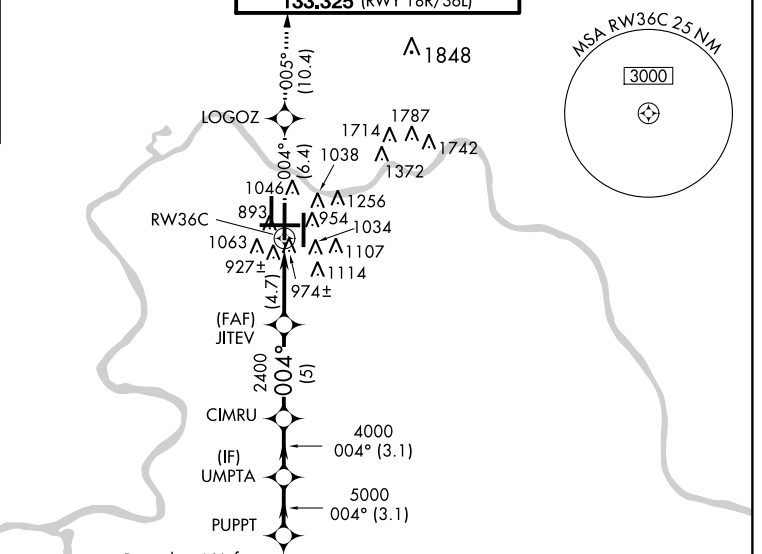
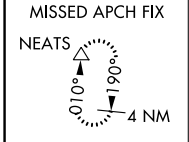
RNAV (RNP) Z RWY 36C

CINCINNATI/NORTHERN KENTUCKY INTL (CVG)

NA For uncompensated Baro-VNAV systems, Procedure NA below -16°C (4°F) or above 47°C (116°F). For inoperative ALSF, increase RNP 0.24 visibility to 1½, RNP 0.30 visibility 1¾. Simultaneous approach authorized with Rwy 36L/R. Use of FD or AP providing RNAV track guidance required during simultaneous operations.

ALSF-2 MISSED APPROACH: Climb to 3000 via 004° track to LOGOZ and via 005° track to NEATS and hold.

D-ATIS ARR 134.375 DEP 135.3	CINCINNATI APP CON 119.7 254.25 (090°-269°) 123.875 363.15 (270°-089°)	CINCINNATI TOWER 118.975 360.85 (RWY 18L/36R) 118.3 (RWYS 18C/36C, 09/27) 133.325 (RWY 18R/36L)	GND CON 121.7	CLNC DEL 127.175
---	--	---	-------------------------	----------------------------



3000	LOGOZ	NEATS	VGSI and RNAV glidepath not coincident (VGSI Angle 3.00/TCH 77).	Procedure Turn NA
tr 004°	tr 005°	△		PUPPT
	JITEV	CIMRU	UMPTA	6000
	2400	4000	5000	GP 3.00° TCH 52
	RW36C	2400	4000	
	4.7 NM	5 NM	3.1 NM	3.1 NM
CATEGORY	A	B	C	D
RNP 0.24 DA		1295/50	444 (400-1)	
RNP 0.30 DA		1318/60	467 (500-1¼)	

AUTHORIZATION REQUIRED

SE-1, 01 FEB 2018 to 01 MAR 2018

SE-1, 01 FEB 2018 to 01 MAR 2018