

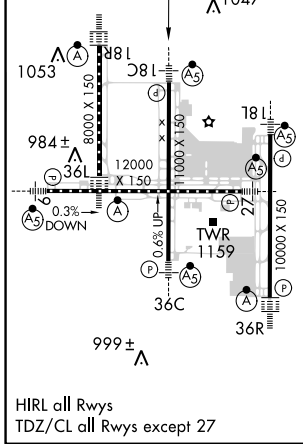
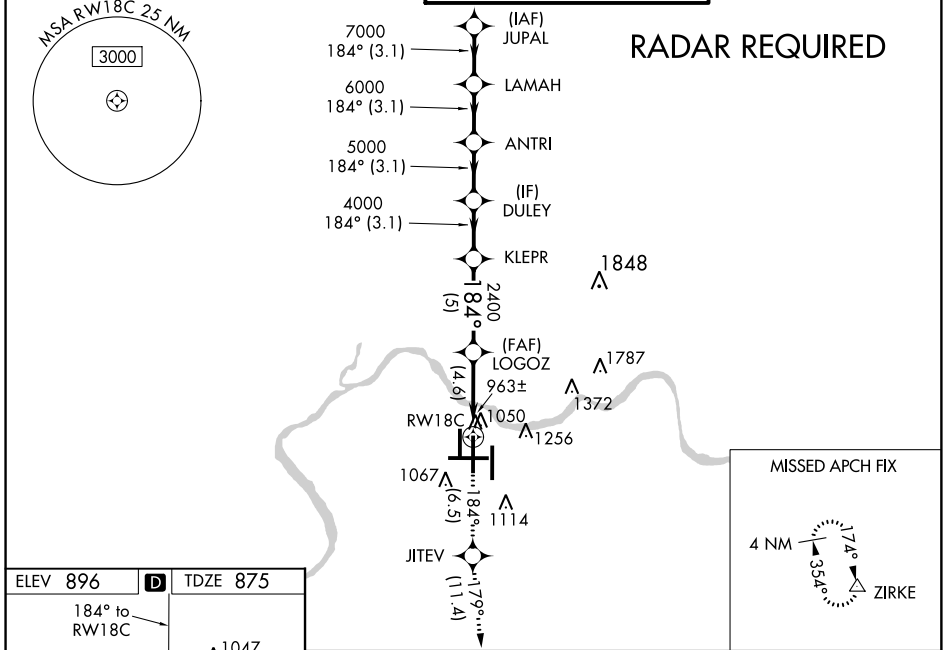
APP CRS	Rwy ldg	<b>11000</b>
<b>184°</b>	TDZE	<b>875</b>
	Apt Elev	<b>896</b>

# RNAV (RNP) Z RWY 18C

CINCINNATI/NORTHERN KENTUCKY INTL (CVG)

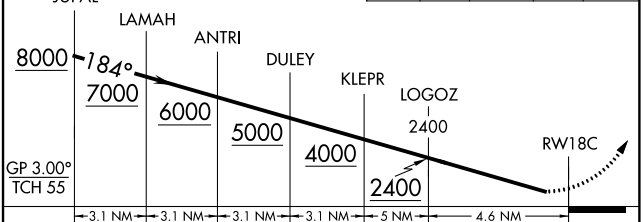
<p><b>GPS Required.</b> For uncompensated Baro-VNAV systems, procedure NA below -16°C (4°F) or above 47°C (116°F). For inoperative SSALR, increase RNP 0.15 visibility to 1½, RNP 0.30 visibility to 1¾. Simultaneous approach authorized with Rwy 18L/R. Use of FD or AP providing RNAV track guidance required during simultaneous operations.</p>	<p>MALSRL</p>	<p><b>MISSED APPROACH:</b> Climb to 3000 via 184° track to JITEV and via 179° track to ZIRKE and hold.</p>

D-ATIS	CINCINNATI APP CON	CINCINNATI TOWER	GND CON	CLNC DEL
ARR DEP	<b>119.7 254.25</b> (090°- 269°)	<b>118.975 360.85</b> (RWY 18L/36R)	<b>121.7</b>	<b>127.175</b>
<b>134.375 135.3</b>	<b>123.875 363.15</b> (270°- 089°)	<b>118.3</b> (RWYS 18C/36C, 09/27)		
		<b>133.325</b> (RWY 18R/36L)		



VGSI and RNAV glidepath not coincident (VGSI Angle 3.00/TCH 68).

3000	tr 184°	JITEV	tr 179°	ZIRKE
------	---------	-------	---------	-------



CATEGORY	A	B	C	D
RNP 0.15 DA	1321/50	446 (500-1)		
RNP 0.30 DA	1389/60	514 (600-1¼)		

## AUTHORIZATION REQUIRED

SE-1, 24 MAY 2018 to 21 JUN 2018

SE-1, 24 MAY 2018 to 21 JUN 2018