

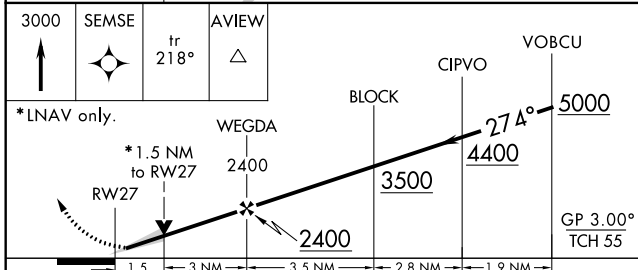
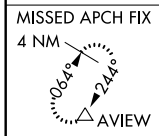
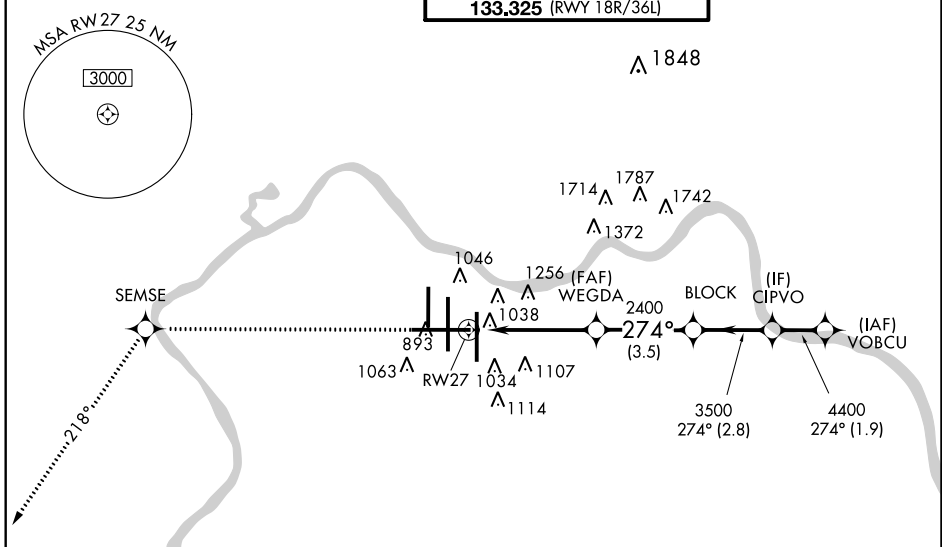
WAAS CH 86809 W27A	APP CRS 274°	Rwy Idg 12000 TDZE 875 Apt Elev 896
--	------------------------	--

RNAV (GPS) Y RWY 27

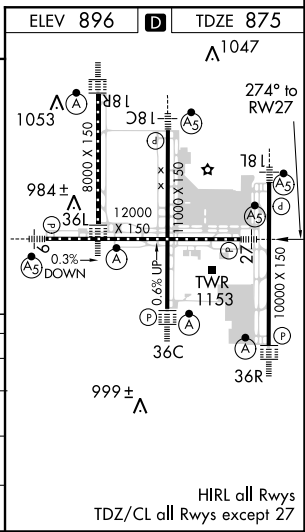
CINCINNATI/NORTHERN KENTUCKY INTL (CVG)

<p>▽ For uncompensated Baro-VNAV systems, LNAV/VNAV NA below -16° C (4° F) or above 47° C (116° F). DME/DME RNP-0.3 NA. **RVR 1800 authorized with use of FD or AP or HUD to DA.</p>	MALSR	<p>MISSED APPROACH: Climb to 3000 direct SEMSE then via 218° track to AVIEW and hold.</p>

D-ATIS ARR 134.375 DEP 135.3	CINCINNATI APP CON 119.7 254.25 (090°-269°) 123.875 363.15 (270°-089°)	CINCINNATI TOWER 118.975 360.85 (RWY 18L/36R) 118.3 (RWYS 18C/36C, 09/27) 133.325 (RWY 18R/36L)	GND CON 121.7	CLNC DEL 127.175
---	--	---	-------------------------	----------------------------



RADAR REQUIRED



CATEGORY	A	B	C	D
LPV DA	**1075/24		200 (200-½)	
LNAV/VNAV DA	1349/60		474 (500-1¼)	
LNAV MDA	1420/24	545 (600-½)	1420/60	545 (600-1¼)
CIRCLING	1460-1	564 (600-1)	1460-1½	1560-2
			564 (600-1½)	664 (700-2)

SE-1, 29 MAR 2018 to 26 APR 2018

SE-1, 29 MAR 2018 to 26 APR 2018