

LOC I-JDP 108.7	APP CRS 274°	Rwy Idg 12000 TDZE 875 Apt Elev 896
---------------------------	------------------------	--

ILS or LOC RWY 27

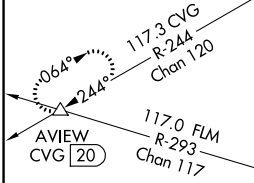
CINCINNATI/NORTHERN KENTUCKY INTL (CVG)

**** RVR 1800 authorized with use of FD or AP or HUD to DA.**

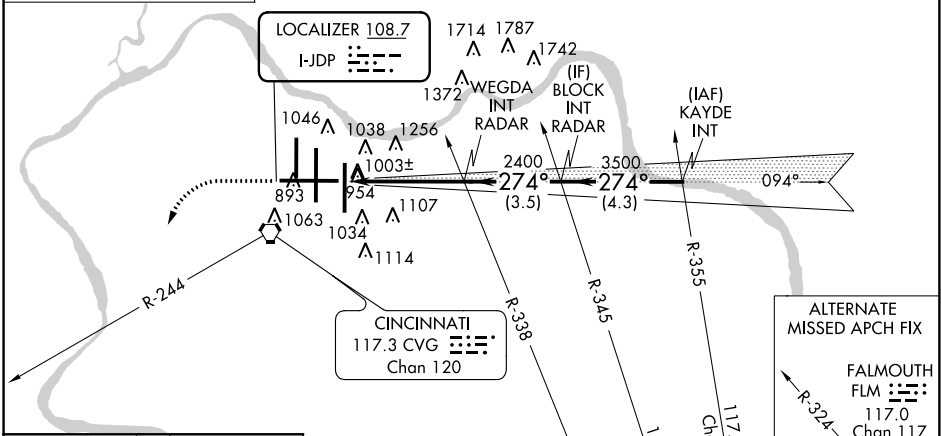
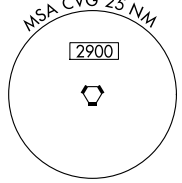


MISSED APPROACH: Climb to 2000 then climbing left turn to 3000 on heading 230° and CVG R-244 to AVIEW INT/CVG 20 DME and hold.

D-ATIS ARR 134.375 DEP 135.3	CINCINNATI APP CON 119.7 254.25 (090°-269°) 123.875 363.15 (270°-089°)	CINCINNATI TOWER 118.975 360.85 (RWY 18L/36R) 118.3 (RWYS 18C/36C, 09/27) 133.325 (RWY 18R/36L)	GND CON 121.7	CLNC DEL 127.175
---	--	---	-------------------------	----------------------------



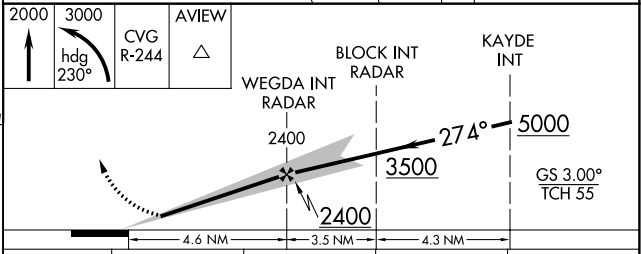
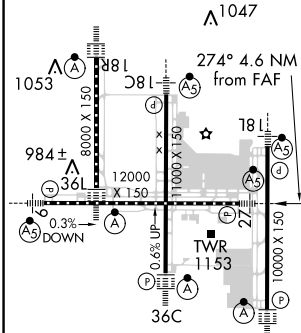
RADAR REQUIRED



SE-1, 04 JAN 2018 to 01 FEB 2018

SE-1, 04 JAN 2018 to 01 FEB 2018

ELEV 896	D	TDZE 875
----------	----------	----------



FAF to MAP 4.6 NM	Knots: 60 90 120 150 180			
	Min:Sec: 4:36 3:04 2:18 1:50 1:32			
CATEGORY	A	B	C	D
S-ILS 27 **	1075/24		200 (200-1/2)	
S-LOC 27	1420/24	545 (600-1/2)	1420/60	545 (600-1/4)
CIRCLING	1460-1	564 (600-1)	1460-1 1/2 564 (600-1/2)	1560-2 664 (700-2)