

LOC/DME I-SIC 111.55 Chan 52 (Y)	APP CRS 186°	Rwy Idg 11000 TDZE 875 Apt Elev 896
--	------------------------	--

ILS or LOC RWY 18C

CINCINNATI/NORTHERN KENTUCKY INTL (CVG)

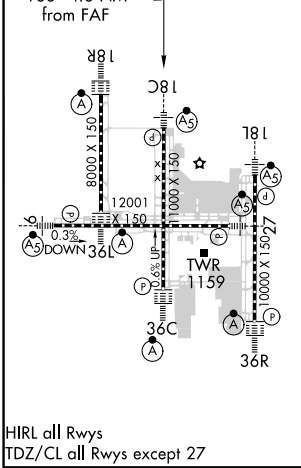
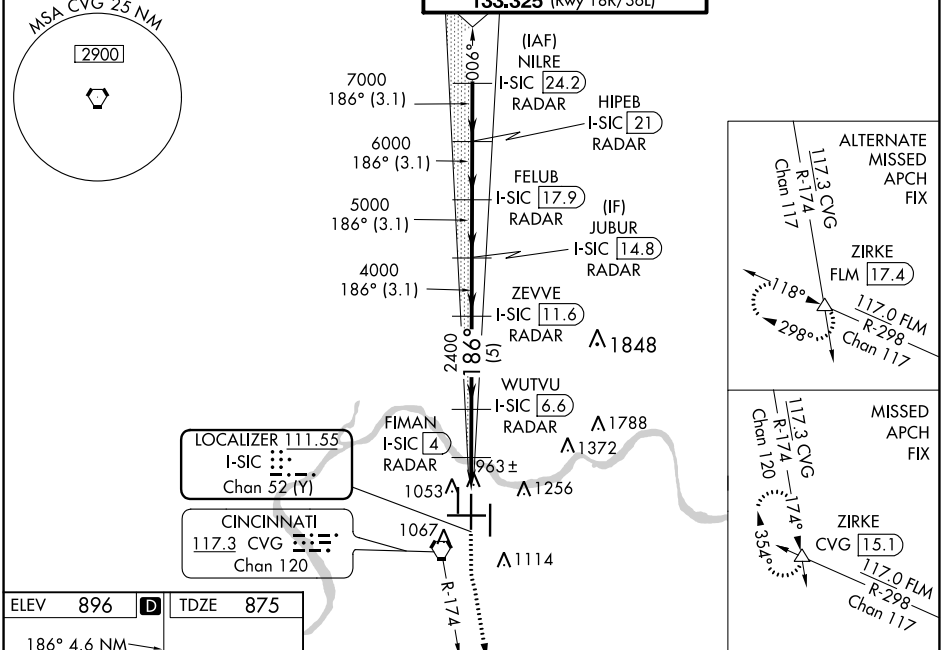
RADAR required for procedure entry.
DME or RADAR required.

MALSRS

MISSED APPROACH: Climb to 1500 then climbing left turn to 3000 on CVG R-174 to ZIRKE INT/CVG 15.1 DME and hold.

Simultaneous approach authorized.

D-ATIS ARR 134.375 DEP 135.3	CINCINNATI APP CON 119.7 363.15 (090°-269°) 123.875 363.15 (270°-089°)	CINCINNATI TOWER 118.975 360.85 (Rwy 18L/36R) 118.3 (Rwys 18C/36C, 09/27) 133.325 (Rwy 18R/36L)	GND CON 121.7	CLNC DEL 127.175
---	--	---	-------------------------	----------------------------



VGSi and ILS glidepath not coincident (VGSi Angle 3.00/TCH 71).

NILRE I-SIC [24.2] RADAR	HIPEB I-SIC [21] RADAR	FELUB I-SIC [17.9] RADAR	JUBUR I-SIC [14.8] RADAR	ZEVVE I-SIC [11.6] RADAR	WUTVU I-SIC [6.6] RADAR	FIMAN I-SIC [4] RADAR	CINCINNATI I-SIC [3] RADAR	CINCINNATI I-SIC [2] RADAR
8000	7000	6000	5000	4000	2400	1560	1500	3000
GS 3.00° TCH 55					* LOC only			
-3.1 NM			-3.1 NM		-5 NM		-2.6 NM	
1500	3000	ZIRKE	CVG R-174					
CATEGORY			A		B		D	
S-ILS 18C			1075/18		200 (200-½)			
S-LOC 18C			1260/24 385 (400-½)		1260/35 385 (400-¾)			
CIRCLING			1460-1 564 (600-1)		1560-1¾ 664 (700-1¾)		1560-2 664 (700-2)	

SE-1, 07 OCT 2021 to 04 NOV 2021

SE-1, 07 OCT 2021 to 04 NOV 2021