

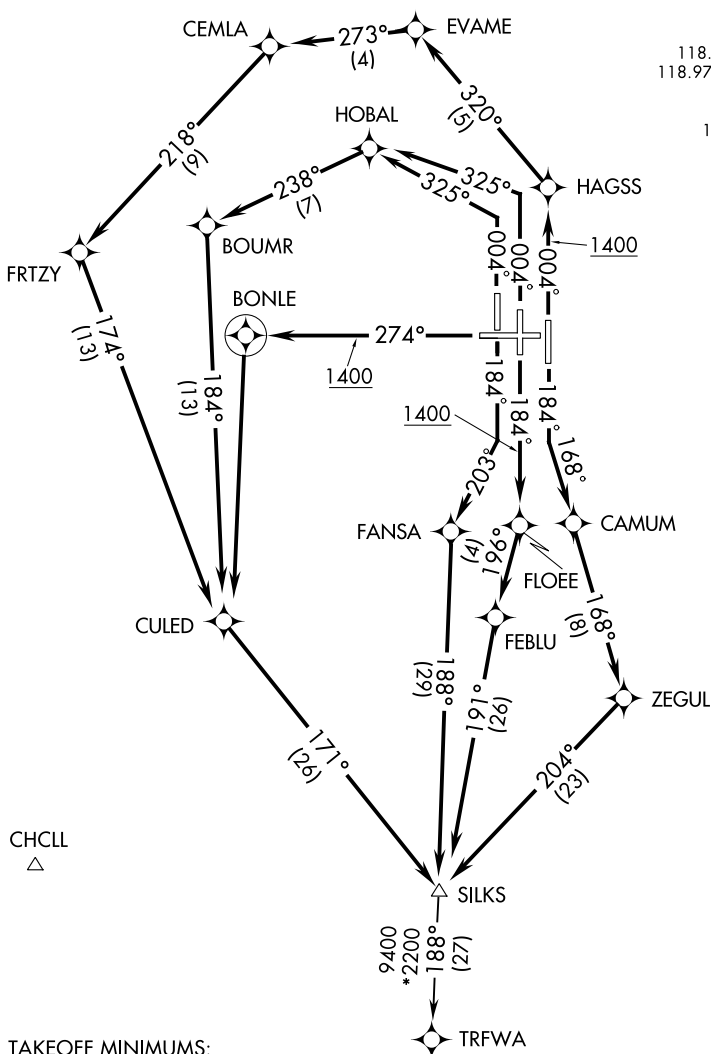
(SILKS4.SILKS) 17117

# SILKS FOUR DEPARTURE (RNAV)

CINCINNATI/NORTHERN KENTUCKY INTL (CVG)

AL-655 (FAA)

COVINGTON, KENTUCKY



D-ATIS DEP 135.3  
 CINCINNATI TOWER  
 118.3 (RWYS 18C/36C, 9/27)  
 118.975 360.85 (RWY 18L/36R)  
 133.325 (RWY 18R/36L)  
 GND CON  
 121.7 (WEST) 121.3 (EAST)  
 CLNC DEL  
 127.175  
 CINCINNATI DEP CON  
 126.65 (001°-180°)  
 128.7 (181°-360°)

**TOP ALTITUDE:**  
 (JETS/PROPS)  
 6000 4000

SE-1, 18 JUL 2019 to 15 AUG 2019

SE-1, 18 JUL 2019 to 15 AUG 2019

### TAKEOFF MINIMUMS:

Rwy 9: NA-ATC.  
 Rwy 18L, 18C, 18R, 27, 36R, 36C, 36L: Standard  
 with minimum climb of 500' per NM to 1400.

- NOTE: If unable to accept climb rates, advise ATC on initial contact.
- NOTE: DME/DME/IRU or GPS required.
- NOTE: Radar required.
- NOTE: RNAV 1.
- NOTE: Transponder code will be issued via PDC or Cincinnati CLNC DEL.
- NOTE: Accelerate to 250K, if unable, advise ATC.

(NARRATIVE ON FOLLOWING PAGE)

NOTE: Chart not to scale.

# SILKS FOUR DEPARTURE (RNAV)

(SILKS4.SILKS) 10DEC15

COVINGTON, KENTUCKY

CINCINNATI/NORTHERN KENTUCKY INTL (CVG)



DEPARTURE ROUTE DESCRIPTION

TAKEOFF RUNWAY 18L: Climb heading 184° to intercept course 168° to CAMUM, then on depicted route to SILKS, thence. . . .

TAKEOFF RUNWAY 18C: Climb heading 184° to 1400, then direct FLOEE, then on depicted route to SILKS, thence. . . .

TAKEOFF RUNWAY 18R: Climb heading 184° to intercept course 203° to FANSA, then on depicted route to SILKS, thence. . . .

TAKEOFF RUNWAY 27: Climb heading 274° to 1400, then direct BONLE, then left turn direct CULED, then on depicted route to SILKS, thence. . . .

TAKEOFF RUNWAY 36R: Climb heading 004° to 1400, then direct HAGSS, then on depicted route to SILKS, thence. . . .

TAKEOFF RUNWAY 36C: Climb heading 004° to intercept course 325° to HOBAL, then on depicted route to SILKS, thence. . . .

TAKEOFF RUNWAY 36L: Climb heading 004° to intercept course 325° to HOBAL, then on depicted route to SILKS, thence. . . .

. . . . turbojet aircraft maintain 6000, all other aircraft maintain 4000. Expect clearance to filed altitude within 10 minutes after departure.

TRFWA TRANSITION (SILKS4.TRFWA):

SE-1, 18 JUL 2019 to 15 AUG 2019

SE-1, 18 JUL 2019 to 15 AUG 2019