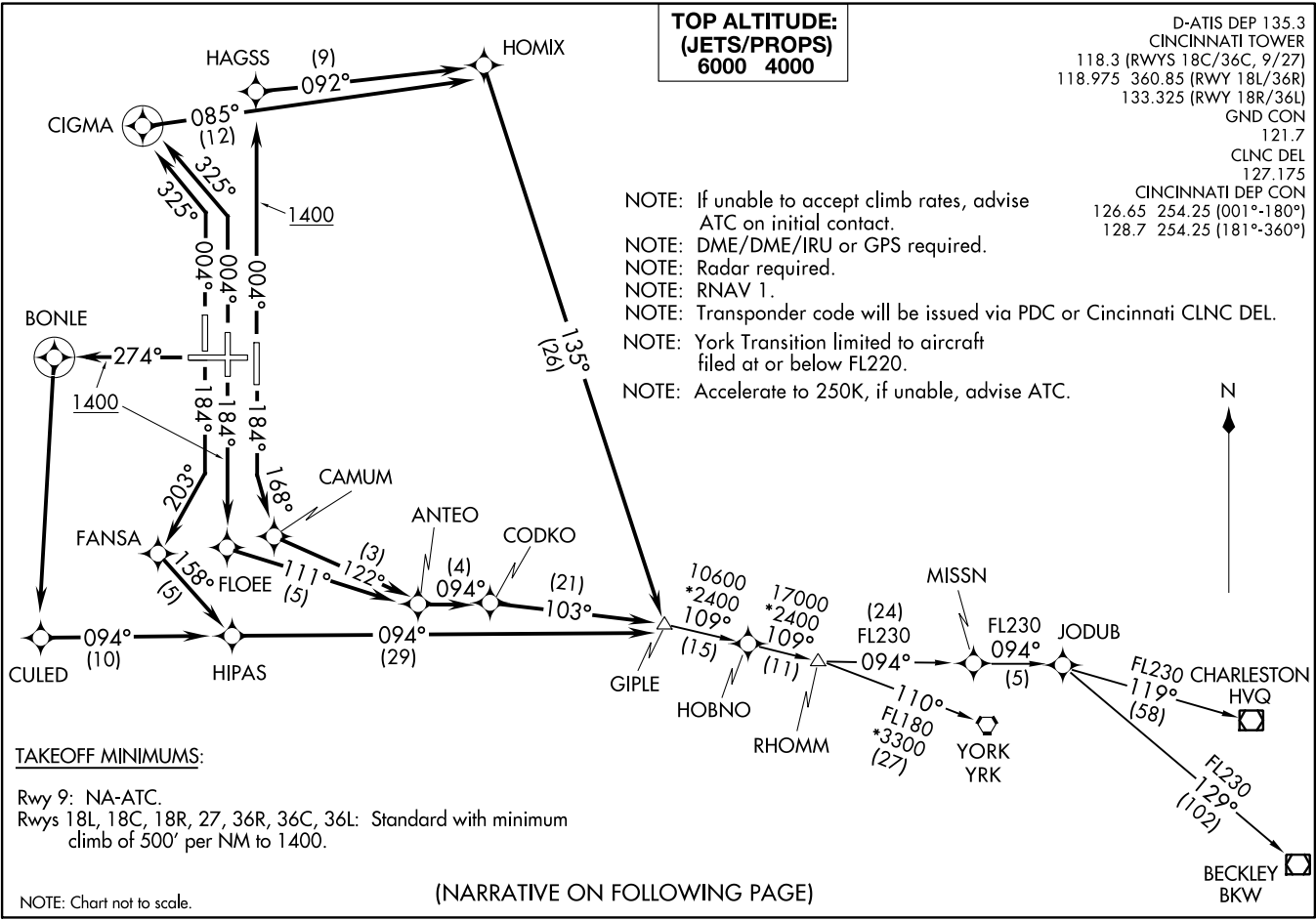


GIPLE SIX DEPARTURE (RNAV) (GIPLE6.GIPLE) 29MAR18  
CINCINNATI/NORTHERN KENTUCKY INTL (CVG) COVINGTON, KENTUCKY



(GIPLE6.GIPLE) 19339  
CINCINNATI/NORTHERN KENTUCKY INTL (CVG) COVINGTON, KENTUCKY  
AL-655 (FAA)

D-ATIS DEP 135.3  
 CINCINNATI TOWER  
 118.3 (RWYS 18C/36C, 9/27)  
 118.975 360.85 (RWY 18L/36R)  
 133.325 (RWY 18R/36L)  
 GND CON  
 121.7  
 CLNC DEL  
 127.175  
 CINCINNATI DEP CON  
 126.65 254.25 (001°-180°)  
 128.7 254.25 (181°-360°)

(NARRATIVE ON FOLLOWING PAGE)



DEPARTURE ROUTE DESCRIPTION

TAKEOFF RUNWAY 18L: Climb heading 184° to intercept course 168° to CAMUM, then on depicted route to GIPLE, thence....

TAKEOFF RUNWAY 18C: Climb heading 184° to 1400, then direct FLOEE, then on depicted route to GIPLE, thence....

TAKEOFF RUNWAY 18R: Climb heading 184° to intercept course 203° to FANSA, then on depicted route to GIPLE, thence....

TAKEOFF RUNWAY 27: Climb heading 274° to 1400, then direct BONLE, then left turn direct CULED, then left turn on track 094° to HIPAS, then on depicted route to GIPLE, thence....

TAKEOFF RUNWAY 36R: Climb heading 004° to 1400, then direct HAGSS, then on depicted route to GIPLE, thence....

TAKEOFF RUNWAY 36C: Climb heading 004° to intercept course 325° to CIGMA, then right turn direct HOMIX, then on depicted route to GIPLE, thence....

TAKEOFF RUNWAY 36L: Climb heading 004° to intercept course 325° to CIGMA, then right turn direct HOMIX, then on depicted route to GIPLE, thence....

....turbojet aircraft maintain 6000, all other aircraft maintain 4000. Expect clearance to filed altitude within 10 minutes after departure.

BECKLEY TRANSITION (GIPLE6.BKW):

CHARLESTON TRANSITION (GIPLE6.HVQ):

JODUB TRANSITION (GIPLE6.JODUB):

YORK TRANSITION (GIPLE6.YRK):

SE-1, 28 JAN 2021 to 25 FEB 2021

SE-1, 28 JAN 2021 to 25 FEB 2021