

JACKSONVILLE INTL 

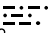
JACKSONVILLE APP CON
127.775 379.9
CRG ATIS
125.4
JAX D-ATIS
125.85
KNIP ATIS
290.425
KNRB ATIS *
236.775
VQG ATIS
125.275

MAYPORT NS
(ADM DAVID L MCDONALD FLD) 

JACKSONVILLE EXEC
AT CRAIG 

JACKSONVILLE NAS
(TOWERS FLD) 

CECIL 

CRAIG
114.5 CRG 
Chan 92
N30°20.33' - W81°30.60'

MOSEL
N30°10.53' - W81°33.00'

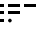
TURBOJET VERTICAL NAVIGATION
PLANNING INFORMATION
Expect 5000

BASS
N29°40.84' - W81°32.74'

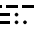
TURBOJET VERTICAL NAVIGATION
PLANNING INFORMATION
Expect 13000 250K

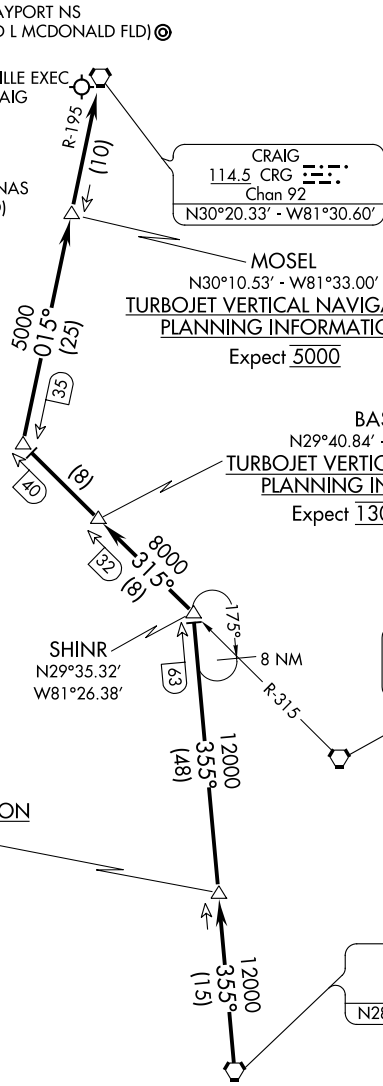
CROPY
N28°47.55' - W81°21.59'

TURBOJET VERTICAL NAVIGATION
PLANNING INFORMATION
Expect FL270

ORMOND BEACH
112.6 OMN 
Chan 73

SHINR
N29°35.32' - W81°26.38'

ORLANDO
112.2 ORL 
Chan 59
N28°32.56' - W81°20.10'
L-21-23-24, H-8



NOTE: RADAR required.
NOTE: DME required.
NOTE: Chart not to scale.

ARRIVAL ROUTE DESCRIPTION

From over ORL VORTAC on ORL R-355 to SHINR, then on OMN R-315 to POGIE, then on CRG R-195 to CRG VORTAC. Expect RADAR vectors to final approach course after CRG VORTAC.

SE-3, 09 SEP 2021 to 07 OCT 2021

SE-3, 09 SEP 2021 to 07 OCT 2021