


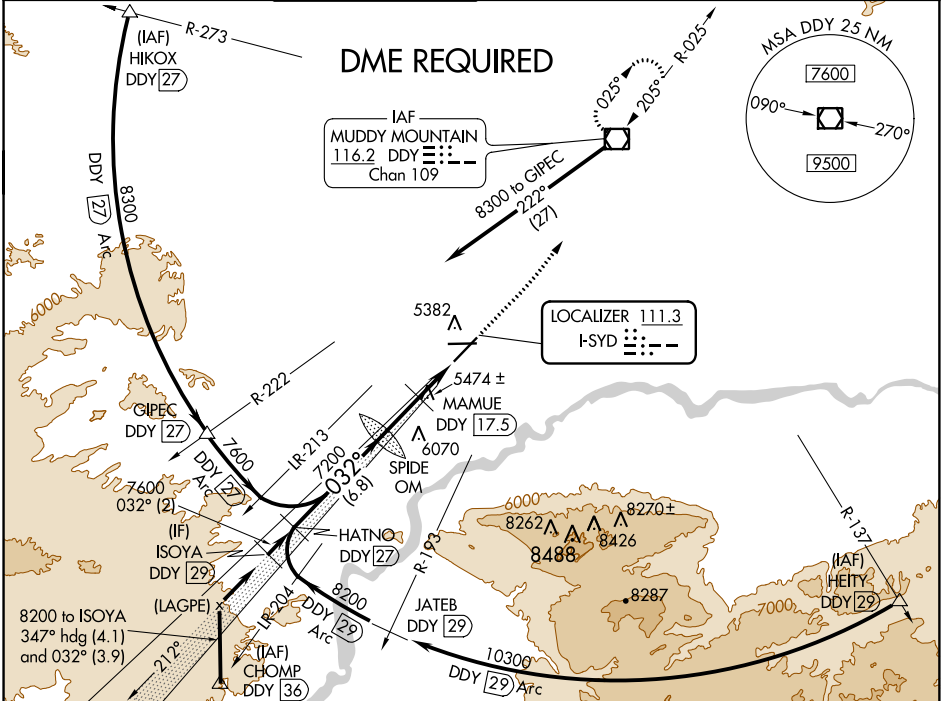
LOC I-SYD 111.3	APP CRS 032°	Rwy ldg TDZE Apt Elev	10165 5328 5344
---------------------------	------------------------	-----------------------------	--

ILS or LOC RWY 3
CASPER/NATRONA COUNTY INTL (CPR)

⚠ DME from DDY VOR/DME. Simultaneous reception of I-SYD and DDY DME required. When local altimeter setting not received, use Douglas altimeter setting; increase DA to 5697 feet and all MDAs 180 feet, increase S-ILS visibility all Cats ¼ mile and S-LOC visibility Cats B, C, and D ½ mile, increase Circling visibility Cats B, C, and D ½ mile. For inoperative MALSRS when using Douglas altimeter setting increase S-ILS visibility all Cats to 1 ¼ mile. **MAMUE FIX MINIMUMS:** For inoperative MALSRS, increase S-LOC visibility Cats C, and D to 1 ½ mile. #RVR 1800 authorized with use of FD or AP or HUD to DA.

MALSRS
 MISSED APPROACH: Climb to 7500 then left turn direct DDY VOR/DME and hold.

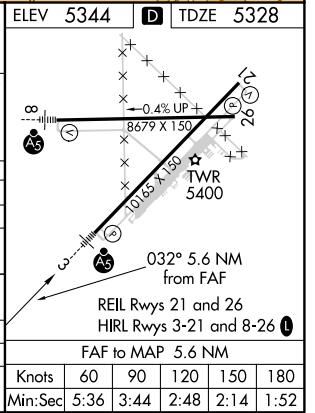
ATIS 126.15	CASPER APP CON * 120.65 354.1	CASPER TOWER * 118.3 (CTAF) 0 257.8	GND CON 121.9	CLNC DEL 121.9 257.8	CASPER RADIO 122.4 255.4	UNICOM 122.95
-----------------------	---	---	-------------------------	--------------------------------	------------------------------------	-------------------------



NW-1, 12 SEP 2019 to 10 OCT 2019

NW-1, 12 SEP 2019 to 10 OCT 2019

ISOYA DDY [29] *6400 when using Douglas altimeter setting.	HATNO DDY [27]	SPIDE OM 7183	MAMUE DDY [17.5]	DDY [14.7] *LOC only
8200	7600	7200	*6220	7500
GS 3.00° TCH 50	2 NM	6.8 NM	2.9 NM	2.7 NM
CATEGORY	A	B	C	D
S-ILS 3	# 5528/24 200 (200-½)			
S-LOC 3	6220/40	892 (900-¾)	6220-2	892 (900-2)
CIRCLING	6220-1¼	876 (900-1½)	6220-2½ 876 (900-2½)	6220-2¾ 876 (900-2¾)
MAMUE FIX MINIMUMS				
S-LOC 3	5740/24	412 (400-½)	5740/40	412 (400-¾)
CIRCLING	5740-1 396 (400-1)	5800-1 456 (500-1)	5800-1½ 456 (500-1½)	5900-2 556 (600-2)



FAF to MAP 5.6 NM	Knots	60	90	120	150	180
	Min:Sec	5:36	3:44	2:48	2:14	1:52