

# BANKR TWO ARRIVAL(RNAV)

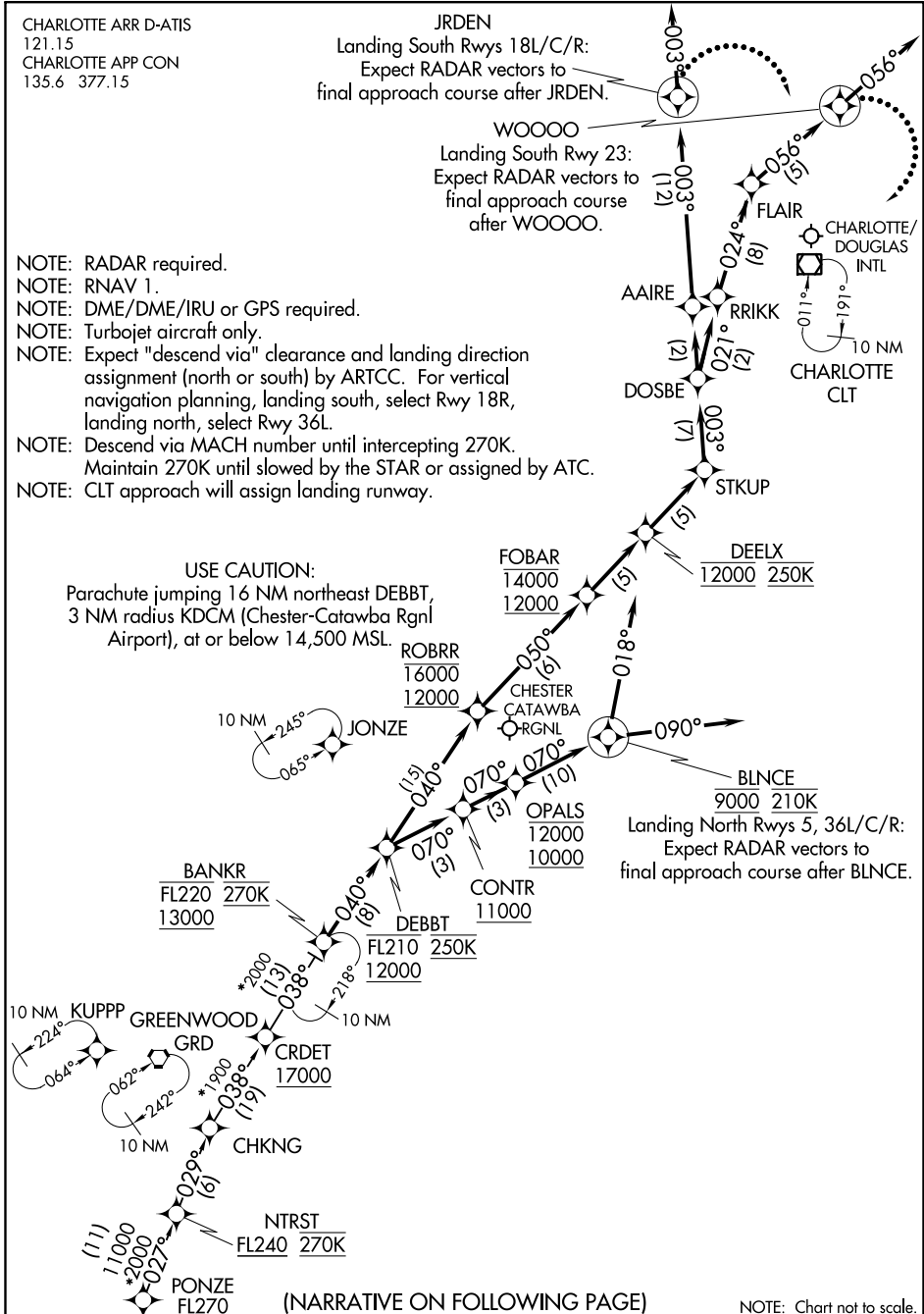
CHARLOTTE ARR D-ATIS  
121.15  
CHARLOTTE APP CON  
135.6 377.15

JRDEN  
Landing South Rwy 18L/C/R:  
Expect RADAR vectors to  
final approach course after JRDEN.

WOOOO  
Landing South Rwy 23:  
Expect RADAR vectors to  
final approach course  
after WOOOO.

- NOTE: RADAR required.
- NOTE: RNAV 1.
- NOTE: DME/DME/IRU or GPS required.
- NOTE: Turbojet aircraft only.
- NOTE: Expect "descend via" clearance and landing direction assignment (north or south) by ARTCC. For vertical navigation planning, landing south, select Rwy 18R, landing north, select Rwy 36L.
- NOTE: Descend via MACH number until intercepting 270K. Maintain 270K until slowed by the STAR or assigned by ATC.
- NOTE: CLT approach will assign landing runway.

USE CAUTION:  
Parachute jumping 16 NM northeast DEBBT,  
3 NM radius KDCM (Chester-Catawba Rgnl  
Airport), at or below 14,500 MSL.



SE-2. 30 JAN 2020 to 27 FEB 2020

SE-2. 30 JAN 2020 to 27 FEB 2020

(NARRATIVE ON FOLLOWING PAGE)

NOTE: Chart not to scale.

# BANKR TWO ARRIVAL(RNAV)

**BANKR TWO ARRIVAL (RNAV)**

**ARRIVAL ROUTE DESCRIPTION**

PONZE TRANSITION (PONZE.BANKR2)

LANDING CLT:

From BANKR on track 040° to cross DEBBT between 12000 and FL210 and at 250K.

LANDING RWY 5: From DEBBT on track 070° to cross CONTR at or above 11000, then on track 070° to cross OPALS between 10000 and 12000, then on track 070° to cross BLNCE at 9000 and at 210K, then on heading 018°. Expect RADAR vectors to final approach course.

LANDING RWYS 18L/C/R: From DEBBT on track 040° to cross ROBRR between 12000 and 16000, then on track 050° to cross FOBAR between 12000 and 14000, then on track 050° to cross DEELX at 12000 and at 250K, then on track 050° to STKUP, then on track 003° to DOSBE, then on track 003° to AAIRE, then on track 003° to JRDEN, then on track 003°. Expect RADAR vectors to final approach course.

LANDING RWY 23: From DEBBT on track 040° to cross ROBRR between 12000 and 16000, then on track 050° to cross FOBAR between 12000 and 14000, then on track 050° to cross DEELX at 12000 and at 250K, then on track 050° to STKUP, then on track 003° to DOSBE, then on track 021° to RRIKK, then on track 024° to FLAIR, then on track 056° to WOOOO, then on track 056°. Expect RADAR vectors to final approach course.

LANDING RWYS 36L/C/R: From DEBBT on track 070° to cross CONTR at or above 11000, then on track 070° to cross OPALS between 10000 and 12000, then on track 070° to cross BLNCE at 9000 and at 210K, then on heading 090°. Expect RADAR vectors to final approach course.

LOST COMMUNICATIONS:

RWYS 18L/C/R: After JRDEN turn right direct CLT VOR/DME and hold maintain 12000.

RWY 23: After WOOOO turn right direct CLT VOR/DME and hold maintain 12000.

SE-2. 30 JAN 2020 to 27 FEB 2020

SE-2. 30 JAN 2020 to 27 FEB 2020