

(KRITR5.KRITR) 19059

AL-78 (FAA)

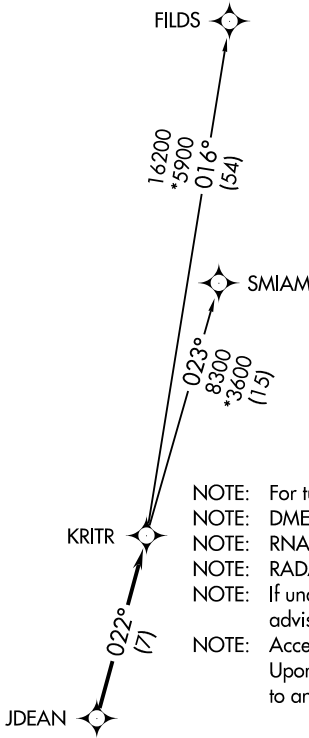
CHARLOTTE/DOUGLAS INTL (CLT)

CHARLOTTE, NORTH CAROLINA

KRITR FIVE DEPARTURE (RNAV)

D-ATIS DEP 132.1
 CLNC DEL
 127.15 348.6
 CPDLC
 GND CON
 121.8 348.6 (WEST)
 121.9 348.6 (EAST)
 CHARLOTTE TOWER
 118.1 257.8 (Rwys 18L-36R, 5-23)
 126.4 257.8 (Rwy 18C-36C)
 133.35 257.8 (Rwy 18R-36L)
 CHARLOTTE DEP CON
 120.5 257.2

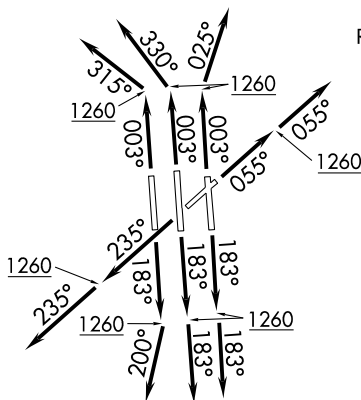
**TOP ALTITUDE:
8000**



- NOTE: For turbojets only.
- NOTE: DME/DME/IRU or GPS required.
- NOTE: RNAV 1.
- NOTE: RADAR required.
- NOTE: If unable to accept climb rates, advise ATC on initial contact.
- NOTE: Accelerate to 250K, if unable advise ATC. Upon reaching 10000 MSL, accelerate to and maintain 280K, if unable advise ATC.

TAKEOFF MINIMUMS

- Rwys 18C/L/R, 23, 36C/R: Standard with minimum climb of 500' per NM to 1260.
- Rwy 5: Standard with minimum climb of 500' per NM to 1300.
- Rwy 36L: Standard with minimum climb of 500' per NM to 1400.



(NARRATIVE ON FOLLOWING PAGE)

NOTE: Chart not to scale.

KRITR FIVE DEPARTURE (RNAV)

(KRITR5.KRITR) 03JAN19

CHARLOTTE, NORTH CAROLINA

CHARLOTTE/DOUGLAS INTL (CLT)

SE-2, 02 JAN 2020 to 30 JAN 2020

SE-2, 02 JAN 2020 to 30 JAN 2020

KRITR FIVE DEPARTURE (RNAV)



DEPARTURE ROUTE DESCRIPTION SEE ADDITIONAL REQUIREMENTS ON AAUP

TAKEOFF RWY 5: Climb heading 055° to 1260, then on heading 055° or as assigned by ATC, expect RADAR vectors to JDEAN, thence. . . .

TAKEOFF RWYS 18C/L: Climb heading 183° to 1260, then on heading 183° or as assigned by ATC, expect RADAR vectors to JDEAN, thence. . . .

TAKEOFF RWY 18R: Climb heading 183° to 1260, then on heading 200° or as assigned by ATC, expect RADAR vectors to JDEAN, thence. . . .

TAKEOFF RWY 23: Climb heading 235° to 1260, then on heading 235° or as assigned by ATC, expect RADAR vectors to JDEAN, thence. . . .

TAKEOFF RWY 36C: Climb heading 003° to 1260, then on heading 330° or as assigned by ATC, expect RADAR vectors to JDEAN, thence. . . .

TAKEOFF RWY 36L: Climb heading 003° to 1260, then on heading 315° or as assigned by ATC, expect RADAR vectors to JDEAN, thence. . . .

TAKEOFF RWY 36R: Climb heading 003° to 1260, then on heading 025° or as assigned by ATC, expect RADAR vectors to JDEAN, thence. . . .

. . . .on track 022° to KRITR, then on assigned transition. Maintain 8000.

Expect clearance to filed altitude within 10 minutes after departure.

FILDS TRANSITION (KRITR5.FILDS)

SMIAM TRANSITION (KRITR5.SMIAM)

SE-2, 02 JAN 2020 to 30 JAN 2020

SE-2, 02 JAN 2020 to 30 JAN 2020