

LOC/DME I-PVY 111.55 Chan 52 (Y)	APP CRS 238°	Rwy Idg 9000 TDZE 780 Apt Elev 799
--	------------------------	---

ILS RWY 24R (CAT II & III)

CLEVELAND-HOPKINS INTL (CLE)

RNAV 1. From LLROY and BUDRW: RNAV 1-DME/DME/IRU or GPS required for procedure entry. Aircraft not DME/DME/IRU or GPS equipped - RADAR required for procedure entry.

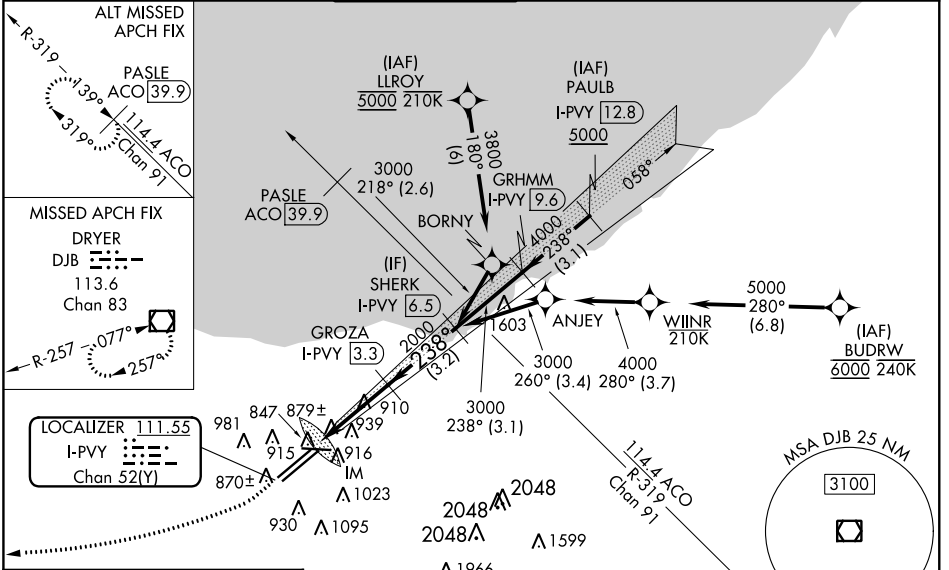
DME required.

▼ RVR 1000 authorized with specific OPSEC, MSPEC, or LOA approval and use of autoland or HUD to touchdown. Simultaneous approach authorized. Simultaneous operations require use of vertical guidance; maintain last assigned altitude until established on glideslope.

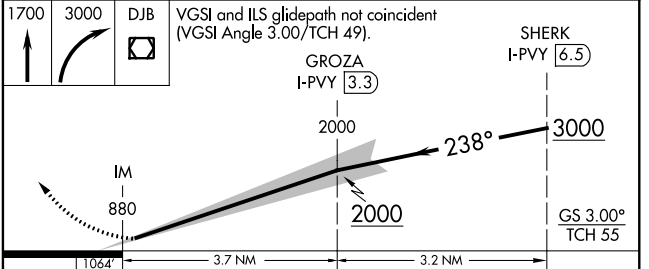
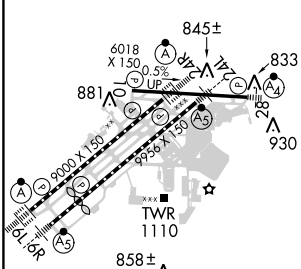
ALSF-2

MISSED APPROACH: Climb to 1700 then climbing right turn to 3000 direct DJB VOR/DME and hold.

D-ATIS ARR 127.85 DEP 132.375	CLEVELAND APP CON 124.0 354.025	CLEVELAND TOWER 124.5 273.45	GND CON 121.7 273.45	CLNC DEL 125.05 273.45	CPDLC
---	---	--	--------------------------------	----------------------------------	-------



ELEV 799	D	TDZE 780
----------	----------	----------



CATEGORY	A	B	C	D
S-ILS 24R	CAT II RA 100/12		100 DA 880	
S-ILS 24R	CAT III RVR 06			

CATEGORY II & III ILS - SPECIAL AIRCREW & AIRCRAFT CERTIFICATION REQUIRED

REIL Rwy 10
TDZ/CL Rwy 6L, 6R, 24L and 24R
HIRL Rwy 6L-24R, 6R-24L and 10-28

EC-2, 11 OCT 2018 to 08 NOV 2018

EC-2, 11 OCT 2018 to 08 NOV 2018