

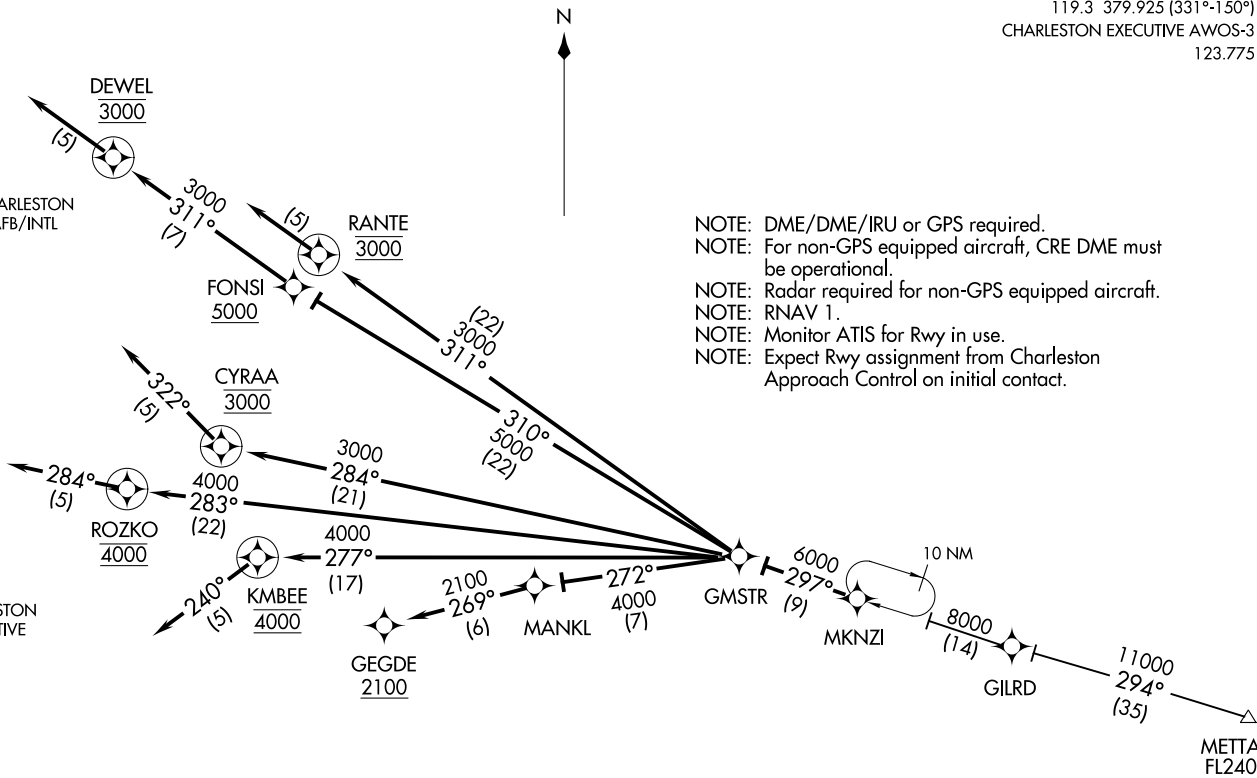
CHARLESTON AFB/INTL ATIS  
124.75  
CHARLESTON AFB/INTL APP CON  
119.3 379.925 (331°-150°)  
CHARLESTON EXECUTIVE AWOS-3  
123.775

(MKNZI,MKNZ11) 16035

ST-76 (FAA)

CHARLESTON, SOUTH CAROLINA

- NOTE: DME/DME/IRU or GPS required.
- NOTE: For non-GPS equipped aircraft, CRE DME must be operational.
- NOTE: Radar required for non-GPS equipped aircraft.
- NOTE: RNAV 1.
- NOTE: Monitor ATIS for Rwy in use.
- NOTE: Expect Rwy assignment from Charleston Approach Control on initial contact.



MKNZI ONE ARRIVAL (RNAV)  
(MKNZI,MKNZ11) 25AUG11

CHARLESTON, SOUTH CAROLINA

NOTE: Chart not to scale.

(NARRATIVE ON FOLLOWING PAGE)

ARRIVAL ROUTE DESCRIPTION

METTA TRANSITION (METTA.MKNZI1):

From over MKNZI on track 297° to GMSTR. Thence assigned runway transition . . .

LANDING CHARLESTON AFB/INTL:

. . . Rwy 3: From over GMSTR on track 283° to ROZKO, cross ROZKO at 4000, then on heading 284°, expect radar vectors to final approach course.

. . . Rwy 15: From over GMSTR on track 310° to FONSI, cross FONSI at or above 5000, then on track 311° to DEWEL, cross DEWEL at 3000, then on heading 311°, expect radar vectors to final approach course.

. . . Rwy 21: From over GMSTR on track 311° to RANTE, cross RANTE at 3000, then on heading 311°, expect radar vectors to final approach course.

. . . Rwy 33: From over GMSTR on track 284° to CYRAA, cross CYRAA at 3000, then on heading 322°, expect radar vectors to final approach course.

LANDING CHARLESTON EXECUTIVE:

. . . Rwy 4 and 9: From over GMSTR on track 277° to KMBEE, cross KMBEE at 4000, then on heading 240°, expect radar vectors to final approach course.

. . . Rwy 27: From over GMSTR on track 272° to MANKL, then on track 269° to GEGDE, cross GEGDE at or above 2100, expect RNAV Rwy 27 approach.

SE-2: 06 DEC 2018 to 03 JAN 2019

SE-2: 06 DEC 2018 to 03 JAN 2019