

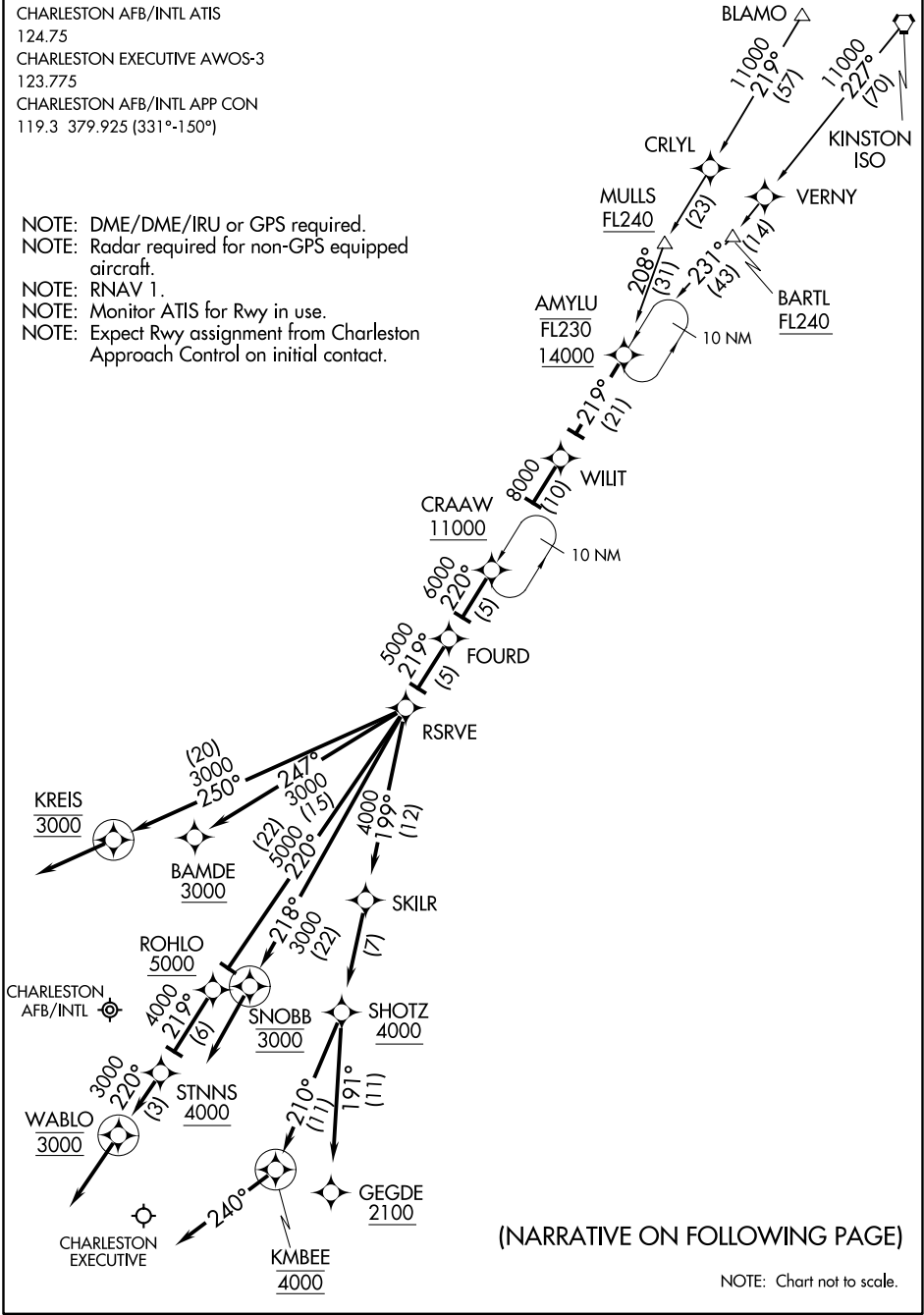
AMYLU TWO ARRIVAL (RNAV)

ST-76 (FAA)

CHARLESTON, SOUTH CAROLINA

CHARLESTON AFB/INTL ATIS
 124.75
 CHARLESTON EXECUTIVE AWOS-3
 123.775
 CHARLESTON AFB/INTL APP CON
 119.3 379.925 (331°-150°)

- NOTE: DME/DME/IRU or GPS required.
- NOTE: Radar required for non-GPS equipped aircraft.
- NOTE: RNAV 1.
- NOTE: Monitor ATIS for Rwy in use.
- NOTE: Expect Rwy assignment from Charleston Approach Control on initial contact.



(NARRATIVE ON FOLLOWING PAGE)

NOTE: Chart not to scale.

SE-2: 19 JUL 2018 to 16 AUG 2018

SE-2: 19 JUL 2018 to 16 AUG 2018

ARRIVAL ROUTE DESCRIPTION

- BARTL TRANSITION (BARTL.AMYLU2):
- BLAMO TRANSITION (BLAMO.AMYLU2):
- KINSTON TRANSITION (ISO.AMYLU2):
- MULLS TRANSITION (MULLS.AMYLU2):

From over AMYL.U on track 219° to WILIT, then on track 219° to CRAAW, then on track 220° to FOURD, then on track 219° to RSRVE. Thence assigned Rwy transitions. . . .

LANDING CHARLESTON AFB/INTL:

Rwy 3: From over RSRVE on track 220° to ROHLO, then on track 219° to STNNS, then on track 220° to WABLO, then on heading 220°, expect radar vectors to final approach course.

Rwy 15: From over RSRVE on track 250° to KREIS, then on heading 250°, expect radar vectors to final approach course.

Rwy 21: From over RSRVE on track 247° to BAMDE, expect RNAV (GPS) Y Rwy 21 approach.

Rwy 33: From over RSRVE on track 218° to SNOBB, then on heading 218°, expect radar vectors to final approach course.

LANDING CHARLESTON EXECUTIVE:

Rwys 4 and 9: From over RSRVE on track 199° to SKILR, then on track 199° to SHOTZ, then on track 210° to KMBEE, then on heading 240°, expect radar vectors to final approach course.

Rwy 27: From over RSRVE on track 199° to SKILR, then on track 199° to SHOTZ, then on track 191° to GEGDE, expect RNAV (GPS) Y Rwy 27 approach.

SE-2, 19 JUL 2018 to 16 AUG 2018

SE-2, 19 JUL 2018 to 16 AUG 2018