

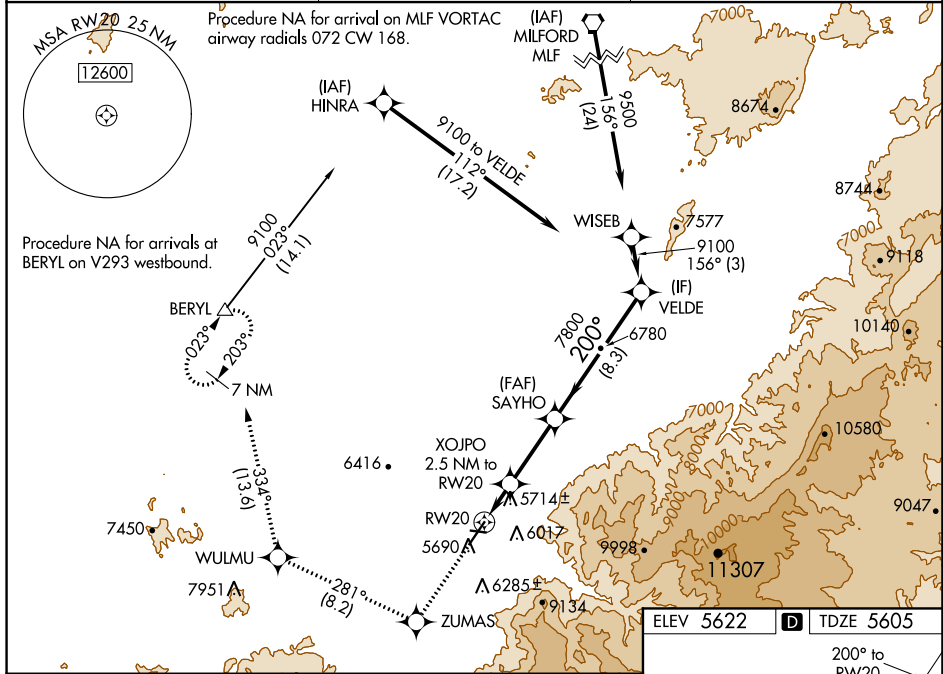
WAAS CH 72640 W20A	APP CRS 200°	Rwy Idg TDZE Apt Elev	8653 5605 5622
----------------------------------------	------------------------	-----------------------------	-------------------------------------------

RNAV (GPS) RWY 20

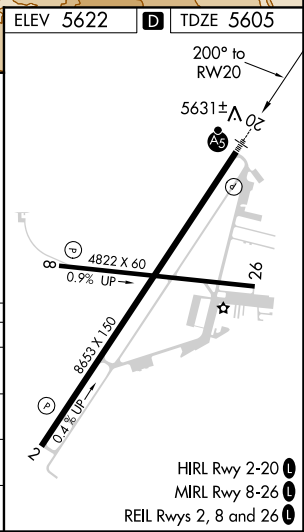
CEDAR CITY RGNL (CDC)

RNP APCH.	MALSR 	MISSED APPROACH: Climb to 9800 direct ZUMAS and on track 281° to WULMU and on track 334° to BERYL and hold.
<p>⚠ Circling NA east of Rwy 2-20. For uncompensated Baro-VNAV systems, LNAV/VNAV NA below -19°C or above 54°C. For inop ALS, increase LNAV/VNAV all Cats visibility to 1½ SM and LNAV Cats C/D visibility to 1½ SM.</p>		

ASOS 119.025	SALT LAKE CITY CENTER 125.575 379.275	UNICOM 123.0 (CTAF) 0
------------------------	-------------------------------------------------	---------------------------------



9800	ZUMAS	WULMU	BERYL	SAYHO	VELE
	tr 281°	tr 334°			
*LNAV only		XOJPO 2.5 NM to RW20		7800	9100
RW20		*1.6 NM to RW20		6440*	GP 3.00° TCH 47
	-1.6 NM	0.9 NM	4.3 NM	8.3 NM	



CATEGORY	A	B	C	D
LPV DA		5825-½	220 (300-½)	
LNAV/VNAV DA		6015-¾	410 (400-¾)	
LNAV MDA	6180-½	575 (600-½)	6180-¼	575 (600-¼)
C CIRCLING	6180-1	558 (600-1)	6180-1½	6180-2 558 (600-2)

SW-4, 20 MAY 2021 to 17 JUN 2021

SW-4, 20 MAY 2021 to 17 JUN 2021