

APP CRS 303°	Rwy Idg TDZE Apt Elev	8994 4462 4473
------------------------	-----------------------------	---

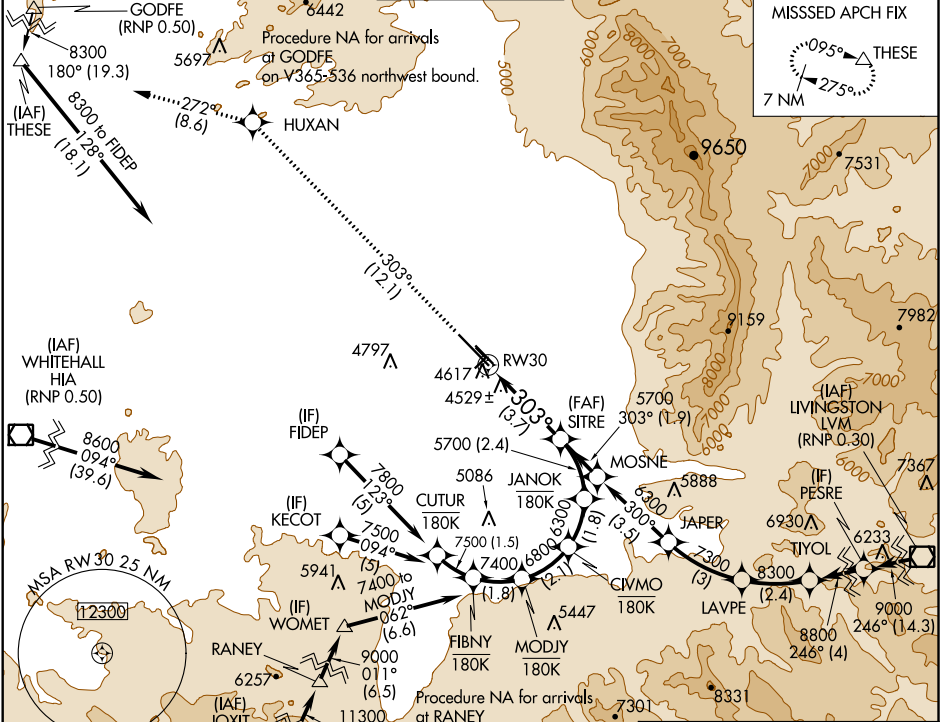
RNAV (RNP) RWY 30

BOZEMAN YELLOWSTONE INTL (BZN)

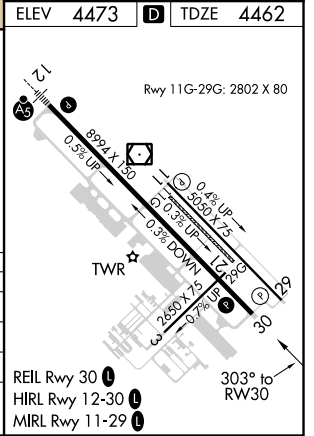
⚠ For uncompensated Baro-VNAV systems, procedure NA below -24°C (-11°F) or above 51°C (124°F). When VGSI inoperative, procedure NA at night. RF Required. GPS required. *Missed approach requires minimum climb of 350 feet per NM to 6000.

MISSED APPROACH: Climb to 8300 on track 303° to HUXAN and on track 272° to THESE and hold, continue climb-in-hold to 8300.

ATIS 135.425	BIG SKY APP CON * 118.975 226.675	BOZEMAN TOWER* 118.2 (CTAF) 0	GND CON 121.8	UNICOM 122.95
------------------------	---	---	-------------------------	-------------------------



8300	HUXAN	tr 272°	THESE	
↑	⬠		△	
tr 303°				
See planview for multiple IF locations.				
CATEGORY	A	B	C	D
RNP 0.11* DA		4742-1	280 (300-1)	
RNP 0.20 DA		4824-1 ¼	362 (400-1¼)	
RNP 0.30 DA		4881-1 ½	419 (500-1½)	



AUTHORIZATION REQUIRED

NW-1, 25 FEB 2021 to 25 MAR 2021

NW-1, 25 FEB 2021 to 25 MAR 2021