

RNAV (RNP) Z RWY 28

BALTIMORE/WASHINGTON INTL THURGOOD MARSHALL (BWI)

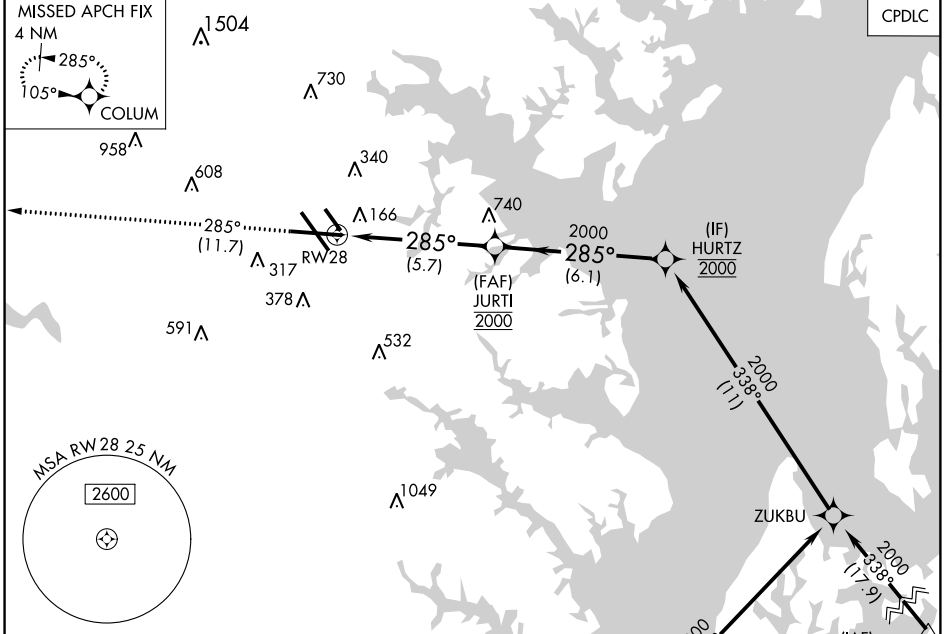
APP CRS 285°	Rwy ldg TDZE Apt Elev	9802 143 143
------------------------	-----------------------------	---

▼ For uncompensated Baro-VNAV systems, procedure NA below -12°C (11°F) or above 54°C (130°F). GPS Required. For inoperative MALSR, increase RNP 0.30 all Cats visibility to 1¼.

MALSR 

MISSED APPROACH: Climb to 2500 on track 285° to COLUM and hold.

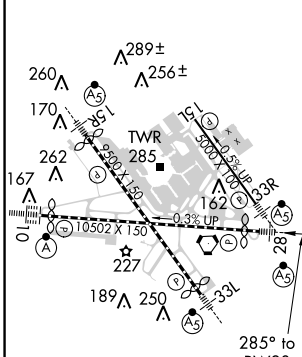
D-ATIS 115.1 127.8	POTOMAC APP CON (020°-100°) 119.7 290.475 (131°-180°) (101°-130°) 128.7 307.9 (181°-019°)	BALTIMORE TOWER 119.4 257.8	GND CON 121.9	CLNC DEL 118.05
------------------------------	---	---------------------------------------	-------------------------	---------------------------



NE-3, 04 JAN 2018 to 01 FEB 2018

NE-3, 04 JAN 2018 to 01 FEB 2018

ELEV 143	D	TDZE 143
----------	----------	----------

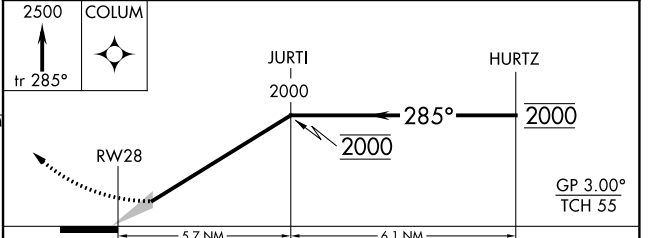


Procedure NA for arrivals at RAVNN on V379 westbound.

(IAF) RAVNN 6000

Procedure NA for arrivals at BILIT on V308 eastbound.

(IAF) BILIT 11000 Max 250 KIAS



CATEGORY	A	B	C	D
RNP 0.30 DA	521/45 378 (400-7%)			

AUTHORIZATION REQUIRED