

APP CRS 105°	Rwy Idg TDZE Apt Elev	9952 143 146
------------------------	-----------------------------	---

RNAV (RNP) Z RWY 10

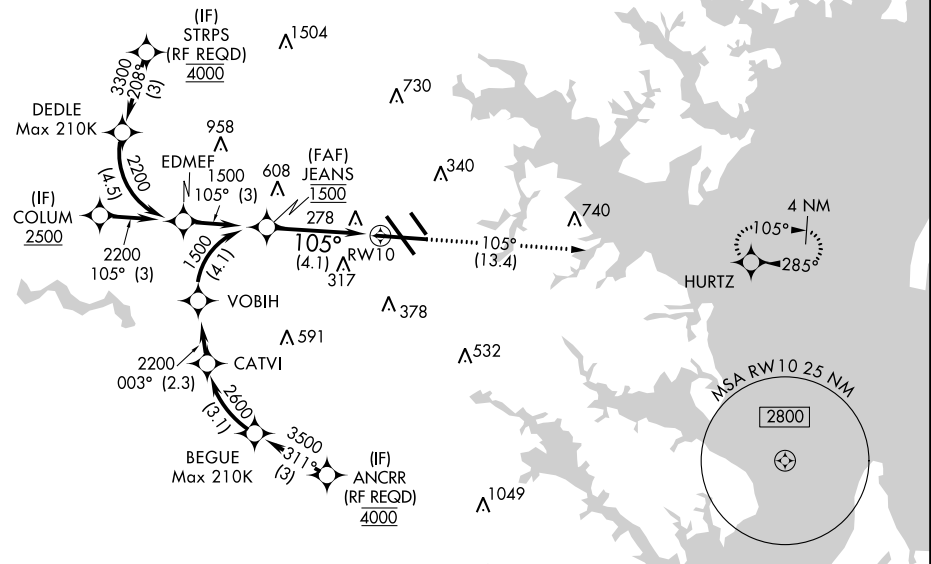
BALTIMORE/WASHINGTON INTL THURGOOD MARSHALL (BWI)

<p>▼ For uncompensated Baro-VNAV systems, procedure NA below -15°C (5°F) or above 54°C (130°F). For inop ALSF-2, increase RNP 0.11 all Cats visibility to 1, increase RNP 0.30 all Cats visibility to 1½. GPS required.</p>	ALSF-2	MISSED APPROACH: Climb to 2500 on track 105° to HURTZ and hold.

D-ATIS 115.1 127.8	POTOMAC APP CON (020°-100°) 119.7 290.475 (131°-180°) (101°-130°) 128.7 307.9 (181°-019°)	BALTIMORE TOWER 119.4 257.8	GND CON 121.9	CLNC DEL 118.05
------------------------------	---	---------------------------------------	-------------------------	---------------------------

RADAR REQUIRED

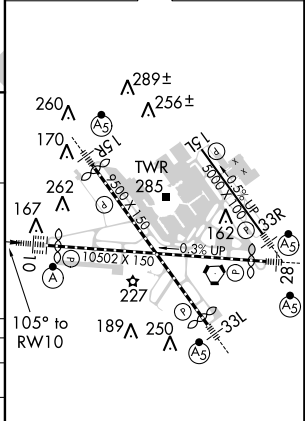
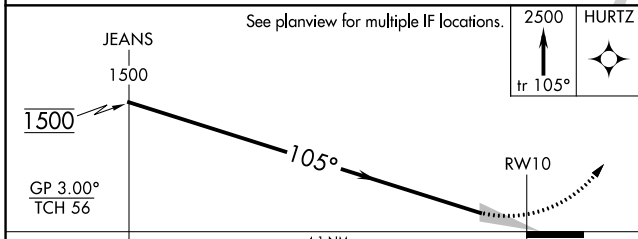
△ 1549



NE-3, 21 JUN 2018 to 19 JUL 2018

NE-3, 21 JUN 2018 to 19 JUL 2018

ELEV 146	D	TDZE 143
----------	----------	----------



CATEGORY	A	B	C	D
RNP 0.11 DA		448/24	305 (300-½)	
RNP 0.30 DA		626/60	483 (500-1¼)	

AUTHORIZATION REQUIRED

TDZ/CL Rwsy 10 and 33L
REIL Rwsy 15L and 33R
HIRL all Rwsy