

WAAS CH 66007 W15B	APP CRS 155°	Rwy Idg TDZE 138 Apt Elev 143	8300
--	------------------------	---	-------------

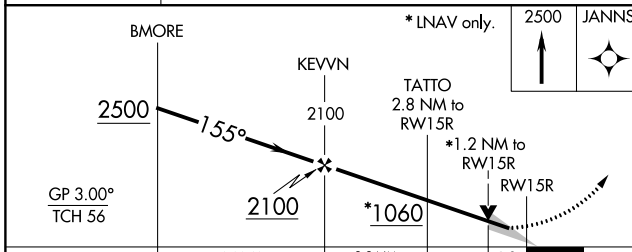
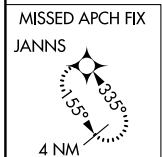
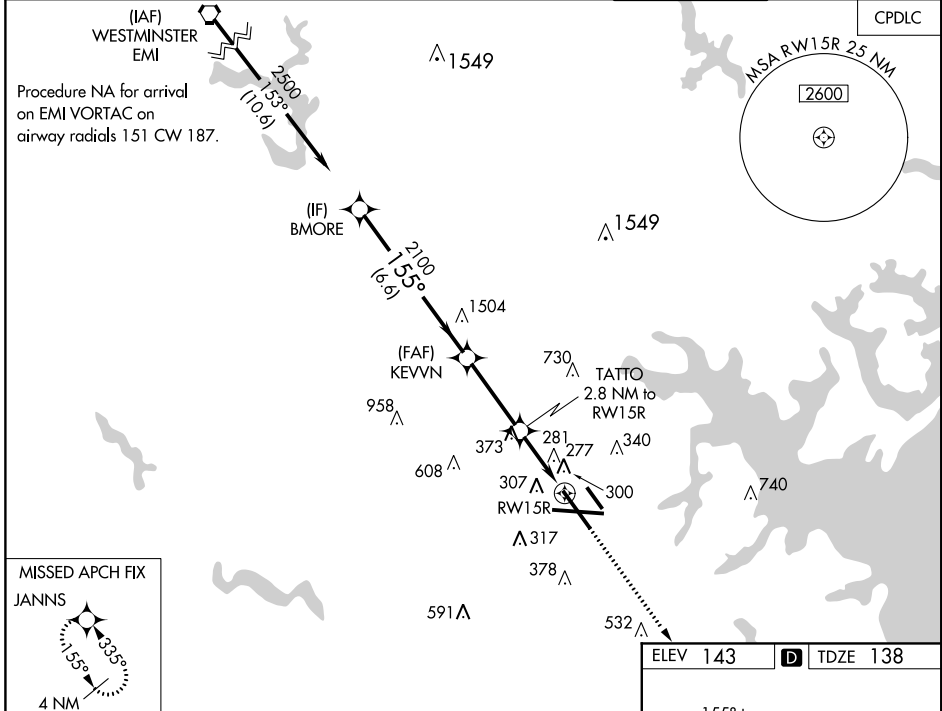
RNAV (GPS) Y RWY 15R

BALTIMORE/WASHINGTON INTL THURGOOD MARSHALL (BWI)

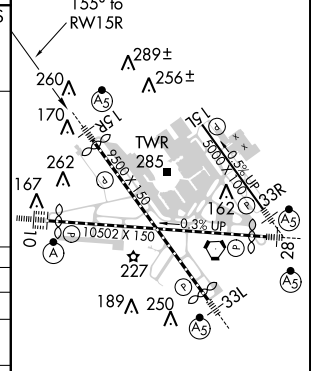
⚠ For uncompensated Baro-VNAV systems, LNAV/VNAV NA below -12°C (11°F) or above 54°C (130°F). For inop MALS, increase LNAV/VNAV all Cats visibility to 1 3/4. DME/DME RNP-0.3 NA.
**RVR 1800 authorized with use of FD or AP or HUD to DA.

MALS 	MISSED APPROACH: Climb to 2500 direct JANN5 and hold.
----------	---

D-ATIS 115.1 127.8	POTOMAC APP CON (020°-100°) 119.0 282.275 (101°-130°) 124.55 317.425	(131°-180°) 119.7 290.475 (181°-019°) 128.7 307.9	BALTIMORE TOWER 119.4 257.8	GND CON 121.9	CLNC DEL 118.05
------------------------------	--	--	---------------------------------------	-------------------------	---------------------------



ELEV 143	D TDZE 138
----------	-------------------



CATEGORY	A	B	C	D
LPV DA	**338/24 200 (200-1/2)			
LNAV/VNAV DA	557/46 419 (500-1)			
LNAV MDA	560/24	422 (500-1/2)	560/40	422 (500-3/4)
C CIRCLING	640-1 497 (500-1)	660-1 517 (600-1)	700-1 1/2 557 (600-1 1/2)	880-2 1/4 737 (800-2 1/4)

TDZ/CL Rwy 10 and 33L
REIL Rwy 15L and 33R
HIRL all rwy

RNAV (GPS) Y RWY 15R

NE-3, 26 APR 2018 to 24 MAY 2018

NE-3, 26 APR 2018 to 24 MAY 2018