

WAAS CH 53707 W10A	APP CRS 105°	Rwy Idg TDZE 143 Apt Elev 146	9952
--	------------------------	---	-------------

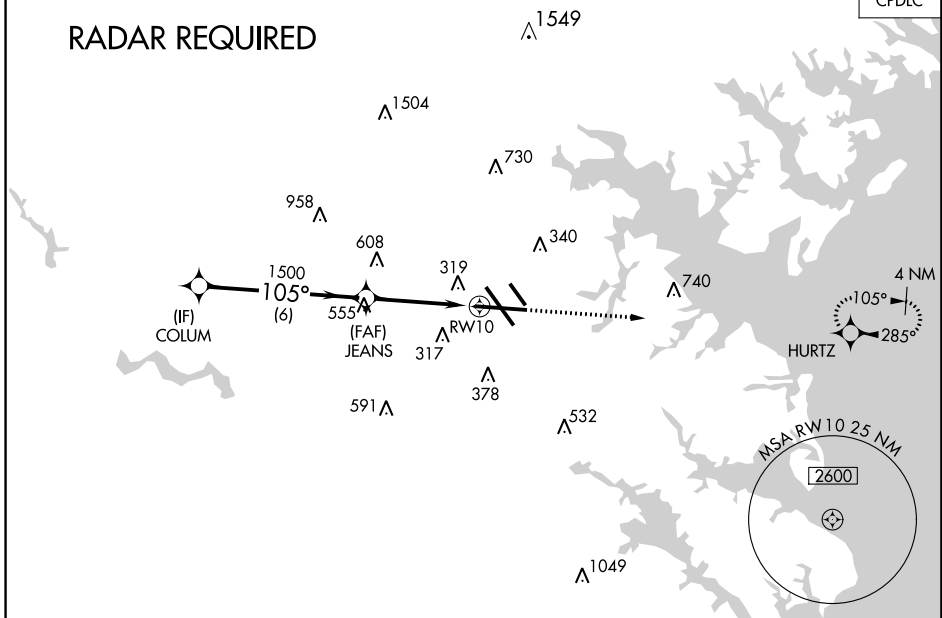
RNAV (GPS) Y RWY 10

BALTIMORE/WASHINGTON INTL THURGOOD MARSHALL (BWI)

<p>For un compensated Baro-VNAV systems, LNAV/VNAV NA below -15°C (5°F) or above 54°C (130°F). DME/DME RNP- 0.3 NA.</p>		MISSED APPROACH: Climb to 2500 direct HURTZ and hold.	

D-ATIS 115.1 127.8	POTOMAC APP CON (020°-100°) 119.7 290.475 (131°-180°) (101°-130°) 128.7 307.9 (181°-019°)	BALTIMORE TOWER 119.4 257.8	GND CON 121.9	CLNC DEL 118.05
------------------------------	---	---------------------------------------	-------------------------	---------------------------

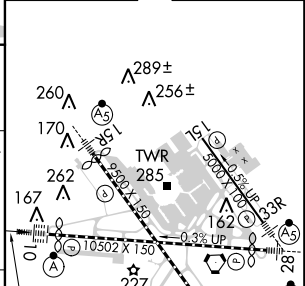
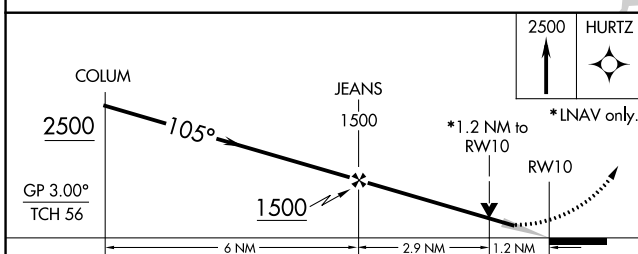
RADAR REQUIRED



NE-3, 24 MAY 2018 to 21 JUN 2018

NE-3, 24 MAY 2018 to 21 JUN 2018

ELEV 146	TDZE 143
----------	----------



CATEGORY	A	B	C	D
LPV DA		343/18	200 (200-1/2)	
LNAV/VNAV DA		580/50	437 (500-1)	
LNAV MDA	580/24	437 (500-1/2)	580/40	437 (500-3/4)
CIRCLING	640-1	494 (500-1)	640-1 1/2 494 (500-1 1/2)	740-2 594 (600-2)

TDZ/CL Rwy 10 and 33L
REIL Rwy 15L and 33R
HIRL all rwy