

WAAS CH <b>40108</b> <b>W15A</b>	APP CRS <b>155°</b>	Rwy Idg TDZE Apt Elev	<b>5000</b> <b>142</b> <b>143</b>
----------------------------------------	------------------------	-----------------------------	-----------------------------------------

BALTIMORE/  
WASHINGTON INTL THURGOOD MARSHALL (BWI) **RNAV (GPS) RWY 15L**

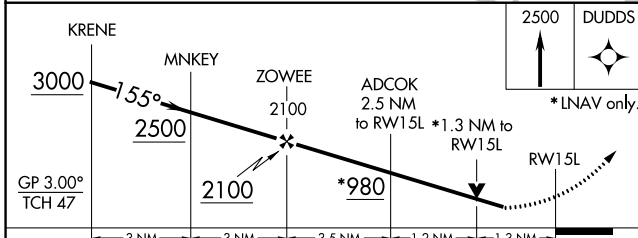
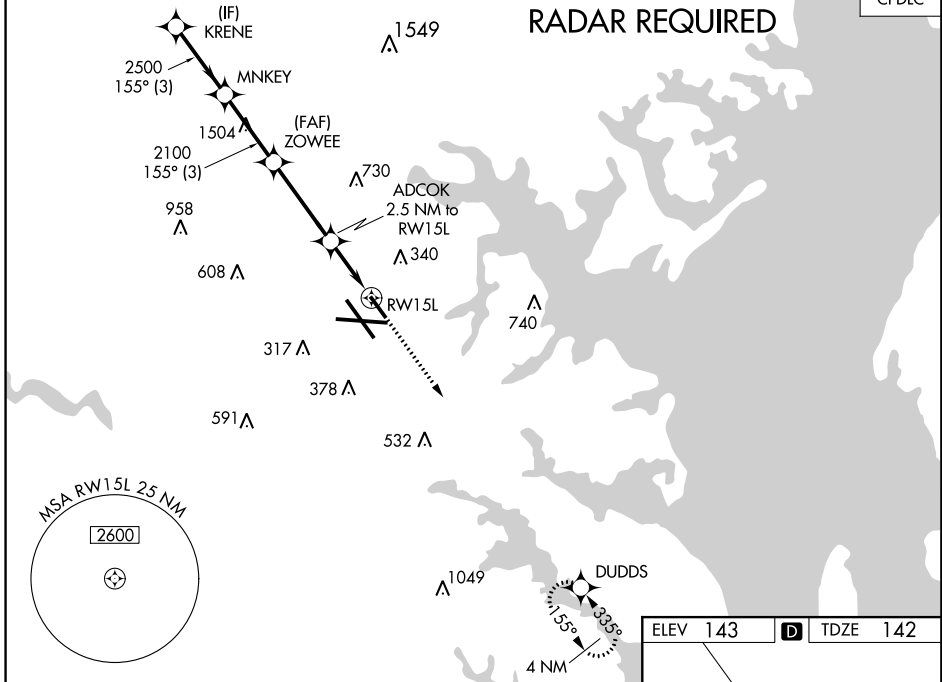
▼ For uncompensated Baro-VNAV systems, LNAV/VNAV NA below -13°C (9°F) or above 54°C (130°F). DME/DME RNP-0.3 NA. Helicopter visibility reduction below RVR 4000 NA. Simultaneous approach authorized. Use of FD or AP providing RNAV track guidance required during simultaneous operations. LNAV procedure NA during simultaneous operations.

MISSED APPROACH:  
Climb to 2500 direct  
DUDDS and hold.

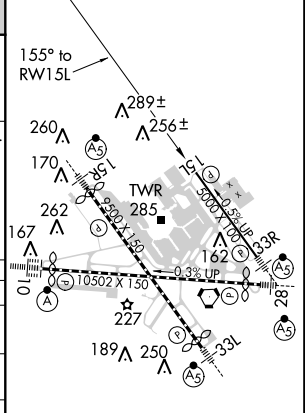
D-ATIS <b>115.1 127.8</b>	POTOMAC APP CON (020°-100°) <b>119.0 282.275</b> (101°-130°) <b>124.55 317.425</b>	(131°-180°) <b>119.7 290.475</b> (181°-019°) <b>128.7 307.9</b>	BALTIMORE TOWER <b>119.4 257.8</b>	GND CON <b>121.9</b>	CLNC DEL <b>118.05</b>
------------------------------	------------------------------------------------------------------------------------------	--------------------------------------------------------------------	---------------------------------------	-------------------------	---------------------------

CPDLC

**RADAR REQUIRED**



ELEV 143	<b>D</b>	TDZE 142
----------	----------	----------



CATEGORY	A	B	C	D
LPV DA	544-1 $\frac{3}{8}$	402 (500-1 $\frac{1}{2}$ )		NA
LNAV/VNAV DA	656-1 $\frac{3}{4}$	514 (600-1 $\frac{1}{4}$ )		NA
LNAV MDA	600/55	458 (500-1 $\frac{1}{4}$ )		NA
<b>C</b> CIRCLING	640-1 497 (500-1)	660-1 517 (600-1)		NA

TDZ/CL Rwy 10 and 33L  
REIL Rwy 15L and 33R  
HIRL all Rwy

NE-3, 01 FEB 2018 to 01 MAR 2018

NE-3, 01 FEB 2018 to 01 MAR 2018