

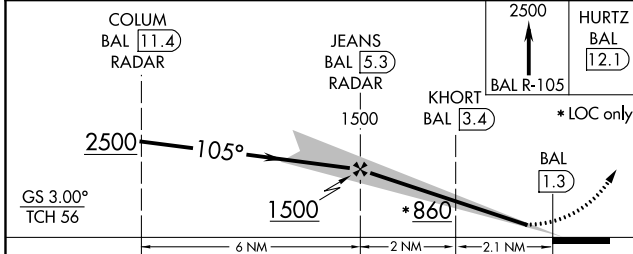
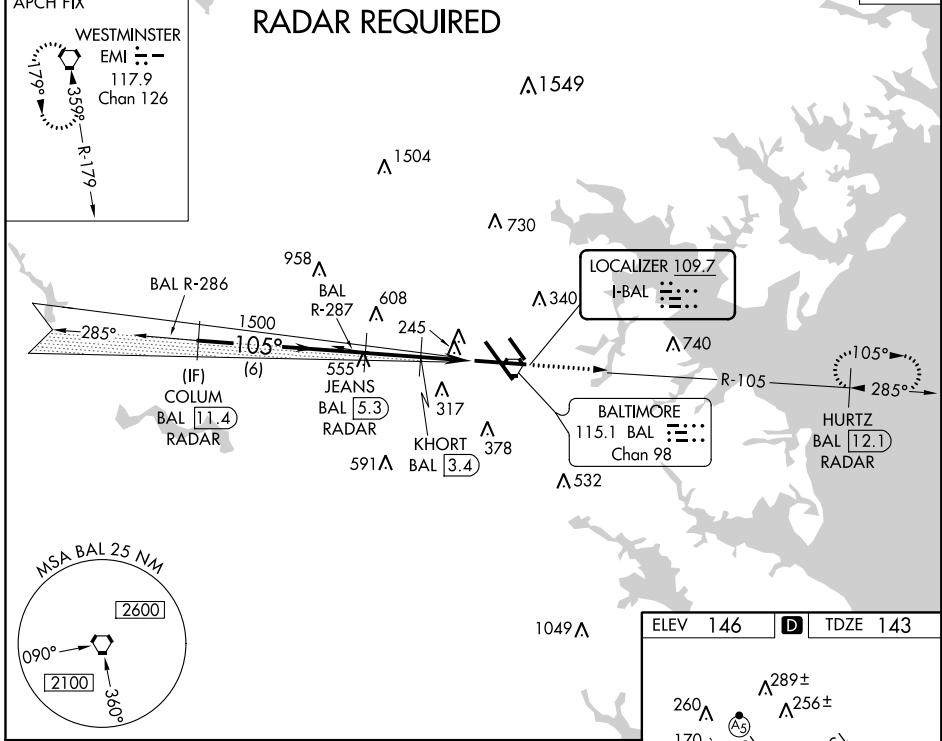
LOC I-BAL 109.7	APP CRS 105°	Rwy Idg 9952 TDZE 143 Apt Elev 146
---------------------------	------------------------	---

BALTIMORE/
WASHINGTON INTL THURGOOD MARSHALL (BWI) **ILS or LOC RWY 10**

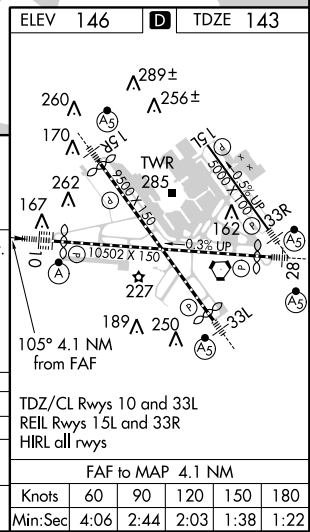
	ALSF-2 	MISSED APPROACH: Climb to 2500 on BAL R-105 to HURTZ/BAL 12.1 DME/RADAR and hold.

D-ATIS 115.1 127.8	POTOMAC APP CON (020°-100°) 119.7 290.475 (131°-180°) (101°-130°) 128.7 307.9 (181°-019°)	BALTIMORE TOWER 119.4 257.8	GND CON 121.9	CLNC DEL 118.05
------------------------------	---	---------------------------------------	-------------------------	---------------------------

ALTERNATE MISSED APCH FIX CPDLC



CATEGORY	A	B	C	D
S-ILS 10	343/18		200 (200-½)	
S-LOC 10	580/24 437 (500-½)		580/40 437 (500-¾)	
CIRCLING	640-1 494 (500-1)		640-1½ 494 (500-1½) 740-2 594 (600-2)	



NE-3, 29 MAR 2018 to 26 APR 2018

NE-3, 29 MAR 2018 to 26 APR 2018