

VOR/DME LWM 112.5 Chan 72	APP CRS 154°	Rwy Idg 4762 TDZE 107 Apt Elev 107
---	------------------------	---

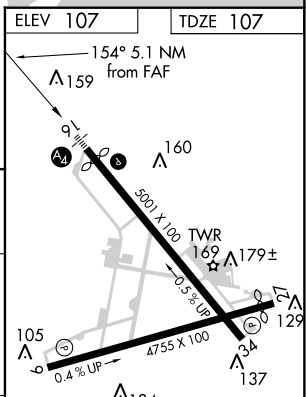
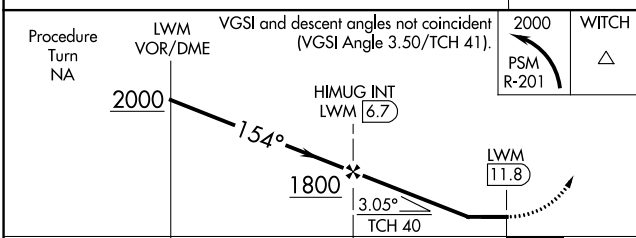
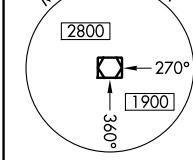
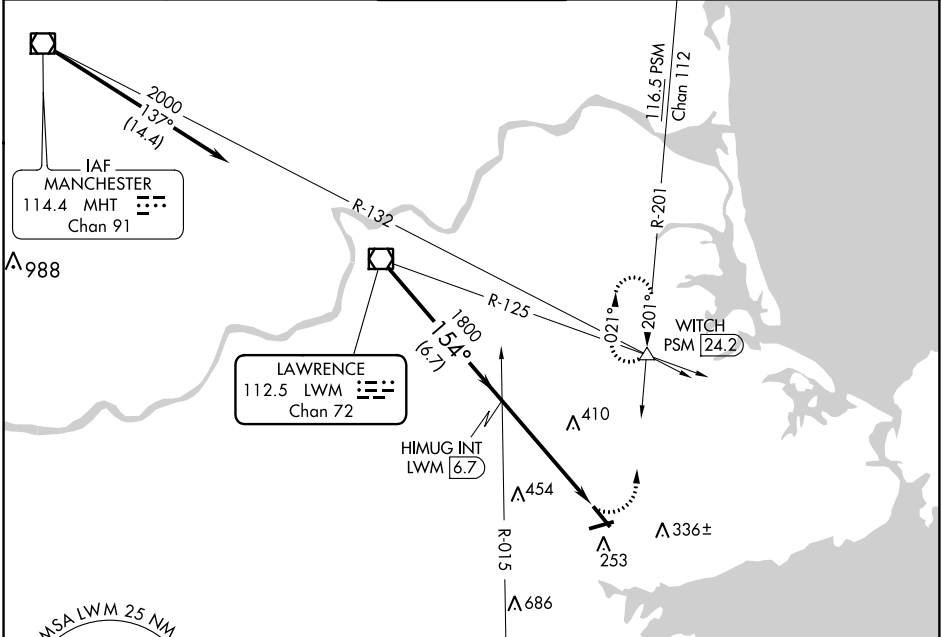
VOR RWY 16

BEVERLY RGNL (BVY)

⚠ Inop table does not apply. When local altimeter setting not received, use Lawrence altimeter setting and increase all MDA 40 feet. Circling Rwy 9 NA at night. Rwy 16 helicopter visibility reduction below 3/4 SM NA. Rwy 9 helicopter visibility reduction below 1 SM NA.

MALS MISSED APPROACH: Climbing left turn to 2000 via PSM R-201 to WITCH INT/24.2 DME and hold.

ATIS 119.2	BOSTON APP CON 124.4 279.6	BEVERLY TOWER* 125.2 (CTAF) 0	GND CON 121.6	UNICOM 122.95
----------------------	--------------------------------------	--	-------------------------	-------------------------



CATEGORY	A	B	C	D
S-16	720-1 613 (700-1)		720-1 1/4 613 (700-1 1/4)	720-2 613 (700-2)
CIRCLING	720-1 613 (700-1)		720-1 1/4 613 (700-1 1/4)	740-2 633 (700-2)

REIL Rwy 34	MIRL Rwy 9-27 and 16-34
FAF to MAP 5.1 NM	
Knots	60 90 120 150 180
Min:Sec	5:06 3:24 2:33 2:02 1:42

NE-1, 21 JUN 2018 to 19 JUL 2018

NE-1, 21 JUN 2018 to 19 JUL 2018