

WAAS CH 97631 W34A	APP CRS 337°	Rwy Idg TDZE Apt Elev	5001 102 107
----------------------------------------	------------------------	-----------------------------	-----------------------------------------

RNAV (GPS) RWY 34

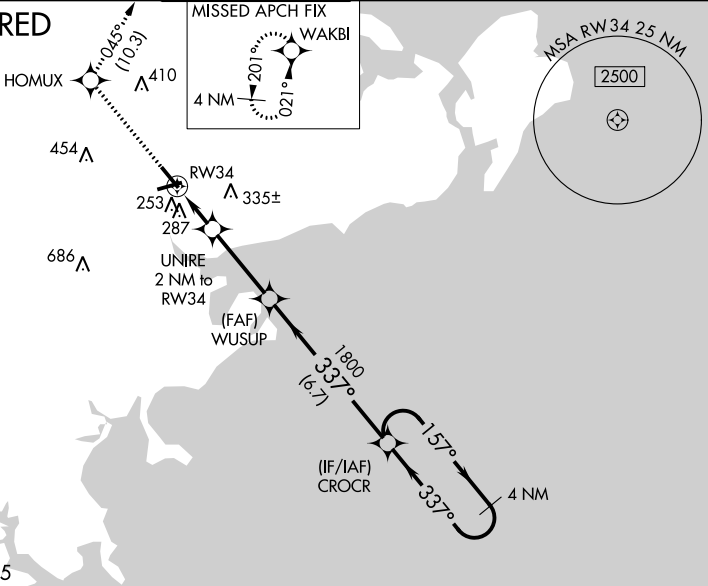
BEVERLY RGNL (BVY)

⚠ For uncompensated Baro-VNAV systems, LNAV/VNAV NA below -18°C (0°F) or above 54°C (130°F). Baro-VNAV and VDP NA when using Lawrence altimeter setting. DME/DME RNP-0.3 NA. When local altimeter setting not received, use Lawrence altimeter setting; increase LPV DA to 416 and LNAV/VNAV DA to 502 and all MDA 40 feet; increase LPV all Cats visibility and LNAV/VNAV all Cats visibility and LNAV Cats C and D visibility 1/8 SM and Circling Cats C and D visibility 1/4 SM. Circling Rwy 9 NA at night. Rwy 34 helicopter visibility reduction below 3/4 SM NA. Rwy 9 helicopter visibility reduction below 1 SM NA.

MISSED APPROACH:
Climb to 2000 direct
HOMUX and on track
045° to WAKBI and hold.

ATIS 119.2	BOSTON APP CON 124.4 279.6	BEVERLY TOWER* 125.2 (CTAF)	GND CON 121.6	UNICOM 122.95
----------------------	--------------------------------------	---------------------------------------	-------------------------	-------------------------

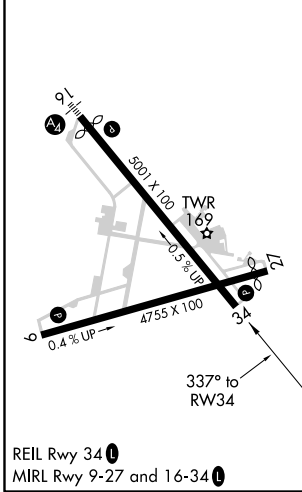
RADAR REQUIRED



NE-1, 04 NOV 2021 to 02 DEC 2021

NE-1, 04 NOV 2021 to 02 DEC 2021

ELEV 107	TDZE 102
-----------------	-----------------



REIL Rwy 34 **Ⓛ**
MIRL Rwy 9-27 and 16-34 **Ⓛ**

2000	HOMUX	tr 045°	WAKBI	CROCR	4 NM Holding Pattern
*LNAV only.					
	UNIRE 2 NM to RW34	WUSUP 1800		157° →	← 337° 2000
	*1.3 NM to RW34	*760	1800	GP 3.00° TCH 54	
	1.3 NM	0.7 NM	3.2 NM	6.7 NM	
CATEGORY	A	B	C	D	
LPV DA	382-1		280 (300-1)		
LNAV/VNAV DA	468-1 1/4		366 (400-1 1/4)		
LNAV MDA	540-1	438 (500-1)	540-1 1/4	438 (500-1 1/4)	
C CIRCLING	600-1	493 (500-1)	820-2	880-2 1/2 773 (800-2 1/2)	