

WAAS CH 61305 W35A	APP CRS 356°	Rwy Idg 6201 TDZE 712 Apt Elev 717
--	------------------------	---

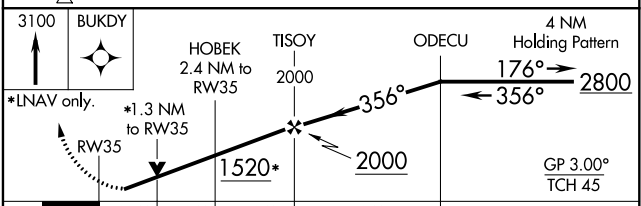
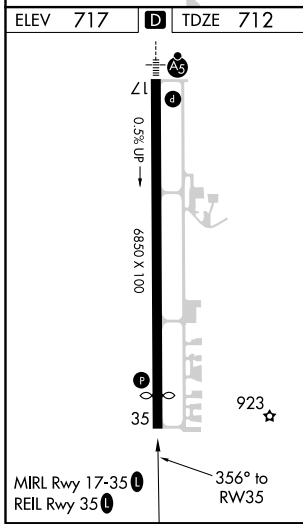
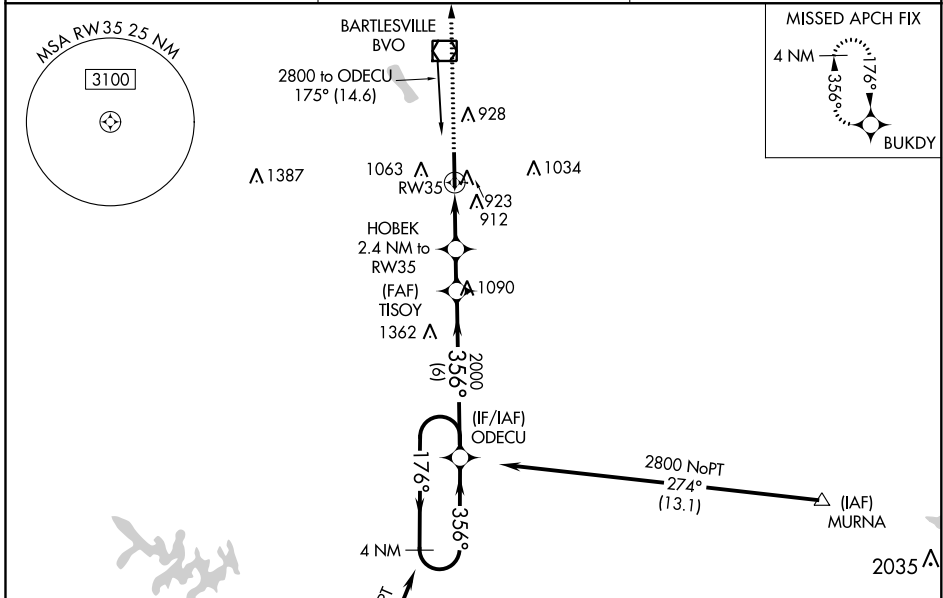
RNAV (GPS) RWY 35

BARTLESVILLE MUNI (BVO)

⚠ For uncompensated Baro-VNAV systems, LNAV/VNAV NA below -18°C (0°F) or above 54°C (130°F).
⚠ DME/DME RNP-0.3 NA. When local altimeter setting not received, use Tulsa Intl altimeter setting and increase all DA 85 feet and all MDA 100 feet, increase LPV all Cats visibility ¼ mile, LNAV/VNAV all Cats visibility ⅓ mile, LNAV and Circling Cat C visibility ¼ mile. Circling NA east of Rwy 17-35. Baro-VNAV and VDP NA when using Tulsa Intl altimeter setting. Helicopter visibility reduction below ¼ SM NA.

MISSED APPROACH:
Climb to 3100 direct BUKDY and hold.

AWOS 132.675	KANSAS CITY CENTER 128.8 354.1	UNICOM 122.825 (CTAF) 0
-------------------------------	---	--



CATEGORY	A	B	C	D
LPV DA	968-7/8	256 (300-7/8)		NA
LNAV/VNAV DA	1161-1 1/2	449 (500-1 1/2)		NA
LNAV MDA	1180-1	468 (500-1)	1180-3/8 468 (500-1 3/8)	NA
C CIRCLING	1380-1	663 (700-1)	1400-2 683 (700-2)	NA

SC-1, 28 JAN 2021 to 25 FEB 2021

SC-1, 28 JAN 2021 to 25 FEB 2021