

WAAS CH <b>81811</b> <b>W32A</b>	APP CRS <b>318°</b>	Rwy Idg TDZE Apt Elev	<b>6121</b> <b>713</b> <b>727</b>
--	------------------------	-----------------------------	---

# RNAV (GPS) RWY 32

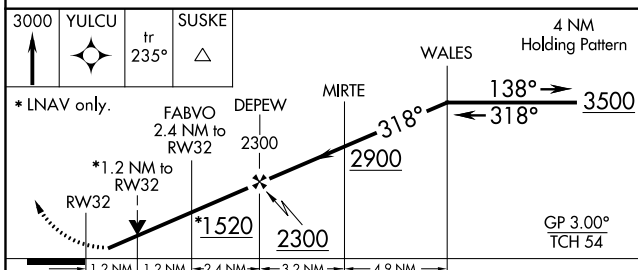
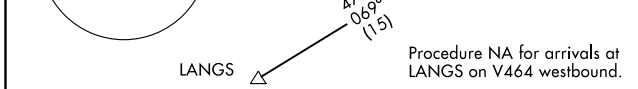
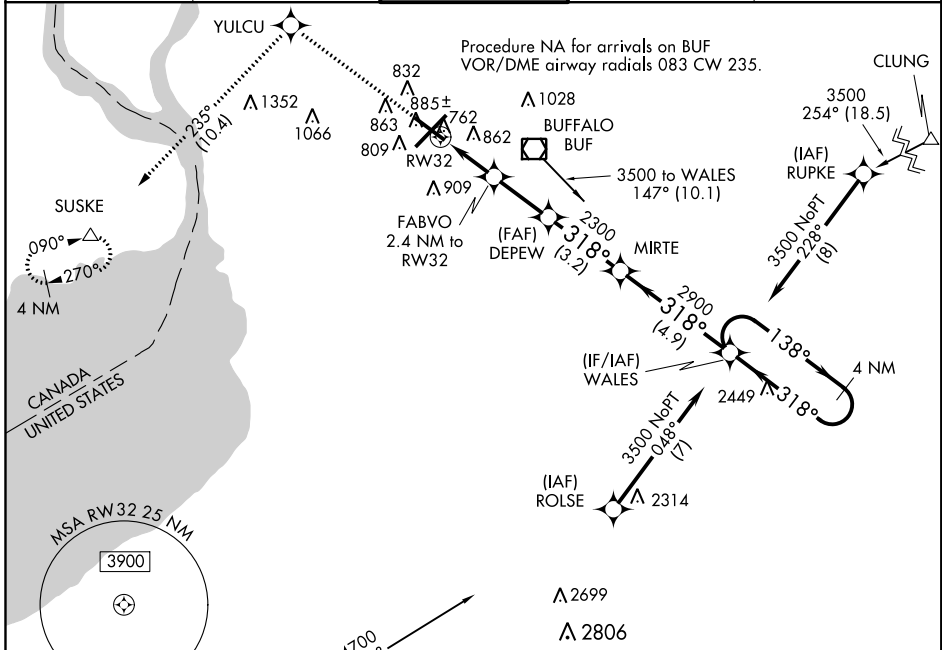
BUFFALO NIAGARA INTL (BUF)

**▼** For uncompensated Baro-VNAV systems LNAV/VNAV NA below -17°C (2°F) or above 39°C (102°F). DME/DME RNP-0.3 NA. Visibility reduction by helicopters NA. For inop MALSR, increase LNAV/VNAV, all Cats visibility to 1½ mile. Inop table does not apply to LPV all Cats.



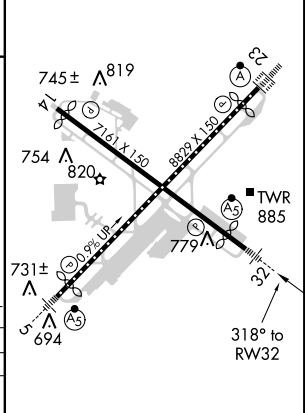
**MISSED APPROACH:** Climb to 3000 direct YULCU on track 235° to SUSKE and hold.

D-ATIS <b>135.35</b>	BUFFALO APP CON <b>126.15 263.125</b>	<b>BUFFALO TOWER</b> <b>120.5 257.8</b>	GND CON <b>133.2 257.8</b>	CLNC DEL <b>124.7 257.8</b>
-------------------------	--	--	-------------------------------	--------------------------------



CATEGORY	A	B	C	D
LPV DA		913-¾	200 (200-¾)	
LNAV/VNAV DA		1092-¾	379 (400-¾)	
LNAV MDA		1140-¾	427 (500-¾)	
CIRCLING	1200-1	473 (500-1)	1200-1½	1280-2 553 (600-2)

ELEV 727	<b>D</b>	TDZE 713
----------	----------	----------



REIL Rwy 14  
TDZ/CL Rlys 5 and 23  
HIRL Rlys 5-23 and 14-32

NE-2, 29 MAR 2018 to 26 APR 2018

NE-2, 29 MAR 2018 to 26 APR 2018