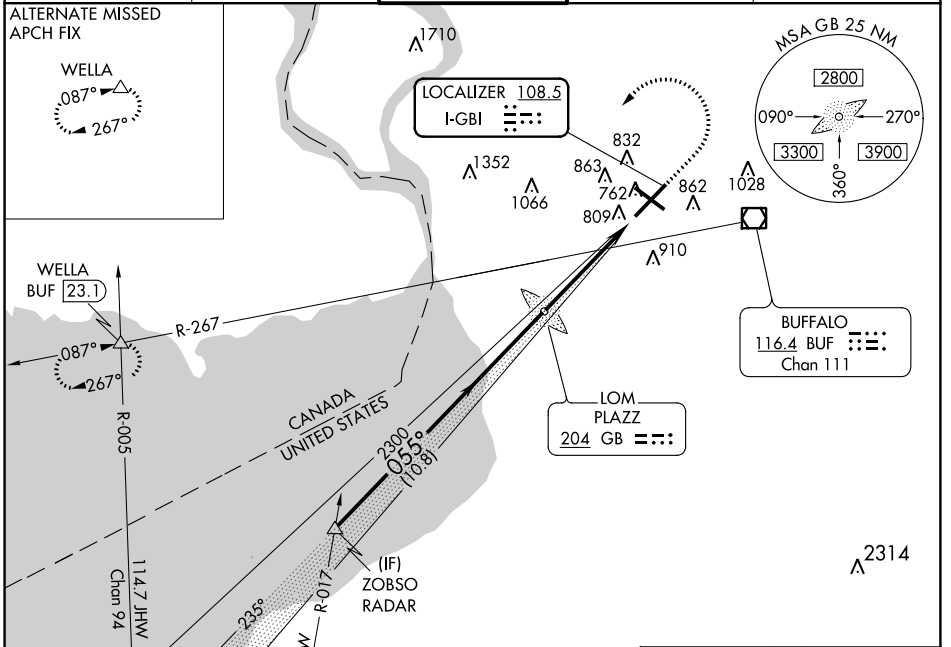


LOC I-GBI <b>108.5</b>	APP CRS <b>055°</b>	Rwy Idg TDZE Apt Elev	<b>7758</b> <b>708</b> <b>727</b>
---------------------------	------------------------	-----------------------------	---

**ILS or LOC RWY 5**  
BUFFALO NIAGARA INTL (BUF)

	MALS R 	MISSED APPROACH: Climb to 1200 then climbing left turn to 3000 on heading 245° and BUF VOR/DME R-267 to WELLA INT/BUF 23.1 DME and hold.
--	------------	--

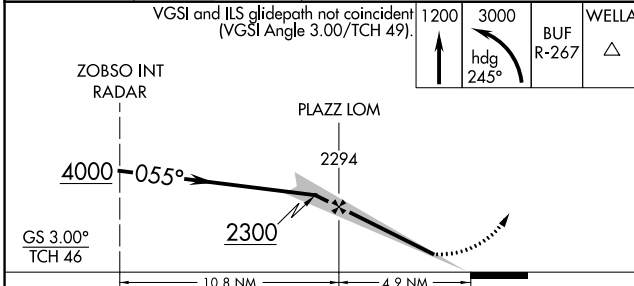
D-ATIS <b>135.35</b>	BUFFALO APP CON <b>126.15 263.125</b>	BUFFALO TOWER <b>120.5 257.8</b>	GND CON <b>133.2 257.8</b>	CLNC DEL <b>124.7 257.8</b>
-------------------------	--	-------------------------------------	-------------------------------	--------------------------------



NE-2. 01 MAR 2018 to 29 MAR 2018

NE-2. 01 MAR 2018 to 29 MAR 2018

ELEV 727		TDZE 708
----------	--	----------



CATEGORY	A	B	C	D
S-ILS 5	908/18 200 (200-½)			
S-LOC 5	1100/24	392 (400-½)	1100/40	392 (400-¾)
CIRCLING	1200-1	473 (500-1)	1220-1½	1340-2
			493 (500-1½)	613 (700-2)

