

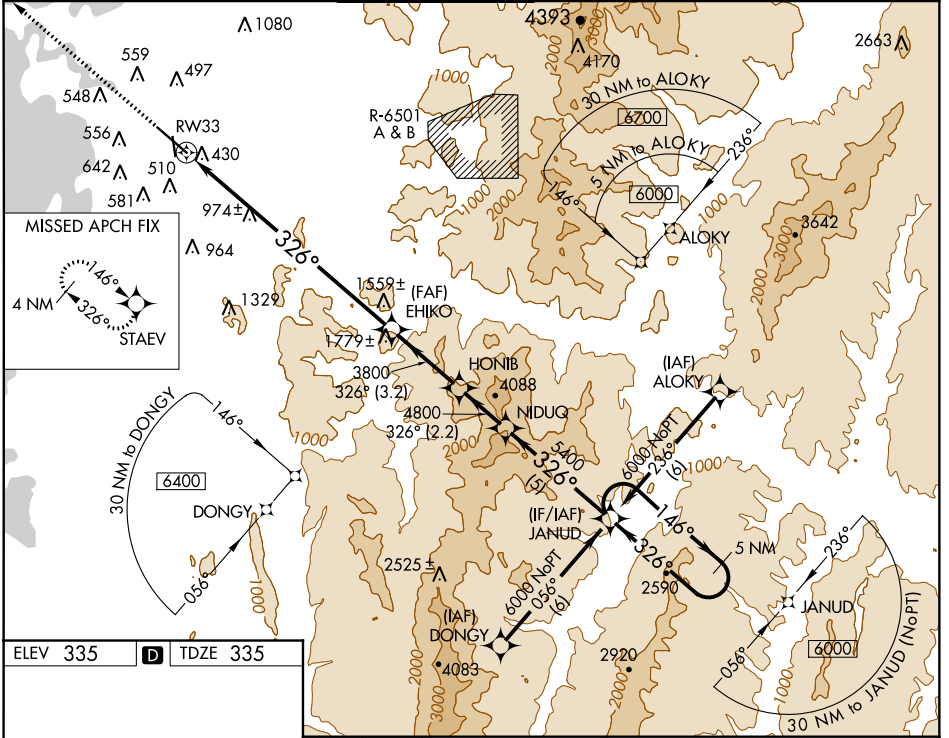
WAAS CH 65812 W33A	APP CRS 326°	Rwy Idg 7819 TDZE 335 Apt Elev 335
--	------------------------	---

RNAV (GPS) Z RWY 33

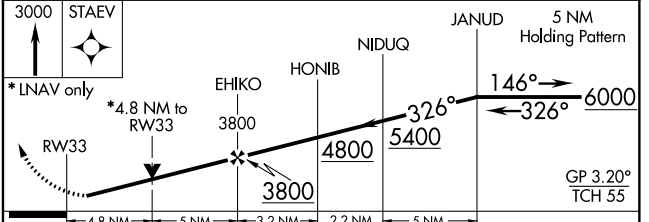
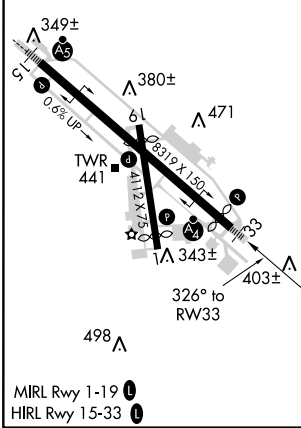
BURLINGTON INTL (BTV)

	Circling to Rwy 1 NA at night. Inoperative table does not apply. For uncompensated Baro-VNAV systems, LNAV/VNAV NA below -1.5°C (5°F) or above 54°C (130°F). DME/DME RNP-0.3 NA. Helicopter visibility reduction below ¼ SM NA.	MALSF 	MISSED APPROACH: Climb to 3000 direct STAEV and hold.
	-10°C		

ATIS 123.8 269.9	BURLINGTON APP CON * 121.1 278.8	BURLINGTON TOWER * 118.3 (CTAF) 0 257.8	BURLINGTON RADIO 122.6 255.4	GND CON 126.3 348.6	CLNC DEL 119.15
----------------------------	--	---	--	-------------------------------	---------------------------



ELEV 335	D	TDZE 335
----------	----------	----------



CATEGORY	A	B	C	D	E
LPV DA	535/40	200 (200-¾)	585/50	250 (300-1)	
LNAV/VNAV DA	1782-5 1447 (1500-5)				
LNAV MDA	2000/60 1665 (1700-1½)	2000-1½ 1665 (1700-1½)	2000-3	1665 (1700-3)	
CIRCLING	2000-1¼ 1665 (1700-1¼)	2000-1½ 1665 (1700-1½)	2000-3	1665 (1700-3)	

NE-1, 04 JAN 2018 to 01 FEB 2018

NE-1, 04 JAN 2018 to 01 FEB 2018