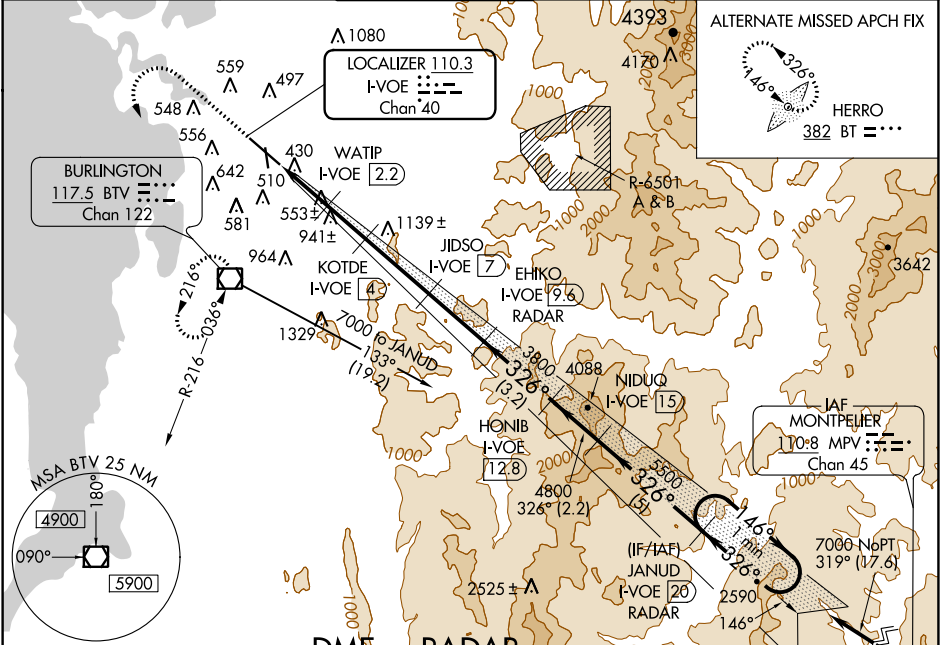


LOC/DME I-VOE 110.3 Chan 40	APP CRS 326°	Rwy Idg TDZE Apt Elev	7819 335 335
--	------------------------	-----------------------------	---

ILS or LOC/DME RWY 33

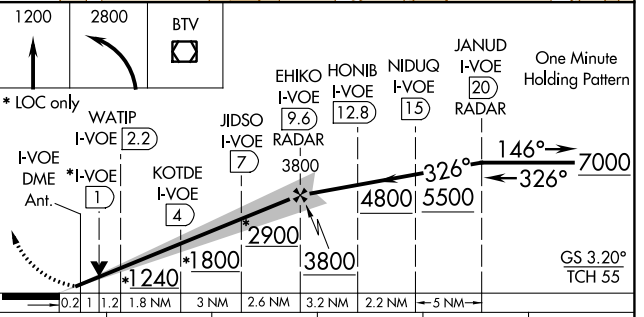
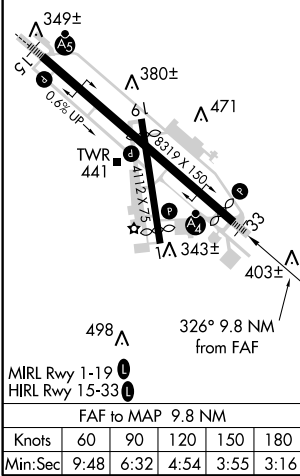
BURLINGTON INTL (BTV)

⚠ Circling to Rwy 1 NA at night. Inoperative table does not apply to S-LOC 33 Cats C, D, and E. Inoperative table does not apply to S-ILS all Cats. Autopilot coupled approaches NA.	MALSF ⚠	MISSED APPROACH: Climb to 1200 then climbing left turn to 2800 direct BTV VOR/DME and hold, continue climb-in-hold to 2800.
ATIS 123.8 269.9	BURLINGTON APP CON * 121.1 278.8	BURLINGTON TOWER * 118.3 (CTAF) 0 257.8
BURLINGTON RADIO 122.6 255.4	GND CON 126.3 348.6	CLNC DEL 119.15



ELEV 335	D	TDZE 335
----------	----------	----------

DME or RADAR REQUIRED



CATEGORY	A	B	C	D	E
S-ILS 33	535/40 200 (200-34)		585/50 250 (300-1)		NA
S-LOC 33	820/40 485 (500-34)		820/60 485 (500-1 1/4) 485 (500-1 1/2)	820-1 1/2	820-1 3/4 485 (500-1 3/4)
CIRCLING	840-1 505 (600-1)	860-1 525 (600-1)	860-1 1/2 525 (600-1 1/2)	1000-2 665 (700-2)	1280-3 945 (1000-3)

NE-1, 26 APR 2018 to 24 MAY 2018

NE-1, 26 APR 2018 to 24 MAY 2018