

|  |                        |  |
|--|------------------------|--|
| WAAS<br>CH <b>61220</b><br><b>W05A</b> | APP CRS<br><b>047°</b> | Rwy Idg <b>10004</b><br>TDZE <b>952</b><br>Apt Elev <b>952</b> |
|--|------------------------|--|

# RNAV (GPS) RWY 5L

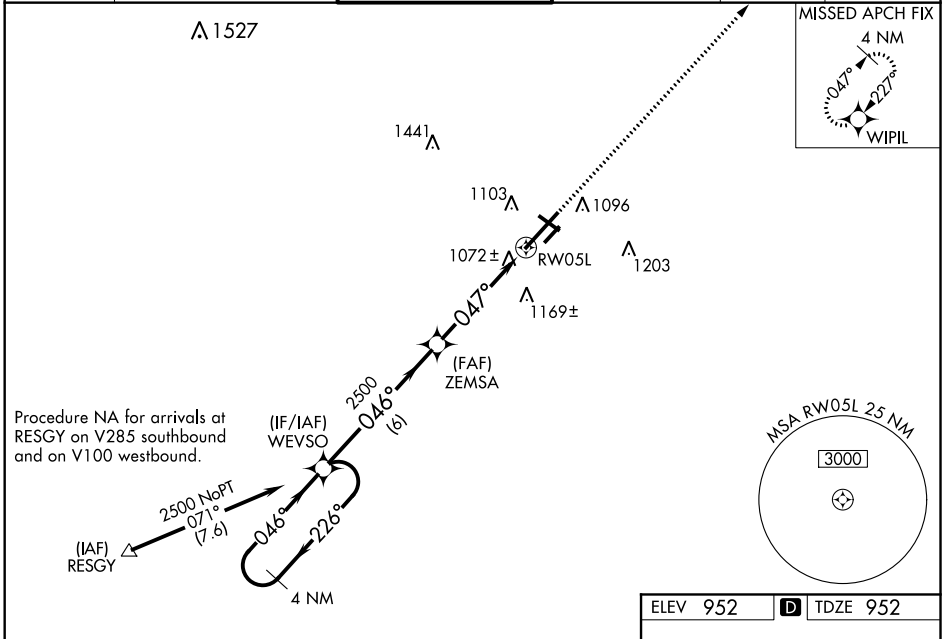
BATTLE CREEK EXECUTIVE AT KELLOGG FIELD (BTL)

RNP APCH:

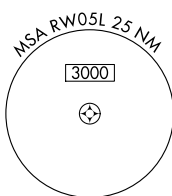
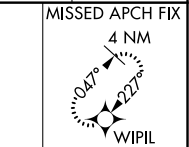
▼ For uncompensated Baro-VNAV systems, LNAV/VNAV NA below -16°C or above 37°C.  
 ▲ Rwy 5L helicopter visibility reduction below 3/4 SM NA. When local altimeter setting not received, use Grand Rapids altimeter setting: increase all DAs 106 feet and all visibilities 3/8 SM; increase all MDAs 120 feet and increase LNAV Cats C and D visibility 3/8 SM and Circling Cat C visibility 1/2 SM and Cat D visibility 1/4 SM. VDP and Baro-VNAV NA when using Grand Rapids altimeter setting. Circling Rwy 31 NA at night. Circling NA to Rwys 5R and 23L.

MISSED APPROACH:  
Climb to 2500 direct  
WIPIL and hold.

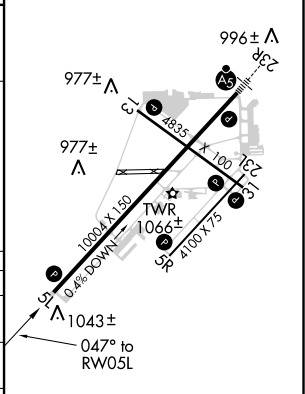
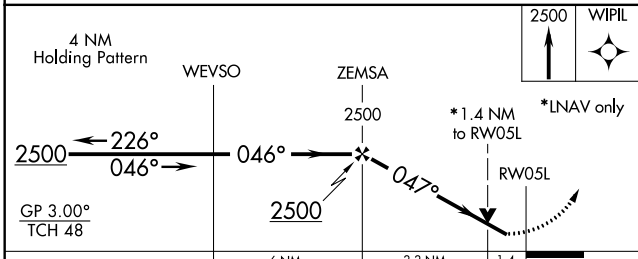
|                        |  |  |                         |                         |                                 |
|------------------------|--|--|-------------------------|-------------------------|---------------------------------|
| ATIS<br><b>128.325</b> | GREAT LAKES APP CON *<br><b>119.2 239.25</b> | BATTLE CREEK TOWER *<br><b>126.825</b> | GND CON<br><b>121.7</b> | UNICOM<br><b>122.95</b> | CTAF<br><b>126.825</b> <b>0</b> |
|------------------------|--|--|-------------------------|-------------------------|---------------------------------|



Procedure NA for arrivals at RESGY on V285 southbound and on V100 westbound.



|          |                   |
|----------|-------------------|
| ELEV 952 | <b>D</b> TDZE 952 |
|----------|-------------------|



| CATEGORY          | A                     | B                     | C                             | D                     |
|-------------------|-----------------------|-----------------------|-------------------------------|-----------------------|
| LPV DA            |                       | 1317-1 1/4            | 365 (400-1 1/4)               |                       |
| LNAV/VNAV DA      |                       | 1253-1                | 301 (400-1)                   |                       |
| LNAV MDA          | 1440-1                | 488 (500-1)           | 1440-1 3/8                    | 488 (500-1 3/8)       |
| <b>C</b> CIRCLING | 1440-1<br>488 (500-1) | 1480-1<br>528 (600-1) | 1520-1 1/2<br>568 (600-1 1/2) | 1520-2<br>568 (600-2) |

HIRL Rwy 5L-23R **0**  
 MRL Rwy 13-31 and 5R-23L **0**  
 REIL Rws 5L, 5R, 13, 23L and 31 **0**

# RNAV (GPS) RWY 5L

EC-1, 03 DEC 2020 to 31 DEC 2020

EC-1, 03 DEC 2020 to 31 DEC 2020