

LOC I-BTL <b>110.5</b>	APP CRS <b>227°</b>	Rwy Idg <b>10004</b> TDZE <b>929</b> Apt Elev <b>952</b>
---------------------------	------------------------	--

# ILS or LOC RWY 23R

BATTLE CREEK EXECUTIVE AT KELLOGG FIELD (BTL)

DME required, RADAR required for procedure entry.

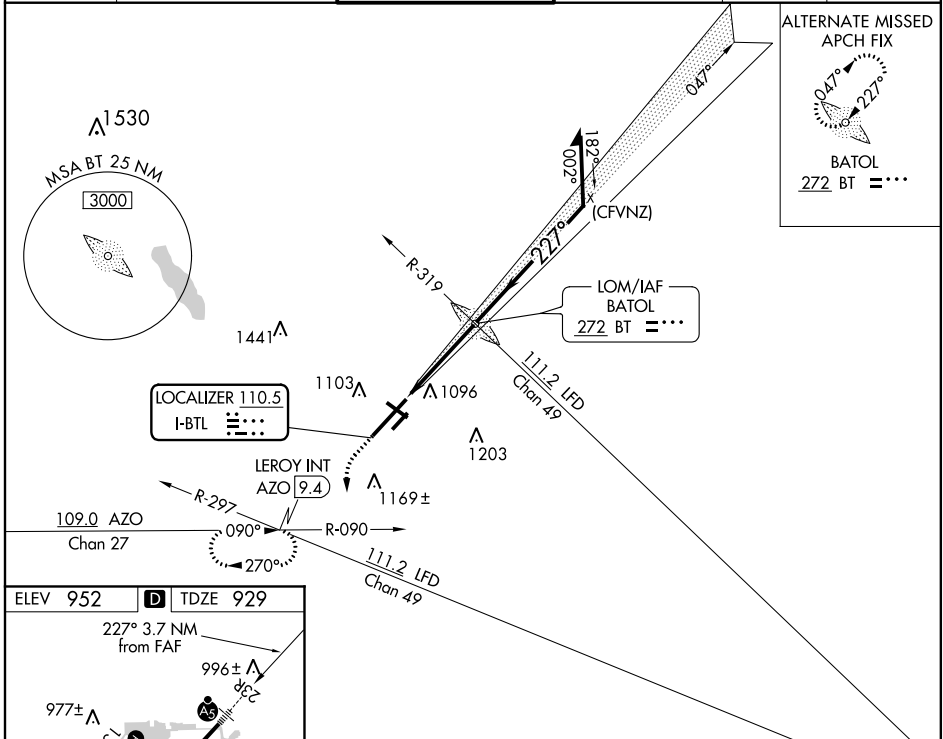
**⚠** Circling Rwy 5R, 23L NA. Circling Rwy 31 NA at night. When local altimeter setting not received, use Grand Rapids altimeter setting: increase DA to 1236 feet and increase all MDA 120 feet. Increase S-LOC 23R Cats C/D visibility to 1½ SM, Circling Cat C visibility to 2 SM and Cat D visibility to 2¼ SM. For inop ALS, increase S-LOC 23R Cat C/D visibility to 1¾ SM. For inop ALS when using Grand Rapids altimeter setting, increase S-ILS 23R all Cats visibility to RVR 5000. #RVR 1800 authorized with use of FD or AP or HUD to DA (NA when using Grand Rapids altimeter setting).

MALSR



MISSED APPROACH: Climb to 1500 then climbing left turn to 3000 on heading 215° and AZO VOR/DME R-090 to LEROY/AZO 9.4 DME and hold, continue climb-in-hold to 3000.

ATIS <b>128.325</b>	GREAT LAKES APP CON ★ <b>119.2 239.25</b>	BATTLE CREEK TOWER ★ <b>126.825</b>	GND CON <b>121.7</b>	UNICOM <b>122.95</b>	CTAF <b>126.825</b> <b>(1)</b>
------------------------	--	--	-------------------------	-------------------------	-----------------------------------

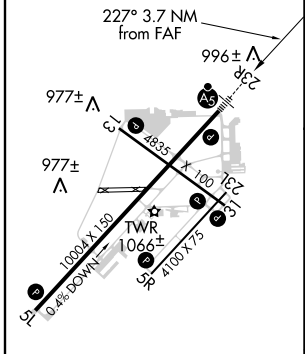


ALTERNATE MISSED APCH FIX

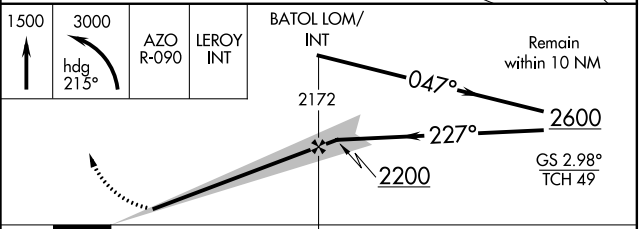


BATOL  
272 BT =\*\*\*

ELEV 952	<b>D</b>	TDZE 929
----------	----------	----------



HIRL Rwy 5L-23R <b>(1)</b>
MIRL Rwy 13-31 and 5R-23L <b>(1)</b>
REL Rwy 5L, 5R, 13, 23L and 31L <b>(1)</b>
FAF to MAP 3.7 NM
Knots 60 90 120 150 180
Min:Sec 3:42 2:28 1:51 1:29 1:14



CATEGORY	A	B	C	D
S-ILS 23R	# 1129/24 200 (200-½)			
S-LOC 23R	1400/24	471 (500-½)	1400/50	471 (500-1)
<b>C</b> CIRCLING	1420-1 468 (500-1)	1480-1 528 (600-1)	1520-1½ 568 (600-½)	1520-2 568 (600-2)

EC-1, 25 FEB 2021 to 25 MAR 2021

EC-1, 25 FEB 2021 to 25 MAR 2021