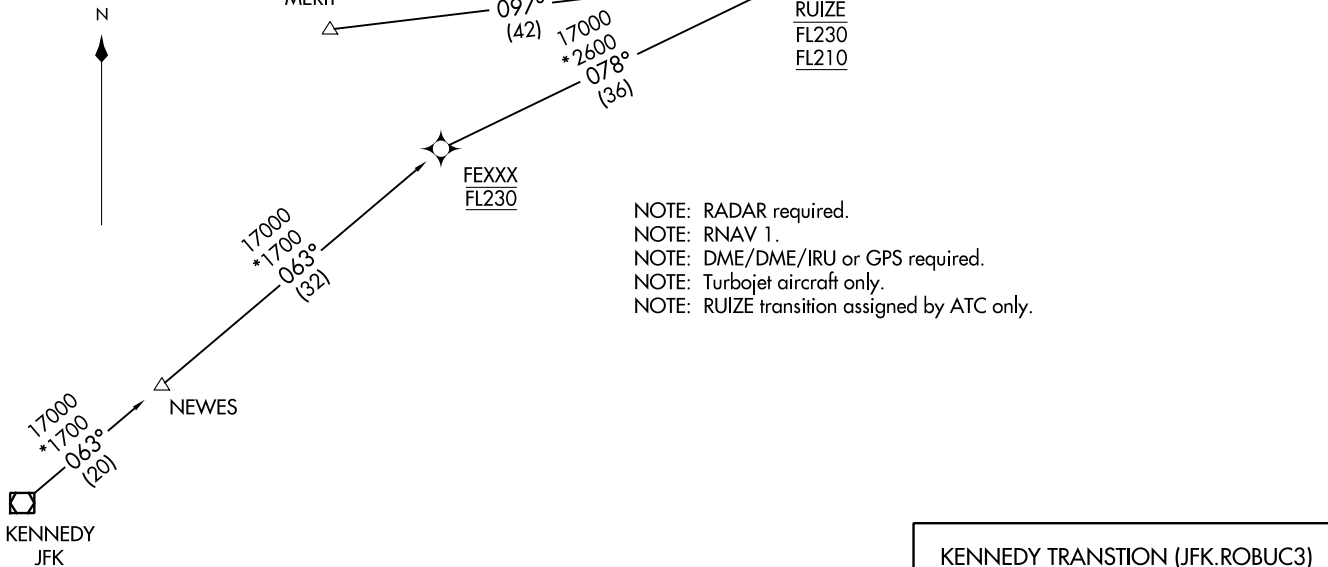


D-ATIS
135.0
BOSTON APP CON
120.6 263.1

ROBUC THREE ARRIVAL (RNAV) Transition Routes
(ROBUC.ROBUC3) 120CTT7

BOSTON, MASSACHUSETTS
GENERAL EDWARD LAWRENCE LOGAN INTL (BOS)



See following page for Arrival Routes.

- NOTE: RADAR required.
- NOTE: RNAV 1.
- NOTE: DME/DME/IRU or GPS required.
- NOTE: Turbojet aircraft only.
- NOTE: RUIZE transition assigned by ATC only.

KENNEDY TRANSITION (JFK.ROBUC3)
MERIT TRANSITION (MERIT.ROBUC3)
RUIZE TRANSITION (RUIZE.ROBUC3)

(CONTINUED ON FOLLOWING PAGE)

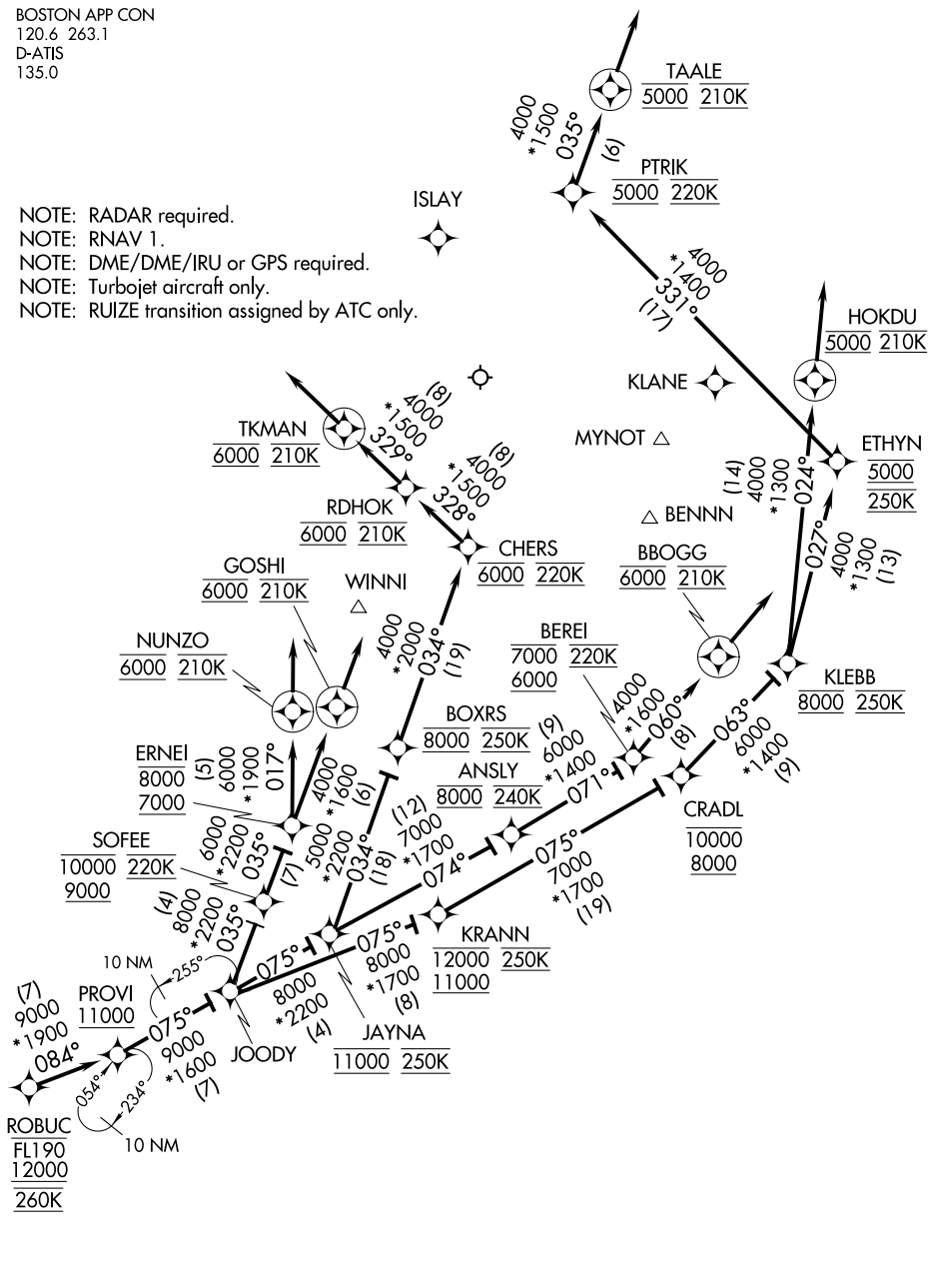
NOTE: Chart not to scale.

(ROBUC.ROBUC3) 17285
ROBUC THREE ARRIVAL (RNAV) Transition Routes
AL-58 (FAA)
GENERAL EDWARD LAWRENCE LOGAN INTL (BOS)
BOSTON, MASSACHUSETTS

ROBUC THREE ARRIVAL (RNAV) Arrival Routes

BOSTON APP CON
120.6 263.1
D-ATIS
135.0

- NOTE: RADAR required.
- NOTE: RNAV 1.
- NOTE: DME/DME/IRU or GPS required.
- NOTE: Turbojet aircraft only.
- NOTE: RUIZE transition assigned by ATC only.



NE-1, 05 DEC 2019 to 02 JAN 2020

NE-1, 05 DEC 2019 to 02 JAN 2020

NOTE: Chart not to scale.

(NARRATIVE ON FOLLOWING PAGE)

ROBUC THREE ARRIVAL (RNAV) Arrival Routes